

THE UNIVERSITY OF NORTH CAROLINA

FALL 2003 ENROLLMENT REPORT

November 13, 2003



The University of North Carolina Office of the President

The University of North Carolina

Fall 2003 Enrollment Report

Fall 2003 Headcount Enrollment¹

Headcount enrollment for fall 2003 reached a record high of 183,347 students. This is an increase of 6,380 students (or 3.6 percent) over the 176,967 who were enrolled last fall (Figure 1). This marks the third year in a row that the enrollment increase exceeded 6,000 students. The University exceeded the combined enrollment target of 5,700 new students set for the sixteen constituent institutions for fall 2003 by 680 students. Enrollment growth was strong at both the undergraduate and graduate levels; but while the target at the undergraduate level was exceeded by over 1,200 students the graduate results fell short of the target by 584 students.

All UNC institutions except the NCSA experienced growth this fall. Eight institutions (including six focused-growth institutions) equaled or exceeded the system average growth of 3.6 percent: WSSU (607) 17.4%; NCCU (672) 10.3%; NCA&TSU (915) 10.0%; WCU (528) 7.5%; ECSU (158) 7.3%; UNCP (290) 6.5%; ECU (1,179) 5.7%; and UNCC (689) 3.6% (Figure 2).

The headcount growth was most dramatic among six institutions, each with increases of 500 or more students: ECU (1,179), NCA&TSU (915), UNCC (689), NCCU (672), WSSU (607) and WCU (528).

¹ This report on fall enrollment includes on-campus and off-campus enrollments, a change first made in the fall 2000 report. All trend data in the attached tables have been revised to include off-campus enrollments.

Collectively, the seven focused-growth institutions accounted for slightly more than one-half of the 6,380 student increase. As a group, the focused-growth institutions grew by 8.4 percent, as compared to 2.3 percent among the non-focused-growth institutions and the 3.6 percent overall growth rate. Historically American Indian and Historically African American institutions grew at a faster pace (6.5 percent and 8.9 percent, respectively) than did historically white institutions (2.5 percent). Each of the focused-growth institutions experienced growth, and only FSU (0.4 percent) did not exceed the system percentage increase (Figure 3, Figure 4).

Increase in Enrollment, Diversity and SAT Scores

In addition to experiencing record enrollment growth, both diversity overall and freshmen SAT scores have increased in UNC institutions. The University is more diverse overall and eight institutions have increased diversity as defined for their campuses (ASU, ECU, NCA&TSU, NCSU, UNCA, UNC CH, UNCP, and UNCW). Eleven institutions saw the average SAT for first-time-in-college students increase (ECU, ECSU, NCSU, UNCA, UNC CH, UNCC, UNCG, UNCP, UNCW, WCU, and WSSU). The UNC average combined SAT increased from 1072 to 1075.

First-Time Students

The proportion of recent North Carolina high school graduates who entered a UNC institution this fall was 31.0 percent, up from 30.1 percent last fall (Figure 5). The total number of first-time freshmen increased by 6.0 percent, the number of undergraduate transfer students by 5.2 percent, and the number of new graduate and first professional students by 8.2 percent (Figure 6).

Minority Enrollment and Minority Presence

Minority enrollment (of those identified) increased by 3,422 students (7.1 percent) and is 29.2 percent of the University's enrollment adjusted for those whose race is not known, up from last year's 28.2 percent. In percentage terms, the growth for each identified minority group other than Hispanic students exceeded the growth rate for white students, which was 1.9 percent, or 2,282. The percentages were (Figure 7):

- African American students (up 7.3 percent, or 2,761 students)
- American Indian students (up 2.9 percent, or 58 students)
- Asian students (up 5.5 percent, or 297 students)
- Hispanic students (up 1.1 percent, or 34 students)

African American enrollment increased at both the historically black institutions (9.7 percent) and the historically white institutions (3.6 percent). White enrollment increased at both the historically black institutions (3.8 percent) and historically white institutions (1.7 percent). Taken together, these changes produced an enrollment at the historically white institutions that is 10.62 percent African American (up slightly every year since 1991), and an enrollment at the historically black institutions that is 13.56 percent white (down slightly from last year). In percentage terms, this is the sixth year in a row that African American students have exceeded 10 percent of the total enrollment at the historically white institutions. This means that 41.6 percent (16,904) of UNC's African American students now enroll at historically white or historically American Indian institutions. By contrast, 5.2 percent (6,457) of UNC's white students enroll at historically African American or American Indian institutions.

Distance Education

The number of students enrolled in off-campus distance education classes this fall and not taking classes on campus was 9,884, an increase of 1,411 (16.7 percent). An additional 4,545 students enrolled in distance education courses while taking courses on-campus, for a total of 14,429 students enrolled in such courses. This suggests that growing numbers of regular session students are choosing to take distance-learning classes, generally through the use of information technology. As might be expected, distance education courses are especially convenient for nontraditional students (age 25 and older), who constitute 73.9 percent of off-campus enrollment.

Origin of First-Time-in-College Freshmen

Of new freshmen, 85.3 percent were from North Carolina, and 14.7 percent were from out of state. Only one institution, UNCA, exceeded the Board of Governors' 18 percent out-of-state rule; however, it was not for two consecutive years. (The North Carolina School of the Arts is excluded from this rule.) NCA&TSU has a calculated rate of 17.8 percent of out-of-state students; the Board of Governors approved an exemption that removes new freshmen out-of-state engineering students from their calculation. For fall 2003 there were 176 out-of-state new freshmen engineering students at NCA&TSU.

**University of North Carolina Fall Headcount Enrollment
by Institution and Race, 1972, 1983 - 2003**

Institution	Year	Black	White	Am. Indian	Asian	His- panic	Other/ Unknown	Total	% Minority
Historically Black Institutions									
Elizabeth City	1972	1,038	71	0	0	0	0	1,109	6.40%
	1983	1,219	243	5	3	2	14	1,486	16.35%
	1984	1,287	247	4	3	3	13	1,557	15.86%
	1985	1,262	256	1	2	1	11	1,533	16.70%
	1986	1,321	281	1	1	1	8	1,613	17.42%
	1987	1,266	301	1	2	5	8	1,583	19.01%
	1988	1,338	289	1	2	4	7	1,641	17.61%
	1989	1,329	353	0	4	3	5	1,694	20.84%
	1990	1,314	412	2	5	4	9	1,746	23.60%
	1991	1,327	419	4	7	10	6	1,773	23.63%
	1992	1,489	495	4	11	8	12	2,019	24.52%
	1993	1,555	538	6	11	7	13	2,130	25.26%
	1994	1,555	519	3	14	2	6	2,099	24.73%
	1995	1,484	469	4	15	4	5	1,981	23.67%
	1996	1,435	466	5	16	6	3	1,931	24.13%
	1997	1,447	457	3	19	7	4	1,937	23.59%
	1998	1,453	443	3	20	9	4	1,932	22.93%
	1999	1,482	449	1	20	8	6	1,966	22.84%
	2000	1,558	440	6	13	11	7	2,035	21.62%
	2001	1,558	412	6	8	12	8	2,004	20.56%
	2002	1,638	477	6	8	13	8	2,150	22.19%
	2003	1,774	499	5	13	12	5	2,308	21.62%
Fayetteville	1972	1,588	49	6	0	0	0	1,643	2.98%
	1983	2,079	498	17	18	27	27	2,666	18.68%
	1984	1,992	600	19	11	34	23	2,679	22.40%
	1985	2,236	655	12	12	31	11	2,957	22.15%
	1986	2,171	679	20	18	26	7	2,921	23.25%
	1987	1,935	644	16	15	26	3	2,639	24.40%
	1988	1,908	738	22	22	34	2	2,726	27.07%
	1989	2,067	881	21	25	39	1	3,034	29.04%
	1990	2,202	1,019	32	34	49	1	3,337	30.54%
	1991	2,357	1,228	41	38	71	1	3,736	32.87%
	1992	2,444	1,274	49	47	88	0	3,902	32.65%
	1993	2,523	1,320	41	51	95	2	4,032	32.74%
	1994	2,632	1,261	51	57	105	3	4,109	30.69%
	1995	2,610	1,165	58	53	120	3	4,009	29.06%
	1996	2,929	1,335	56	98	184	7	4,609	28.97%
	1997	3,024	1,228	61	92	202	7	4,614	26.61%
	1998	3,041	1,029	55	78	160	10	4,373	23.53%
	1999	3,487	1,071	54	80	168	19	4,879	21.95%
	2000	3,239	933	46	78	170	21	4,487	20.79%
	2001	3,631	1,047	60	56	195	21	5,010	20.90%
	2002	3,910	1,064	58	67	179	30	5,308	20.05%
	2003	4,010	967	61	60	209	22	5,329	18.15%
N.C. A and T	1972	4,290	219	1	0	0	0	4,510	4.86%
	1983	4,668	520	6	9	5	434	5,642	9.22%
	1984	4,471	579	11	21	7	337	5,426	10.67%
	1985	4,728	658	16	16	7	287	5,712	11.52%
	1986	4,978	705	25	18	7	233	5,966	11.82%
	1987	5,119	718	16	23	8	179	6,063	11.84%
	1988	5,276	805	15	25	10	166	6,297	12.78%
	1989	5,583	869	14	31	10	151	6,658	13.05%
	1990	5,583	838	12	41	12	109	6,595	12.71%
	1991	6,112	898	19	77	22	71	7,199	12.47%
	1992	6,534	994	19	94	18	64	7,723	12.87%
	1993	6,851	940	15	91	28	88	8,013	11.73%
	1994	7,047	853	19	96	14	107	8,136	10.48%
	1995	6,876	828	23	72	27	121	7,947	10.42%
	1996	6,676	770	27	80	26	94	7,673	10.04%
	1997	6,657	684	30	110	32	72	7,585	9.02%
	1998	6,580	621	24	75	33	132	7,465	8.32%
	1999	6,693	652	22	69	30	137	7,603	8.58%
	2000	6,873	597	22	70	26	160	7,748	7.71%
	2001	7,375	572	26	83	40	223	8,319	6.88%
	2002	7,980	691	32	116	54	242	9,115	7.58%
	2003	8,796	769	38	121	55	251	10,030	7.67%

**University of North Carolina Fall Headcount Enrollment
by Institution and Race, 1972, 1983 - 2003**

Institution	Year	Black	White	Am. Indian	Asian	Hispanic	Other/Unknown	Total	% Minority % White
N.C. Central	1972	3,521	231	5	3	0	0	3,760	6.14%
	1983	4,464	647	13	16	9	79	5,228	12.38%
	1984	3,773	671	5	22	12	69	4,552	14.74%
	1985	3,932	713	17	25	10	50	4,747	15.02%
	1986	4,096	834	16	28	9	57	5,040	16.55%
	1987	4,233	780	13	47	12	15	5,100	15.29%
	1988	4,280	805	20	42	24	11	5,182	15.53%
	1989	4,444	811	14	30	19	25	5,343	15.18%
	1990	4,564	829	15	32	8	34	5,482	15.12%
	1991	4,487	801	19	25	12	41	5,385	14.87%
	1992	4,749	818	22	25	11	56	5,681	14.40%
	1993	4,738	785	20	25	17	60	5,645	13.91%
	1994	4,779	796	21	21	20	55	5,692	13.98%
	1995	4,602	831	25	33	25	39	5,555	14.96%
	1996	4,563	848	26	34	32	54	5,557	15.26%
	1997	4,837	891	35	40	33	69	5,905	15.09%
	1998	4,681	831	30	43	44	114	5,743	14.47%
	1999	4,552	787	39	43	40	134	5,595	14.07%
	2000	4,453	758	35	41	33	156	5,476	13.84%
	2001	4,674	792	35	54	39	159	5,753	13.77%
2002	5,218	960	44	68	49	180	6,519	14.73%	
2003	5,762	1,024	41	78	74	212	7,191	14.24%	
Winston-Salem	1972	1,654	66	0	0	0	0	1,720	3.84%
	1983	2,025	339	2	8	2	1	2,377	14.26%
	1984	2,083	343	2	9	4	2	2,443	14.04%
	1985	2,075	338	1	6	4	1	2,425	13.94%
	1986	2,187	388	7	5	2	1	2,590	14.98%
	1987	2,123	411	6	13	4	1	2,558	16.07%
	1988	2,143	372	6	8	3	0	2,532	14.69%
	1989	2,170	386	5	12	3	0	2,576	14.98%
	1990	2,066	431	6	11	3	0	2,517	17.12%
	1991	2,107	500	5	17	6	2	2,637	18.96%
	1992	2,124	574	2	18	8	2	2,728	21.04%
	1993	2,202	667	3	20	13	4	2,909	22.93%
	1994	2,227	653	2	19	12	2	2,915	22.40%
	1995	2,181	660	4	23	13	9	2,890	22.84%
	1996	2,201	632	5	22	20	9	2,889	21.88%
	1997	2,300	602	6	24	17	8	2,957	20.36%
1998	2,299	534	6	25	21	4	2,889	18.48%	
1999	2,277	462	5	25	18	1	2,788	16.57%	
2000	2,356	454	2	23	21	1	2,857	15.89%	
2001	2,465	474	5	29	18	1	2,992	15.84%	
2002	2,844	593	5	22	29	2	3,495	16.97%	
2003	3,351	668	6	24	33	20	4,102	16.28%	
HBI TOTAL	1972	12,091	636	12	3	0	0	12,742	4.99%
	1983	14,455	2,247	43	54	45	555	17,399	12.91%
	1984	13,606	2,440	41	66	60	444	16,657	14.65%
	1985	14,233	2,620	47	61	53	360	17,374	15.08%
	1986	14,753	2,887	69	70	45	306	18,130	15.92%
	1987	14,676	2,854	52	100	55	206	17,943	15.91%
	1988	14,945	3,009	64	99	75	186	18,378	16.37%
	1989	15,593	3,300	54	102	74	182	19,305	17.09%
	1990	15,729	3,529	67	123	76	153	19,677	17.93%
	1991	16,390	3,846	88	164	121	121	20,730	18.55%
	1992	17,340	4,155	96	195	133	134	22,053	18.84%
	1993	17,869	4,250	85	198	160	167	22,729	18.70%
	1994	18,240	4,082	96	207	153	173	22,951	17.79%
	1995	17,753	3,953	114	196	189	177	22,382	17.66%
	1996	17,804	4,051	119	250	268	167	22,659	17.88%
	1997	18,265	3,862	135	285	291	160	22,998	16.79%
	1998	18,054	3,458	118	241	267	264	22,402	15.44%
	1999	18,491	3,421	121	237	264	297	22,831	14.98%
	2000	18,479	3,182	111	225	261	345	22,603	14.08%
2001	19,703	3,297	132	230	304	412	24,078	13.69%	
2002	21,590	3,785	145	281	324	462	26,587	14.24%	
2003	23,693	3,927	151	296	383	510	28,960	13.56%	

**University of North Carolina Fall Headcount Enrollment
by Institution and Race, 1972, 1983 - 2003**

Institution	Year	Black	White	Am. Indian	Asian	Hispanic	Other/Unknown	Total	% Minority	% Black	% Am.Ind.
Historically American Indian Institution											
UNC-Pembroke	1972	55	1,611	304	0	0	0	1,970	2.79%		15.43%
	1983	268	1,280	528	9	13	24	2,122	12.63%		24.88%
	1984	315	1,305	541	10	11	15	2,197	14.34%		24.62%
	1985	323	1,393	591	9	14	9	2,339	13.81%		25.27%
	1986	330	1,506	605	18	15	7	2,481	13.30%		24.39%
	1987	330	1,660	609	21	15	10	2,645	12.48%		23.02%
	1988	342	1,791	662	27	9	4	2,835	12.06%		23.35%
	1989	356	1,927	750	22	16	10	3,081	11.55%		24.34%
	1990	347	1,987	747	25	15	12	3,133	11.08%		23.84%
	1991	320	1,878	691	23	14	18	2,944	10.87%		23.47%
	1992	336	1,927	721	20	18	19	3,041	11.05%		23.71%
	1993	367	1,910	715	18	25	10	3,045	12.05%		23.48%
	1994	388	1,839	723	24	35	8	3,017	12.86%		23.96%
	1995	407	1,811	731	18	29	4	3,000	13.57%		24.37%
	1996	435	1,859	744	17	36	4	3,095	14.05%		24.04%
	1997	467	1,814	757	41	54	9	3,142	14.86%		24.09%
	1998	481	1,788	708	40	60	9	3,086	15.59%		22.94%
	1999	520	1,736	686	43	59	18	3,062	16.98%		22.40%
	2000	632	1,905	757	60	69	22	3,445	18.35%		21.97%
	2001	767	2,159	852	51	80	24	3,933	19.50%		21.66%
	2002	913	2,405	941	59	83	31	4,432	20.60%		21.23%
	2003	1,015	2,530	958	76	102	41	4,722	21.50%		20.29%
Historically White Institutions											
Appalachian	1972	101	7,195	33	13	11	0	7,353	1.37%		
	1983	399	9,684	15	18	39	39	10,194	3.91%		
	1984	458	9,429	30	19	47	46	10,029	4.57%		
	1985	461	9,601	23	24	37	45	10,191	4.52%		
	1986	477	10,354	20	25	33	54	10,963	4.35%		
	1987	530	10,973	18	39	37	32	11,629	4.56%		
	1988	525	10,883	21	46	39	34	11,548	4.55%		
	1989	519	11,290	25	62	49	35	11,980	4.33%		
	1990	524	11,227	18	57	56	49	11,931	4.39%		
	1991	484	11,094	27	55	65	48	11,773	4.11%		
	1992	487	11,359	31	66	74	48	12,065	4.04%		
	1993	490	11,415	33	68	73	65	12,144	4.03%		
	1994	442	11,525	30	85	79	75	12,236	3.61%		
	1995	410	11,770	33	99	84	61	12,457	3.29%		
	1996	359	11,711	39	94	93	56	12,352	2.91%		
	1997	350	11,936	45	119	90	71	12,611	2.78%		
	1998	381	12,134	45	115	104	55	12,834	2.97%		
	1999	388	12,053	44	121	105	69	12,780	3.04%		
	2000	405	12,448	49	123	126	76	13,227	3.06%		
	2001	450	12,977	47	126	113	49	13,762	3.27%		
	2002	484	13,058	45	148	145	298	14,178	3.41%		
	2003	503	13,124	53	159	161	343	14,343	3.51%		
East Carolina	1972	333	10,354	78	17	76	0	10,858	3.07%		
	1983	1,633	12,395	87	117	89	117	14,438	11.31%		
	1984	1,702	13,016	90	93	86	153	15,140	11.24%		
	1985	1,802	13,066	85	87	77	150	15,267	11.80%		
	1986	1,722	13,199	88	94	76	105	15,284	11.27%		
	1987	1,744	13,817	72	101	75	92	15,901	10.97%		
	1988	1,721	14,396	83	119	91	91	16,501	10.43%		
	1989	1,649	14,885	84	147	99	90	16,954	9.73%		
	1990	1,594	15,486	91	185	106	102	17,564	9.08%		
	1991	1,661	15,739	86	195	119	126	17,926	9.27%		
	1992	1,847	16,845	89	205	130	148	19,264	9.59%		
	1993	1,762	15,804	82	214	156	168	18,186	9.69%		
	1994	1,824	15,605	91	219	153	184	18,076	10.09%		
	1995	1,837	15,399	116	248	172	151	17,923	10.25%		
	1996	1,893	14,966	107	258	207	152	17,583	10.77%		
	1997	2,137	15,284	119	310	237	184	18,271	11.70%		
	1998	2,245	15,004	128	321	238	327	18,263	12.29%		
	1999	2,406	15,222	128	345	266	444	18,811	12.79%		
	2000	2,489	15,028	137	352	280	464	18,750	13.27%		
	2001	2,722	15,397	152	370	293	478	19,412	14.02%		
	2002	2,832	16,369	156	426	299	495	20,577	13.76%		
	2003	3,072	17,230	157	470	334	493	21,756	14.12%		

**University of North Carolina Fall Headcount Enrollment
by Institution and Race, 1972, 1983 - 2003**

Institution	Year	Black	White	Am. Indian	Asian	Hispanic	Other/Unknown	Total	% Minority % Black
N.C. School of the Arts	1972	29	319	0	1	2	0	351	8.26%
	1983	47	462	1	4	6	15	535	8.79%
	1984	62	425	0	4	4	10	505	12.28%
	1985	59	399	3	7	8	13	489	12.07%
	1986	53	389	3	5	11	7	468	11.32%
	1987	56	400	4	6	13	7	486	11.52%
	1988	57	426	1	1	15	15	515	11.07%
	1989	41	424	2	8	13	19	507	8.09%
	1990	42	395	4	9	12	24	486	8.64%
	1991	35	423	1	8	12	29	508	6.89%
	1992	30	432	3	10	10	25	510	5.88%
	1993	38	520	2	8	15	27	610	6.23%
	1994	44	539	3	12	15	31	644	6.83%
	1995	48	576	2	9	17	27	679	7.07%
	1996	57	606	2	13	24	30	732	7.79%
	1997	53	631	3	18	23	43	771	6.87%
	1998	57	637	5	16	21	36	772	7.38%
	1999	59	664	3	17	16	35	794	7.43%
	2000	59	642	5	16	14	32	768	7.68%
	2001	77	654	3	16	13	26	789	9.76%
2002	78	677	1	22	17	22	817	9.55%	
2003	66	650	2	24	26	24	792	8.33%	
N.C. State	1972	222	13,505	21	32	29	0	13,809	1.61%
	1983	1,822	19,597	60	377	149	830	22,835	7.98%
	1984	1,925	20,251	72	471	175	839	23,733	8.11%
	1985	2,138	20,509	72	521	176	878	24,294	8.80%
	1986	2,332	20,648	63	559	175	1,110	24,887	9.37%
	1987	2,214	20,278	69	540	199	1,049	24,349	9.09%
	1988	2,400	21,376	70	629	201	1,049	25,725	9.33%
	1989	2,396	22,379	79	704	225	1,087	26,870	8.92%
	1990	2,365	22,662	89	757	214	1,112	27,199	8.70%
	1991	2,410	23,024	115	823	261	1,158	27,791	8.67%
	1992	2,492	22,784	124	855	301	1,210	27,766	8.98%
	1993	2,529	22,756	139	948	301	1,137	27,810	9.09%
	1994	2,581	22,957	141	1,100	320	1,124	28,223	9.15%
	1995	2,660	22,841	173	1,164	350	1,062	28,250	9.42%
	1996	2,613	22,496	164	1,241	378	1,102	27,994	9.33%
	1997	2,696	22,555	174	1,269	408	1,179	28,281	9.53%
1998	2,719	22,159	176	1,331	428	1,147	27,960	9.72%	
1999	2,759	21,968	183	1,329	467	1,305	28,011	9.85%	
2000	2,823	22,196	193	1,358	508	1,541	28,619	9.86%	
2001	2,853	22,409	190	1,452	560	1,822	29,286	9.74%	
2002	2,864	22,829	195	1,551	554	1,644	29,637	9.66%	
2003	2,920	23,064	188	1,603	587	1,492	29,854	9.78%	
UNC-Asheville	1972	27	937	2	1	1	0	968	2.79%
	1983	118	2,472	4	14	20	20	2,648	4.46%
	1984	128	2,464	3	17	17	22	2,651	4.83%
	1985	112	2,518	8	13	15	20	2,686	4.17%
	1986	114	2,729	7	16	16	18	2,900	3.93%
	1987	120	2,842	6	17	18	27	3,030	3.96%
	1988	110	2,943	4	19	24	24	3,124	3.52%
	1989	118	3,074	7	20	21	25	3,265	3.61%
	1990	126	3,059	12	25	24	25	3,271	3.85%
	1991	97	3,040	10	23	28	27	3,225	3.01%
	1992	113	3,030	12	31	28	26	3,240	3.49%
	1993	118	2,898	11	35	32	36	3,130	3.77%
	1994	117	2,922	15	41	28	42	3,165	3.70%
	1995	136	2,955	14	42	34	41	3,222	4.22%
	1996	117	2,833	17	38	40	47	3,092	3.78%
	1997	108	2,927	14	32	42	56	3,179	3.40%
	1998	108	2,913	12	34	43	65	3,175	3.40%
	1999	112	2,934	14	35	44	87	3,226	3.47%
2000	119	2,984	17	37	43	92	3,292	3.61%	
2001	97	2,984	17	43	45	107	3,293	2.95%	
2002	93	3,073	19	49	47	110	3,391	2.74%	
2003	95	3,102	14	55	53	127	3,446	2.76%	

**University of North Carolina Fall Headcount Enrollment
by Institution and Race, 1972, 1983 - 2003**

Institution	Year	Black	White	Am. Indian	Asian	Hispanic	Other/Unknown	Total	% Minority % Black
UNC-Chapel Hill	1972	842	18,247	40	44	51	0	19,224	4.38%
	1983	1,890	19,049	138	224	147	364	21,812	8.66%
	1984	1,798	18,920	132	243	156	403	21,652	8.30%
	1985	1,748	19,284	128	297	162	447	22,066	7.92%
	1986	1,786	19,869	121	345	161	544	22,826	7.82%
	1987	1,732	19,984	129	386	159	568	22,958	7.54%
	1988	1,844	20,398	132	443	173	636	23,626	7.80%
	1989	1,922	20,175	132	521	176	693	23,619	8.14%
	1990	2,065	20,111	142	632	201	727	23,878	8.65%
	1991	2,027	19,941	145	705	231	784	23,833	8.51%
	1992	2,080	19,842	146	813	265	831	23,977	8.67%
	1993	2,082	20,041	148	948	290	825	24,334	8.56%
	1994	2,177	20,115	141	1,040	322	770	24,565	8.86%
	1995	2,254	19,811	155	1,109	343	767	24,439	9.22%
	1996	2,310	19,360	147	1,149	350	807	24,123	9.58%
	1997	2,372	19,508	160	1,178	335	815	24,368	9.73%
	1998	2,399	19,337	155	1,170	340	854	24,255	9.89%
	1999	2,424	19,527	164	1,228	350	960	24,653	9.83%
	2000	2,404	19,559	170	1,287	399	1,073	24,892	9.66%
	2001	2,493	19,746	193	1,341	476	1,245	25,494	9.78%
2002	2,574	19,779	204	1,426	511	1,534	26,028	9.89%	
2003	2,658	19,635	204	1,495	592	1,775	26,359	10.08%	
UNC-Charlotte	1972	191	4,913	28	11	16	0	5,159	3.70%
	1983	910	9,149	24	139	86	398	10,706	8.50%
	1984	929	9,195	29	182	80	415	10,830	8.58%
	1985	984	9,564	32	192	83	368	11,223	8.77%
	1986	1,150	10,200	33	212	89	425	12,109	9.50%
	1987	1,148	10,497	34	230	86	390	12,385	9.27%
	1988	1,272	11,194	42	252	97	324	13,181	9.65%
	1989	1,465	11,233	62	250	105	336	13,451	10.89%
	1990	1,637	12,221	87	315	110	323	14,693	11.14%
	1991	1,724	12,864	97	371	122	406	15,584	11.06%
	1992	1,834	12,759	112	412	136	528	15,781	11.62%
	1993	2,056	12,628	104	448	161	545	15,942	12.90%
	1994	2,170	12,216	118	495	172	477	15,648	13.87%
	1995	2,295	12,468	101	524	186	495	16,069	14.28%
	1996	2,341	12,134	100	523	195	538	15,831	14.79%
1997	2,623	12,470	85	589	245	499	16,511	15.89%	
1998	2,825	12,547	83	676	273	457	16,861	16.75%	
1999	2,868	12,451	75	735	292	529	16,950	16.92%	
2000	2,834	12,596	66	780	284	681	17,241	16.44%	
2001	2,941	13,369	77	838	326	757	18,308	16.06%	
2002	2,966	13,873	75	889	385	728	18,916	15.68%	
2003	3,008	14,444	81	921	430	721	19,605	15.34%	
UNC-Greensboro	1972	327	6,822	125	21	133	0	7,428	4.40%
	1983	1,015	8,857	32	75	36	149	10,164	9.99%
	1984	1,022	8,970	31	74	43	153	10,293	9.93%
	1985	1,017	9,024	40	69	50	175	10,375	9.80%
	1986	1,066	9,271	42	87	46	184	10,696	9.97%
	1987	1,048	9,567	34	86	69	165	10,969	9.55%
	1988	1,118	9,984	36	106	72	161	11,477	9.74%
	1989	1,211	10,521	38	103	72	143	12,088	10.02%
	1990	1,358	11,131	37	109	87	160	12,882	10.54%
	1991	1,266	10,870	41	127	108	174	12,586	10.06%
	1992	1,446	11,233	48	177	123	204	13,231	10.93%
	1993	1,433	10,882	31	201	124	252	12,923	11.09%
	1994	1,538	10,496	44	206	125	249	12,658	12.15%
	1995	1,770	10,926	41	258	133	289	13,417	13.19%
	1996	1,751	10,642	54	251	132	298	13,128	13.34%
	1997	1,785	10,044	54	228	148	276	12,535	14.24%
	1998	1,988	10,187	56	262	162	340	12,995	15.30%
	1999	2,129	10,189	52	293	171	488	13,322	15.98%
	2000	2,213	9,887	58	301	189	477	13,125	16.86%
	2001	2,420	10,188	54	328	215	570	13,775	17.57%
2002	2,586	10,564	55	352	244	652	14,453	17.89%	
2003	2,655	10,490	49	382	247	1,047	14,870	17.85%	

**University of North Carolina Fall Headcount Enrollment
by Institution and Race, 1972, 1983 - 2003**

Institution	Year	Black	White	Am. Indian	Asian	Hispanic	Other/Unknown	Total	% Minority % Black
UNC-Wilmington	1972	76	2,156	0	1	0	0	2,233	3.40%
	1983	431	5,225	14	30	30	20	5,750	7.50%
	1984	410	5,351	13	33	28	22	5,857	7.00%
	1985	430	5,629	24	38	29	23	6,173	6.97%
	1986	407	5,745	19	39	26	18	6,254	6.51%
	1987	490	6,246	17	46	26	12	6,837	7.17%
	1988	510	6,333	20	57	22	11	6,953	7.33%
	1989	538	6,869	19	52	31	16	7,525	7.15%
	1990	539	6,885	29	61	36	17	7,567	7.12%
	1991	599	8,121	28	66	55	32	8,901	6.73%
	1992	615	7,975	37	73	67	37	8,804	6.99%
	1993	524	7,451	32	76	75	41	8,199	6.39%
	1994	509	7,697	38	78	95	55	8,472	6.01%
	1995	533	7,858	39	93	96	66	8,685	6.14%
	1996	559	8,307	47	94	95	74	9,176	6.09%
	1997	581	8,418	55	95	109	79	9,337	6.22%
	1998	549	8,880	67	113	131	81	9,821	5.59%
	1999	527	9,022	74	123	137	84	9,967	5.29%
	2000	519	9,169	62	119	144	87	10,100	5.14%
	2001	508	9,850	57	133	146	105	10,799	4.70%
2002	500	9,919	63	153	170	113	10,918	4.58%	
2003	537	9,957	92	169	183	141	11,079	4.85%	
Western Carolina	1972	146	5,799	15	8	4	0	5,972	2.44%
	1983	323	5,690	106	24	17	148	6,308	5.12%
	1984	345	5,813	88	28	25	86	6,385	5.40%
	1985	341	5,564	106	38	25	180	6,254	5.45%
	1986	313	5,562	96	33	18	124	6,146	5.09%
	1987	292	5,565	82	29	12	69	6,049	4.83%
	1988	287	5,654	91	29	13	88	6,162	4.66%
	1989	240	5,812	79	38	16	87	6,272	3.83%
	1990	276	5,893	93	46	16	87	6,411	4.31%
	1991	264	6,011	111	53	18	62	6,519	4.05%
	1992	291	6,293	97	47	21	88	6,837	4.26%
	1993	293	6,018	100	53	33	100	6,597	4.44%
	1994	291	6,253	102	47	42	55	6,790	4.29%
	1995	370	6,185	96	42	63	135	6,891	5.37%
	1996	312	6,113	100	49	58	143	6,775	4.61%
1997	346	6,122	106	60	63	339	7,036	4.92%	
1998	309	5,840	108	53	41	183	6,534	4.73%	
1999	297	5,908	114	48	47	166	6,580	4.51%	
2000	324	5,929	122	52	60	212	6,699	4.84%	
2001	327	5,999	108	45	58	326	6,863	4.76%	
2002	356	6,162	106	48	65	296	7,033	5.06%	
2003	375	6,622	114	51	67	332	7,561	4.96%	
HWI TOTAL	1972	2,294	70,247	342	149	323	0	73,355	3.13%
	1983	8,588	92,580	481	1,022	619	2,100	105,390	8.15%
	1984	8,779	93,834	488	1,164	661	2,149	107,075	8.20%
	1985	9,092	95,158	521	1,286	662	2,299	109,018	8.34%
	1986	9,420	97,966	492	1,415	651	2,589	112,533	8.37%
	1987	9,374	100,169	465	1,480	694	2,411	114,593	8.18%
	1988	9,844	103,587	500	1,701	747	2,433	118,812	8.29%
	1989	10,099	106,662	527	1,905	807	2,531	122,531	8.24%
	1990	10,526	109,070	602	2,196	862	2,626	125,882	8.36%
	1991	10,567	111,127	661	2,426	1,019	2,846	128,646	8.21%
	1992	11,235	112,552	699	2,689	1,155	3,145	131,475	8.55%
	1993	11,325	110,413	682	2,999	1,260	3,196	129,875	8.72%
	1994	11,693	110,325	723	3,323	1,351	3,062	130,477	8.96%
	1995	12,313	110,789	770	3,588	1,478	3,094	132,032	9.33%
	1996	12,312	109,168	777	3,710	1,572	3,247	130,786	9.41%
	1997	13,051	109,895	815	3,898	1,700	3,541	132,900	9.82%
	1998	13,580	109,638	835	4,091	1,781	3,545	133,470	10.17%
	1999	13,969	109,938	851	4,274	1,895	4,167	135,094	10.34%
	2000	14,189	110,438	879	4,425	2,047	4,735	136,713	10.38%
	2001	14,888	113,573	898	4,692	2,245	5,485	141,781	10.50%
2002	15,333	116,303	919	5,064	2,437	5,892	145,948	10.51%	
2003	15,889	118,318	954	5,329	2,680	6,495	149,665	10.62%	

**University of North Carolina Fall Headcount Enrollment
by Institution and Race, 1972, 1983 - 2003**

Institution	Year	Black	White	Am. Indian	Asian	His- panic	Other/ Unknown	Total	% Minority
UNC TOTAL	1972	14,440	72,494	658	152	323	0	88,067	
	1983	23,311	96,107	1,052	1,085	677	2,679	124,911	
	1984	22,700	97,579	1,070	1,240	732	2,608	125,929	
	1985	23,648	99,171	1,159	1,356	729	2,668	128,731	
	1986	24,503	102,359	1,166	1,503	711	2,902	133,144	
	1987	24,380	104,683	1,126	1,601	764	2,627	135,181	
	1988	25,131	108,387	1,226	1,827	831	2,623	140,025	
	1989	26,048	111,889	1,331	2,029	897	2,723	144,917	
	1990	26,602	114,586	1,416	2,344	953	2,791	148,692	
	1991	27,277	116,851	1,440	2,613	1,154	2,985	152,320	
	1992	28,911	118,634	1,516	2,904	1,306	3,298	156,569	
	1993	29,561	116,573	1,482	3,215	1,445	3,373	155,649	
	1994	30,321	116,246	1,542	3,554	1,539	3,243	156,445	
	1995	30,473	116,553	1,615	3,802	1,696	3,275	157,414	
	1996	30,551	115,078	1,640	3,977	1,876	3,418	156,540	
	1997	31,783	115,571	1,707	4,224	2,045	3,710	159,040	
	1998	32,115	114,884	1,661	4,372	2,108	3,818	158,958	
1999	32,980	115,095	1,658	4,554	2,218	4,482	160,987		
2000	33,300	115,525	1,747	4,710	2,377	5,102	162,761		
2001	35,358	119,029	1,882	4,973	2,629	5,921	169,792		
2002	37,836	122,493	2,005	5,404	2,844	6,385	176,967		
2003	40,597	124,775	2,063	5,701	3,165	7,046	183,347		

UNC-GA ProgAssess/Enr.AT003.U/11-4-03

Source: OCR (Compliance Report of Institutions of Higher Education).

Note: Effective fall 2000, historical data (1981-1999) were revised to include "distance education only" enrollments not included in previous reports. These data are taken from historical Student Data Files, where the quality of "distance education only" data improves in more recent years. Fall 2000 and forward data include "distance education only" directly from the Student Data File. Fall 1972 "Other" is included in "White." Fall 1990 and later - "Other/Unknown" includes non-resident aliens, unreported race, and mixed race.

**UNC College-Going Rates of North Carolina
First-Time Freshmen, 1986 - 2003**

	Black	White	Amer. Indian	Asian	Hispanic	Total**
a. N.C. High School Graduates*						
1985-86	18,684	48,944	861	391	170	69,081
1986-87	17,811	50,070	800	413	172	69,296
1987-88	18,288	51,785	785	480	199	71,577
1988-89	19,170	52,290	828	543	237	73,105
1989-90	18,281	47,604	888	643	280	67,736
1990-91	18,055	45,798	794	662	317	65,664
1991-92	17,375	44,692	873	710	384	64,060
1992-93	17,141	44,272	815	775	409	63,454
1993-94	16,110	42,460	813	854	484	60,753
1994-95	16,458	44,196	835	939	514	62,946
1995-96	15,652	42,598	764	918	607	60,544
1996-97	16,069	43,115	728	1,038	686	61,638
1997-98	15,923	44,379	735	1,097	826	63,136
1998-99	16,089	44,868	728	1,231	956	64,148
1999-00	16,837	46,364	769	1,343	1,083	66,403
2000-01	17,041	47,019	801	1,363	1,290	67,521
2001-02	17,627	49,063	772	1,445	1,580	70,494
2002-03	18,148	50,802	786	1,551	1,763	73,054
b. Enrolled as First-Time Freshmen in UNC Institutions Within the Same Year						
Fall 1986	3,718	12,313	165	218	54	16,478
Fall 1987	3,747	12,915	146	205	65	17,087
Fall 1988	3,877	13,237	174	238	67	17,598
Fall 1989	4,075	12,732	201	283	79	17,386
Fall 1990	3,556	11,881	178	322	85	16,031
Fall 1991	3,702	11,653	156	333	97	15,969
Fall 1992	3,859	12,120	190	350	113	16,661
Fall 1993	3,897	11,833	190	390	109	16,463
Fall 1994	3,785	11,992	197	426	123	16,568
Fall 1995	4,026	12,494	213	444	154	17,363
Fall 1996	4,168	12,676	249	422	186	17,728
Fall 1997	4,358	13,154	223	508	203	18,500
Fall 1998	4,431	13,671	234	544	222	19,193
Fall 1999	4,583	13,727	217	556	249	19,445
Fall 2000	4,642	14,205	250	648	277	20,151
Fall 2001	5,012	14,542	237	605	321	20,868
Fall 2002	5,199	14,598	232	618	351	21,251
Fall 2003	5,691	15,294	241	727	379	22,663
c. Proportion Entering a UNC Institution						
Fall 1986	19.9%	25.2%	19.2%	55.8%	31.8%	23.9%
Fall 1987	21.0%	25.8%	18.3%	49.6%	37.8%	24.7%
Fall 1988	21.2%	25.6%	22.2%	49.6%	33.7%	24.6%
Fall 1989	21.3%	24.3%	24.3%	52.1%	33.3%	23.8%
Fall 1990	19.5%	25.0%	20.0%	50.1%	30.4%	23.7%
Fall 1991	20.5%	25.4%	19.6%	50.3%	30.6%	24.3%
Fall 1992	22.2%	27.1%	21.8%	49.3%	29.4%	26.0%
Fall 1993	22.7%	26.7%	23.3%	50.3%	26.7%	25.9%
Fall 1994	23.5%	28.2%	24.2%	49.9%	25.4%	27.3%
Fall 1995	24.5%	28.3%	25.5%	47.3%	30.0%	27.6%
Fall 1996	26.6%	29.8%	32.6%	46.0%	30.6%	29.3%
Fall 1997	27.1%	30.5%	30.6%	48.9%	29.6%	30.0%
Fall 1998	27.8%	30.8%	31.8%	49.6%	26.9%	30.4%
Fall 1999	28.5%	30.6%	29.8%	45.2%	26.0%	30.3%
Fall 2000	27.6%	30.6%	32.5%	48.3%	25.6%	30.3%
Fall 2001	29.4%	30.9%	29.6%	44.4%	24.9%	30.9%
Fall 2002	29.5%	29.8%	30.1%	42.8%	22.2%	30.1%
Fall 2003	31.4%	30.1%	30.7%	46.9%	21.5%	31.0%

UNC-GA ProgAssess/ HSGrads.AT007.U/ 11-4-03

* Estimates of private N.C. high school graduates by race assume that 94% were white, 5% black, .6% Asian, and .4% Hispanic in each year. Estimates of total graduates in private school are derived by using 99% of 12th grade enrollment, which is obtained from the web site of NC Dept. of Administration, Div. of Non-Public Education.

** Total includes a small number of students in the "Other" race category.

- Source:
1. Public high school graduates - State Department of Public Instruction
The number of public high school graduates for 2002-03 was estimated by DPI, 10-29-03.
 2. Private high school graduates - Estimated by OP Staff.
 3. Special high school graduates - data provided directly by the high school (NCSA provided on Student Data File).
 4. First-time freshmen enrollments - Student Data Files.

Number and Average* Recentered SAT Scores of UNC First-Time Freshmen
by Residence Status and Institution, Fall 1993 - Fall 2003**

Institution and Year	Total First-Time Freshmen		In-State			Out-of-State		
	Number of Students	Average Combined SAT	Number of Students	Percent of Total	Average Combined SAT	Number of Students	Percent of Total	Average Combined SAT
ASU								
1993	1,910	1088	1,621	84.9%	1083	289	15.1%	1114
1994	1,971	1091	1,671	84.8%	1090	300	15.2%	1101
1995	2,206	1094	1,858	84.2%	1089	348	15.8%	1122
1996	2,032	1087	1,753	86.3%	1084	279	13.7%	1104
1997	2,170	1076	1,821	83.9%	1073	349	16.1%	1093
1998	2,320	1074	1,964	84.7%	1068	356	15.3%	1109
1999	2,209	1092	1,925	87.1%	1090	284	12.9%	1102
2000	2,556	1086	2,154	84.3%	1084	402	15.7%	1100
2001	2,312	1101	1,967	85.1%	1097	345	14.9%	1122
2002	2,419	1111	2,090	86.4%	1108	329	13.6%	1128
2003	2,473	1115	2,156	87.2%	1113	317	12.8%	1128
ECU								
1993	2,435	1026	1,975	81.1%	1016	460	18.9%	1067
1994	2,363	1019	1,973	83.5%	1009	390	16.5%	1069
1995	2,642	1018	2,177	82.4%	1009	465	17.6%	1061
1996	2,807	1015	2,348	83.6%	1009	459	16.4%	1046
1997	2,935	1014	2,346	79.9%	1009	589	20.1%	1035
1998	2,819	1019	2,360	83.7%	1013	459	16.3%	1048
1999	3,270	1016	2,566	78.5%	1012	704	21.5%	1028
2000	3,112	1035	2,498	80.3%	1030	614	19.7%	1055
2001	3,197	1029	2,674	83.6%	1023	523	16.4%	1063
2002	3,580	1036	2,832	79.1%	1034	748	20.9%	1045
2003	3,534	1048	2,898	82.0%	1046	636	18.0%	1055
ECSU								
1993	461	902	404	87.6%	894	57	12.4%	966
1994	391	883	330	84.4%	873	61	15.6%	939
1995	382	857	333	87.2%	852	49	12.8%	895
1996	381	840	329	86.4%	836	52	13.6%	863
1997	427	825	376	88.1%	820	51	11.9%	858
1998	380	823	330	86.8%	821	50	13.2%	837
1999	404	823	356	88.1%	819	48	11.9%	845
2000	444	822	353	79.5%	822	91	20.5%	824
2001	366	837	298	81.4%	830	68	18.6%	866
2002	464	817	374	80.6%	812	90	19.4%	840
2003	464	848	400	86.2%	844	64	13.8%	869
FSU								
1993	452	931	406	89.8%	925	46	10.2%	979
1994	453	918	370	81.7%	913	83	18.3%	936
1995	389	915	338	86.9%	912	51	13.1%	934
1996	597	867	539	90.3%	862	58	9.7%	905
1997	515	833	464	90.1%	832	51	9.9%	843
1998	530	833	479	90.4%	830	51	9.6%	855
1999	806	867	672	83.4%	852	134	16.6%	942
2000	546	840	488	89.4%	836	58	10.6%	872
2001	776	845	683	88.0%	841	93	12.0%	871
2002	750	868	670	89.3%	867	80	10.7%	877
2003	802	867	722	90.0%	869	80	10.0%	846
NCA&T								
1993	1,444	938	1,163	80.5%	911	281	19.5%	1046
1994	1,342	946	1,094	81.5%	919	248	18.5%	1049
1995	1,404	953	1,159	82.5%	923	245	17.5%	1064
1996	1,324	933	1,090	82.3%	903	234	17.7%	1047
1997	1,391	928	1,176	84.5%	907	215	15.5%	1028
1998	1,377	922	1,108	80.5%	896	269	19.5%	1024
1999	1,538	911	1,231	80.0%	886	307	20.0%	999
2000	1,672	896	1,347	80.6%	867	325	19.4%	1014
2001	1,771	898	1,416	80.0%	869	355	20.0%	1012
2002	2,043	899	1,581	83.3%	874	462	16.7% ***	984
2003	2,240	889	1,697	83.3%	865	543	17.8% ***	965

Number and Average* Recentered SAT Scores of UNC First-Time Freshmen
by Residence Status and Institution, Fall 1993 - Fall 2003**

Institution and Year	Total First-Time Freshmen		In-State			Out-of-State		
	Number of Students	Average Combined SAT	Number of Students	Percent of Total	Average Combined SAT	Number of Students	Percent of Total	Average Combined SAT
NCCU								
1993	855	898	661	77.3%	891	194	22.7%	919
1994	767	962	659	85.9%	952	108	14.1%	1007
1995	553	931	459	83.0%	913	94	17.0%	1016
1996	706	912	584	82.7%	901	122	17.3%	967
1997	736	894	587	79.8%	867	149	20.2%	992
1998	695	898	615	88.5%	876	80	11.5%	1071
1999	653	876	566	86.7%	861	87	13.3%	968
2000	740	860	665	89.9%	853	75	10.1%	927
2001	798	861	660	82.7%	852	138	17.3%	902
2002	843	852	693	82.2%	849	150	17.8%	867
2003	1,053	834	872	82.8%	830	181	17.2%	854
NCSA								
1993	98	1135	39	39.8%	1138	59	60.2%	1132
1994	90	1109	40	44.4%	1121	50	55.6%	1098
1995	99	1154	43	43.4%	1153	56	56.6%	1156
1996	105	1107	44	41.9%	1134	61	58.1%	1086
1997	157	1139	66	42.0%	1155	91	58.0%	1130
1998	137	1136	49	35.8%	1108	88	64.2%	1151
1999	142	1109	62	43.7%	1116	80	56.3%	1104
2000	153	1104	59	38.6%	1114	94	61.4%	1097
2001	148	1113	70	47.3%	1111	78	52.7%	1116
2002	142	1154	47	33.1%	1151	95	66.9%	1156
2003	121	1153	53	43.8%	1151	68	56.2%	1154
NCSU								
1993	3,176	1158	2,678	84.3%	1159	498	15.7%	1153
1994	3,530	1143	2,986	84.6%	1144	544	15.4%	1139
1995	3,528	1149	3,047	86.4%	1150	481	13.6%	1147
1996	3,535	1148	3,087	87.3%	1149	448	12.7%	1145
1997	3,650	1154	3,195	87.5%	1154	455	12.5%	1151
1998	3,641	1159	3,229	88.7%	1161	412	11.3%	1143
1999	3,553	1179	3,102	87.3%	1182	451	12.7%	1161
2000	3,748	1185	3,332	88.9%	1188	416	11.1%	1160
2001	3,831	1175	3,350	87.4%	1177	481	12.6%	1161
2002	3,628	1193	3,237	89.2%	1196	391	10.8%	1164
2003	3,851	1195	3,420	88.8%	1199	431	11.2%	1167
UNC-A								
1993	397	1145	317	79.8%	1150	80	20.2%	1126
1994	398	1137	339	85.2%	1135	59	14.8%	1151
1995	397	1133	324	81.6%	1133	73	18.4%	1132
1996	455	1141	380	83.5%	1141	75	16.5%	1144
1997	473	1150	392	82.9%	1150	81	17.1%	1148
1998	480	1142	402	83.8%	1143	78	16.3%	1131
1999	460	1151	393	85.4%	1153	67	14.6%	1134
2000	502	1155	412	82.1%	1155	90	17.9%	1155
2001	455	1160	387	85.1%	1163	68	14.9%	1139
2002	428	1160	352	82.2%	1164	76	17.8%	1138
2003	599	1166	471	78.6%	1164	128	21.4%	1173
UNC-CH								
1993	3,331	1207	2,659	79.8%	1187	672	20.2%	1291
1994	3,496	1211	2,761	79.0%	1188	735	21.0%	1300
1995	3,239	1222	2,678	82.7%	1206	561	17.3%	1299
1996	3,274	1222	2,661	81.3%	1206	613	18.7%	1290
1997	3,417	1220	2,853	83.5%	1207	564	16.5%	1289
1998	3,437	1230	2,836	82.5%	1216	601	17.5%	1300
1999	3,396	1245	2,696	79.4%	1226	700	20.6%	1317
2000	3,415	1251	2,798	81.9%	1233	617	18.1%	1331
2001	3,687	1257	3,046	82.6%	1241	641	17.4%	1332
2002	3,460	1267	2,848	82.3%	1255	612	17.7%	1326
2003	3,516	1282	2,897	82.4%	1272	619	17.6%	1331

Number and Average* Recentered SAT Scores of UNC First-Time Freshmen
by Residence Status and Institution, Fall 1993 - Fall 2003**

Institution and Year	Total First-Time Freshmen		In-State			Out-of-State		
	Number of Students	Average Combined SAT	Number of Students	Percent of Total	Average Combined SAT	Number of Students	Percent of Total	Average Combined SAT
UNC-C								
1993	1,730	1029	1,450	83.8%	1026	280	16.2%	1048
1994	1,587	1035	1,286	81.0%	1031	301	19.0%	1050
1995	1,686	1035	1,385	82.1%	1029	301	17.9%	1060
1996	1,719	1023	1,427	83.0%	1019	292	17.0%	1043
1997	1,955	1015	1,649	84.3%	1010	306	15.7%	1046
1998	2,179	1013	1,879	86.2%	1012	300	13.8%	1027
1999	2,122	1034	1,812	85.4%	1032	310	14.6%	1048
2000	2,203	1043	1,884	85.5%	1040	319	14.5%	1067
2001	2,351	1052	2,003	85.2%	1051	348	14.8%	1058
2002	2,430	1065	2,123	87.4%	1065	307	12.6%	1065
2003	2,519	1069	2,181	86.6%	1068	338	13.4%	1071
UNC-G								
1993	1,525	1058	1,227	80.5%	1055	298	19.5%	1071
1994	1,427	1041	1,161	81.4%	1037	266	18.6%	1060
1995	1,821	1011	1,524	83.7%	1007	297	16.3%	1037
1996	1,567	1027	1,331	84.9%	1023	236	15.1%	1055
1997	1,595	1028	1,354	84.9%	1025	241	15.1%	1049
1998	1,832	1030	1,568	85.6%	1029	264	14.4%	1037
1999	1,941	1038	1,671	86.1%	1033	270	13.9%	1068
2000	1,894	1037	1,660	87.6%	1034	234	12.4%	1061
2001	1,916	1033	1,656	86.4%	1028	260	13.6%	1068
2002	2,099	1035	1,837	87.5%	1031	262	12.5%	1061
2003	2,056	1045	1,857	90.3%	1042	199	9.7%	1073
UNC-P								
1993	440	933	413	93.9%	930	27	6.1%	990
1994	433	942	419	96.8%	941	14	3.2%	966
1995	418	938	403	96.4%	937	15	3.6%	948
1996	465	898	451	97.0%	896	14	3.0%	979
1997	494	914	478	96.8%	914	16	3.2%	919
1998	468	921	443	94.7%	920	25	5.3%	929
1999	481	932	452	94.0%	927	29	6.0%	1013
2000	579	927	543	93.8%	927	36	6.2%	927
2001	700	924	661	94.4%	922	39	5.6%	962
2002	722	934	660	91.4%	931	62	8.6%	966
2003	809	950	753	93.1%	946	56	6.9%	1005
UNC-W								
1993	1,449	1038	1,163	80.3%	1031	286	19.7%	1068
1994	1,343	1066	1,070	79.7%	1056	273	20.3%	1105
1995	1,412	1062	1,193	84.5%	1054	219	15.5%	1104
1996	1,670	1055	1,390	83.2%	1044	280	16.8%	1112
1997	1,378	1080	1,157	84.0%	1072	221	16.0%	1124
1998	1,718	1082	1,421	82.7%	1077	297	17.3%	1103
1999	1,670	1086	1,375	82.3%	1081	295	17.7%	1112
2000	1,673	1097	1,342	80.2%	1092	331	19.8%	1117
2001	1,996	1091	1,606	80.5%	1085	390	19.5%	1116
2002	1,640	1106	1,382	84.3%	1099	258	15.7%	1146
2003	1,772	1104	1,535	86.6%	1097	237	13.4%	1147
WCU								
1993	1,057	977	941	89.0%	977	116	11.0%	982
1994	1,248	977	1,120	89.7%	975	128	10.3%	989
1995	1,161	965	1,048	90.3%	964	113	9.7%	984
1996	1,182	983	1,071	90.6%	984	111	9.4%	980
1997	1,226	980	1,115	90.9%	977	111	9.1%	1009
1998	1,106	998	995	90.0%	996	111	10.0%	1019
1999	1,156	994	1,044	90.3%	992	112	9.7%	1006
2000	1,214	1004	1,101	90.7%	1003	113	9.3%	1010
2001	1,180	1011	1,006	85.3%	1010	174	14.7%	1020
2002	1,224	1012	1,080	88.2%	1011	144	11.8%	1023
2003	1,495	1023	1,371	91.7%	1023	124	8.3%	1024

Number and Average* Recentered SAT Scores of UNC First-Time Freshmen
by Residence Status and Institution, Fall 1993 - Fall 2003**

Institution and Year	Total First-Time Freshmen		In-State			Out-of-State		
	Number of Students	Average Combined SAT	Number of Students	Percent of Total	Average Combined SAT	Number of Students	Percent of Total	Average Combined SAT
WSSU								
1993	385	893	344	89.4%	895	41	10.6%	874
1994	342	918	319	93.3%	914	23	6.7%	994
1995	457	870	420	91.9%	862	37	8.1%	988
1996	494	851	454	91.9%	848	40	8.1%	889
1997	493	849	462	93.7%	846	31	6.3%	899
1998	532	845	469	88.2%	839	63	11.8%	893
1999	487	837	441	90.6%	832	46	9.4%	881
2000	506	869	450	88.9%	865	56	11.1%	899
2001	624	865	558	89.4%	861	66	10.6%	897
2002	687	868	615	89.5%	867	72	10.5%	871
2003	897	867	786	87.6%	866	111	12.4%	872
UNC TOTAL								
1993	21,145	1067	17,461	82.6%	1058	3,684	17.4%	1109
1994	21,181	1074	17,598	83.1%	1064	3,583	16.9%	1122
1995	21,794	1068	18,389	84.4%	1060	3,405	15.6%	1114
1996	22,313	1061	18,939	84.9%	1053	3,374	15.1%	1107
1997	23,012	1060	19,491	84.7%	1053	3,521	15.3%	1100
1998	23,651	1064	20,147	85.2%	1057	3,504	14.8%	1106
1999	24,288	1068	20,364	83.8%	1061	3,924	16.2%	1104
2000	24,957	1073	21,086	84.5%	1067	3,871	15.5%	1108
2001	26,108	1071	22,041	84.4%	1065	4,067	15.6%	1107
2002	26,559	1072	22,421	84.4%	1069	4,138	15.6%	1092
2003	28,201	1075	24,069	85.3%	1072	4,132	14.7%	1094

UNC-GA ProgAssess/Admiss.AT001.U/11-4-03

* SAT averages are based only on freshmen with SAT scores. Number of students includes both those with and without SAT scores. About five percent of the total first-time freshmen in Fall 2003 did not have SAT scores.

** Excludes four-year diploma students at NCSA and Agricultural Institute students at NCSU.

*** Does not include out-of-state first-time freshmen majoring in engineering.

Note: Extension students are included in the table from 1998 to 2003.

Figure 1: UNC Fall Headcount Enrollment 1993 - 2003

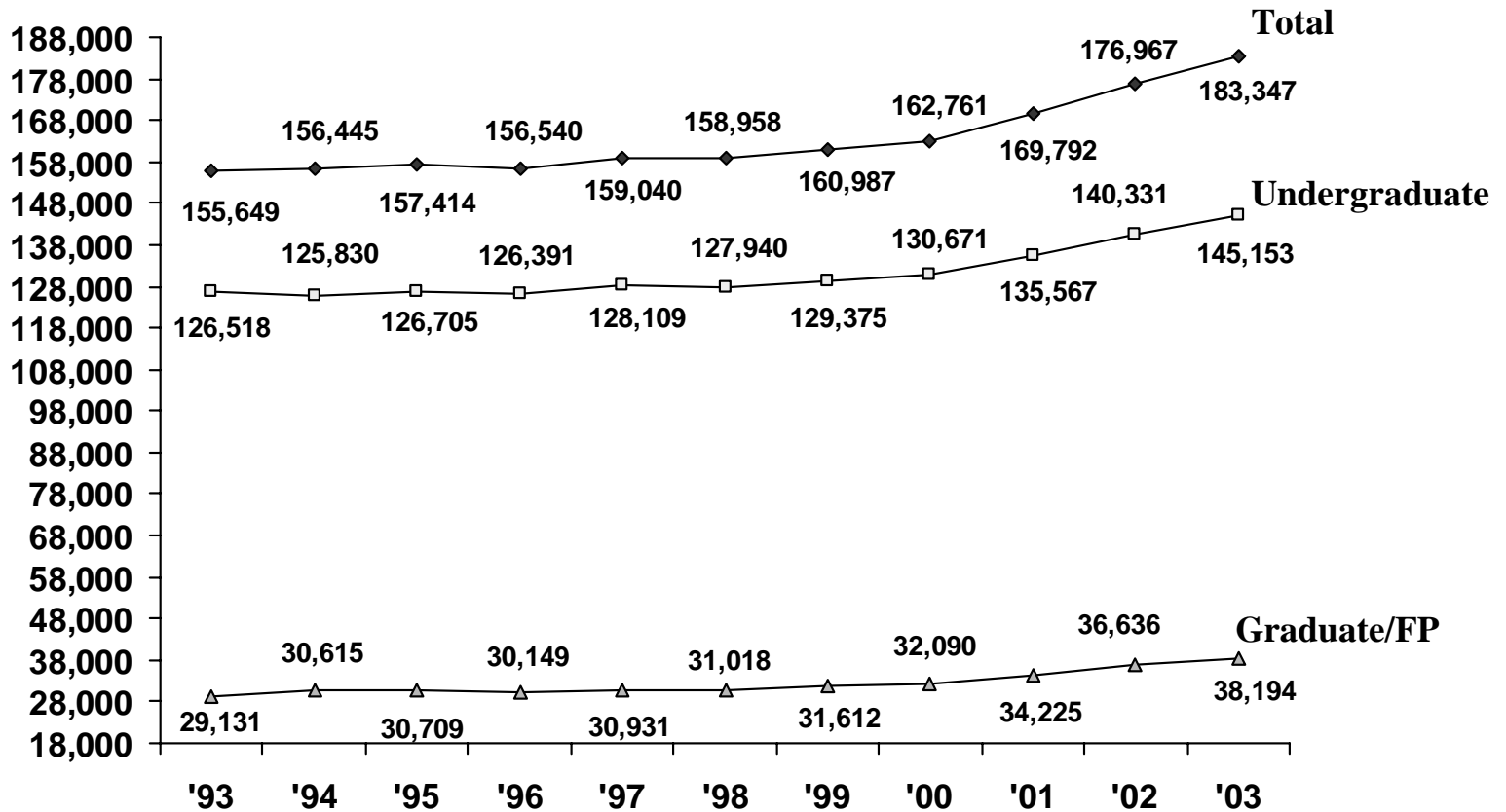
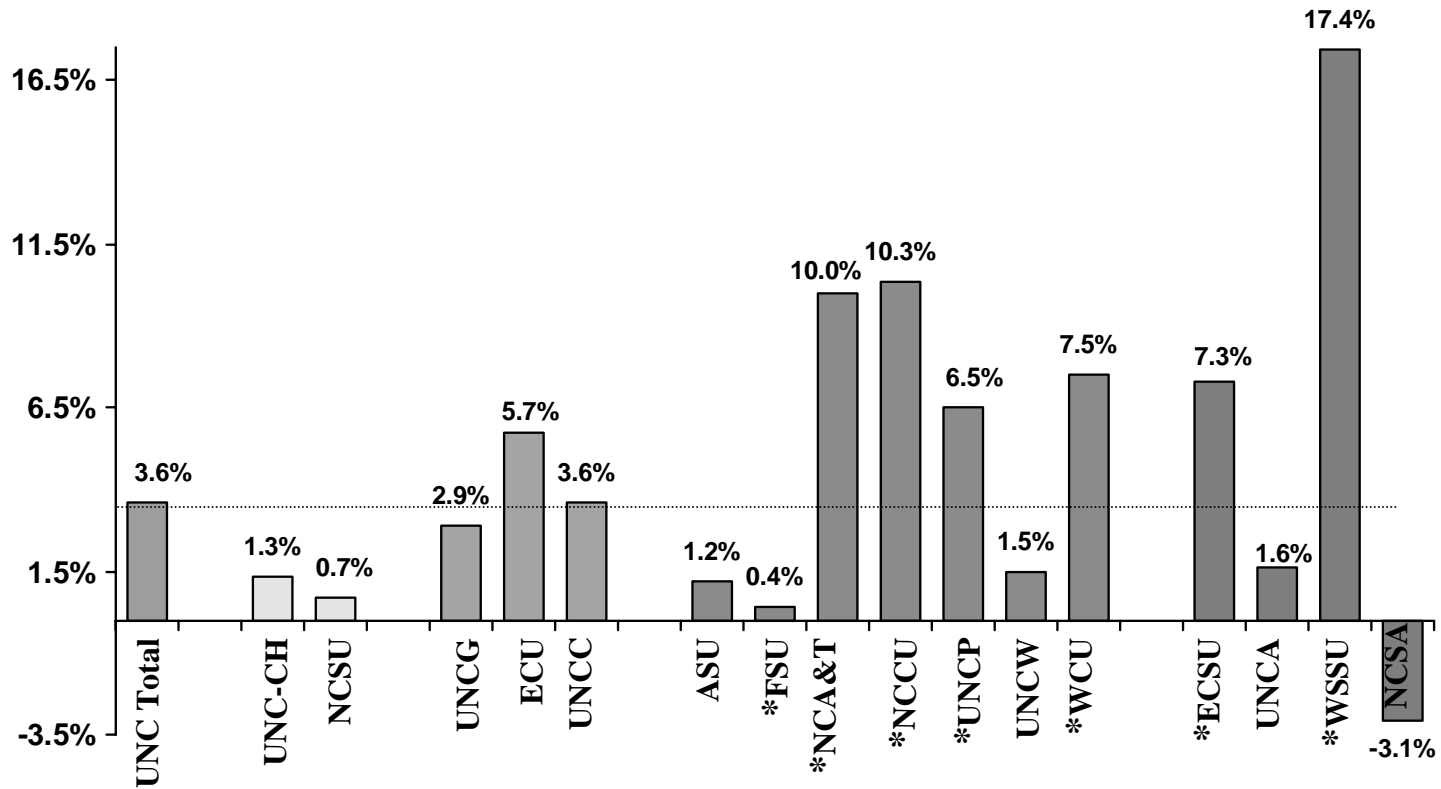


Figure 2: Percent of Fall Headcount Enrollment Increase, Fall 2003



* Focused-growth institutions

Figure 3: Percent of Fall Headcount Enrollment Increase, Fall 2003

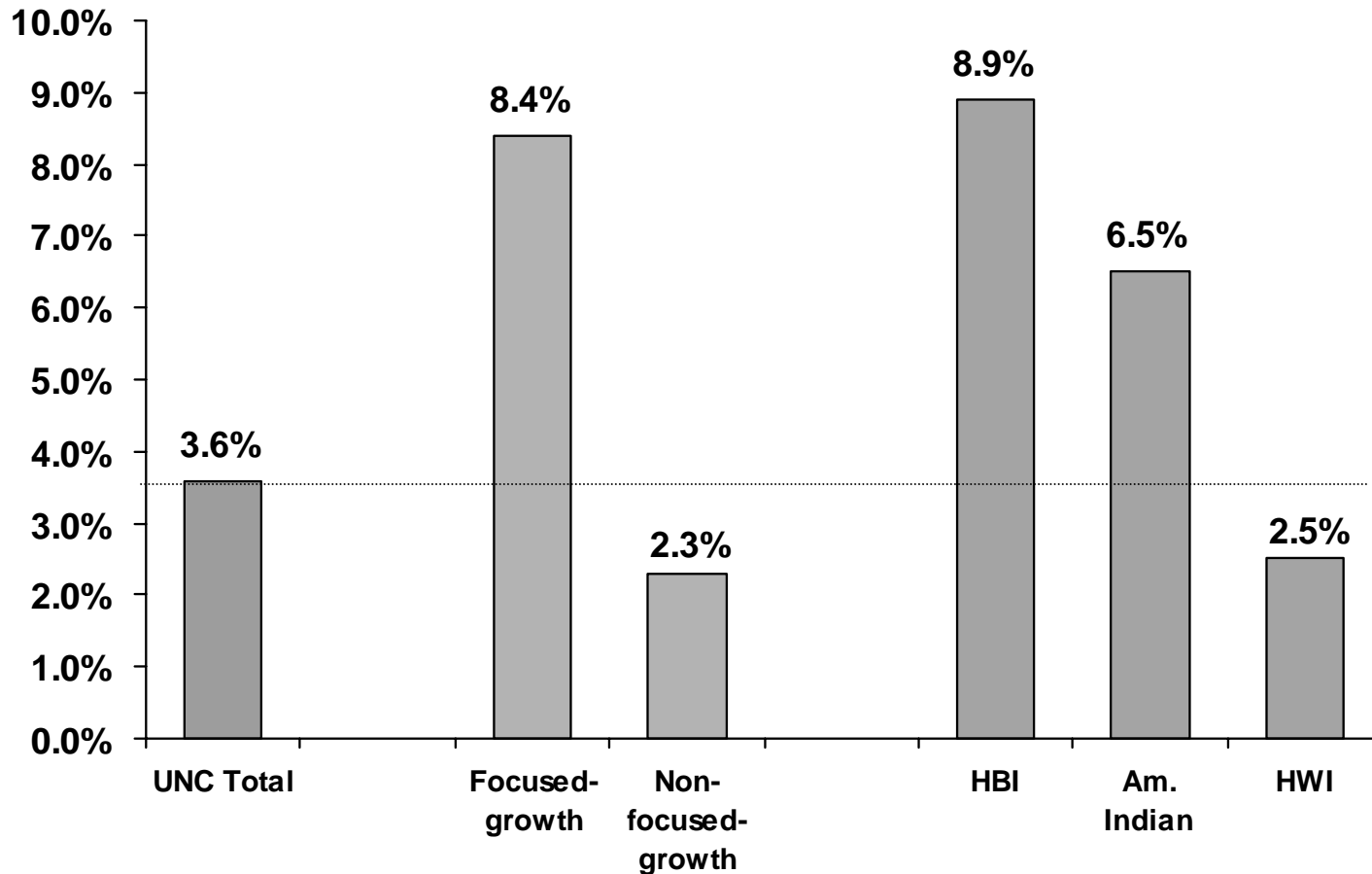


Figure 4: Percent of Fall Headcount Enrollment Increase, Fall 2003

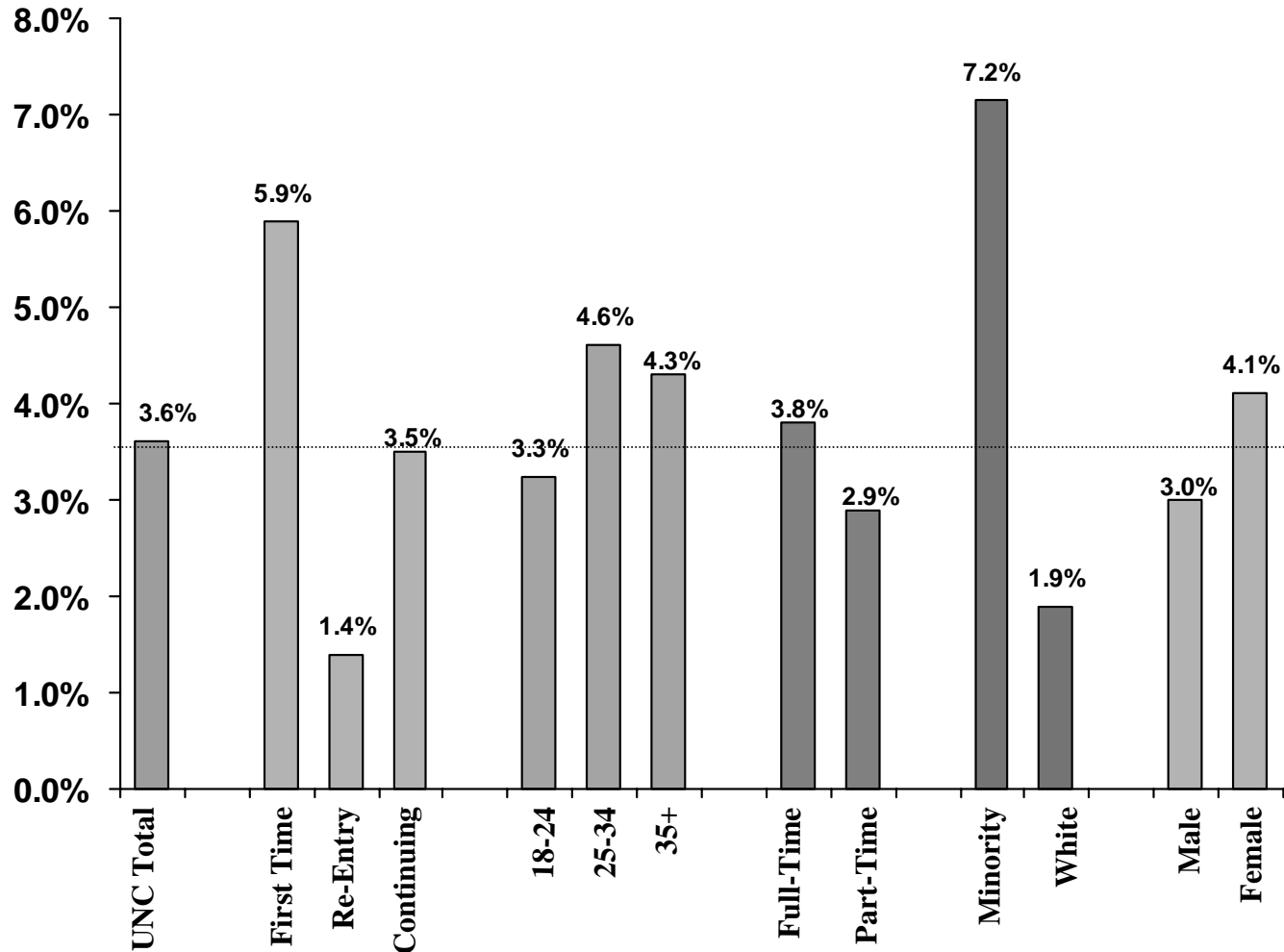


Figure 5: UNC Going Rate for North Carolina High School Graduates, 1993-2003

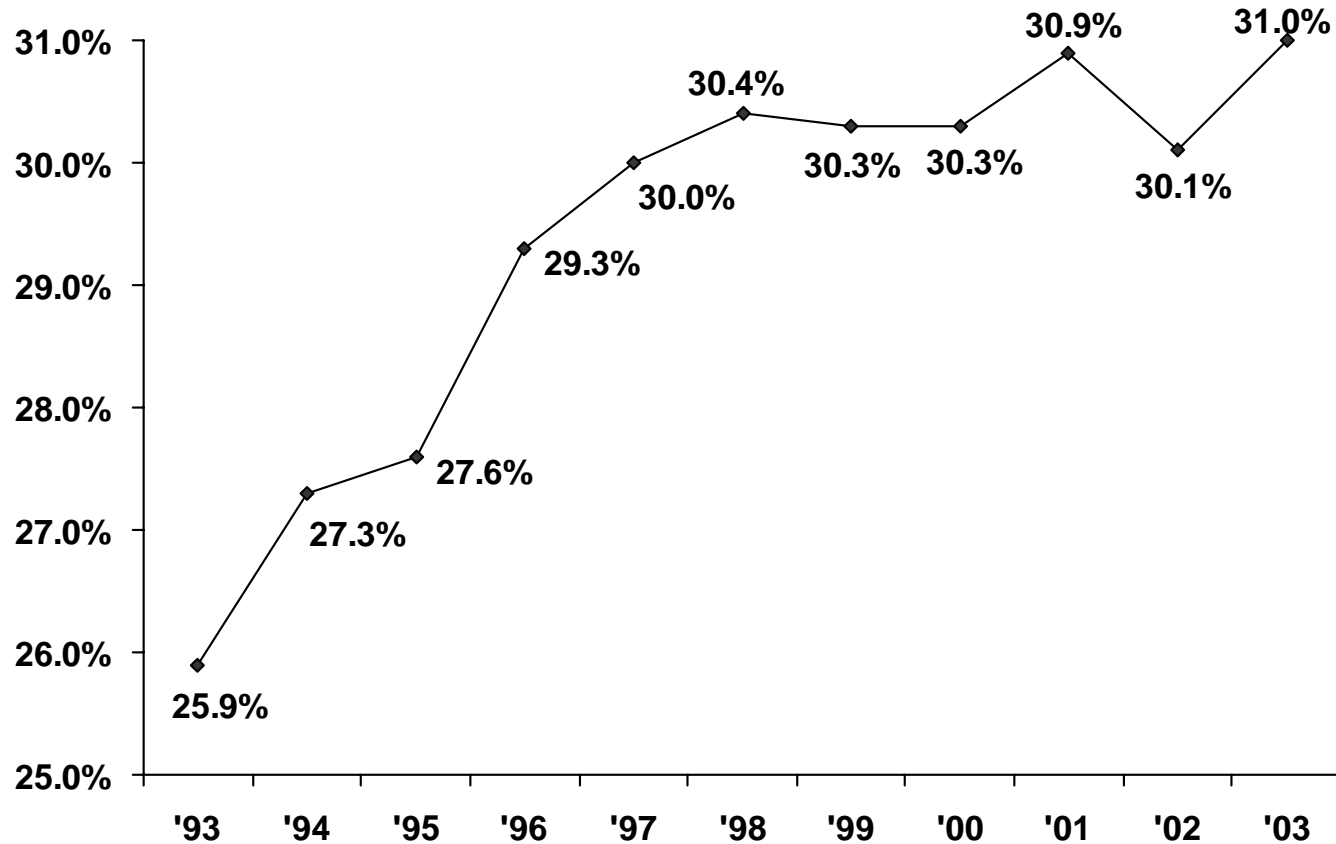


Figure 6: Percent Increase of Fall Headcount Enrollment - New Students, Fall 2003

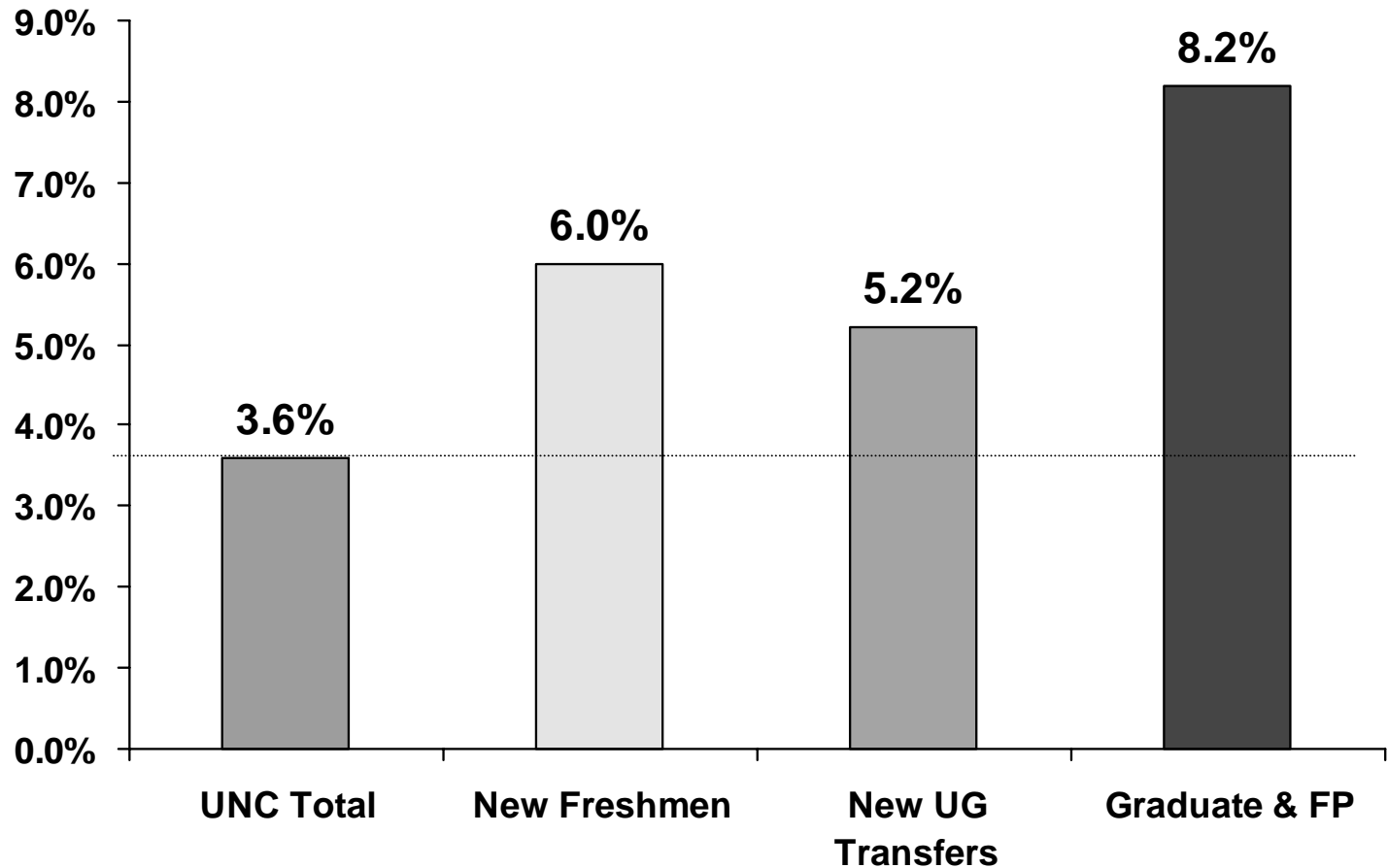


Figure 7: Percent of Fall Headcount Enrollment Increase, Fall 2003

