

# Report on Retention, Graduation, and Time-to-Degree

---

*Presented to the Committee  
on Educational Planning, Policies, and Programs*



**UNC General Administration  
January 11, 2001**

## Introduction

This report summarizes information on the retention, graduation, and persistence rates of students who enter UNC institutions as first-time full-time freshmen in the fall semester of the academic year. It also provides information about the percentage of students who complete their baccalaureate degrees within four years and some of the factors that affect the length of time that students take to graduate. Finally, it presents information on the course loads of full-time undergraduates and the credit hours attempted and earned by baccalaureate graduates. Data are presented in trend format to show the changes that take place over time. Appendix A provides detailed data on retention, graduation, and persistence rates by institution and for all UNC institutions taken as a group. Highlights of this year's changes are summarized below.

### Highlights: Retention, Graduation, and Time-to-Degree

- This is the first year that state-level data have been available to facilitate comparison of freshman-to-sophomore retention rates and five-year graduation rates. Published in *Measuring Up 2000, The State-By-State Report Card for Higher Education*, (released in November 2000 by the National Center for Public Policy and Higher Education), the report gave North Carolina a grade of “B+” on the performance category “Completion Rates.” It showed that North Carolina’s freshman-to-sophomore year retention rates at four-year colleges nationwide ranked 14<sup>th</sup> among the states, and that North Carolina’s five-year graduation rate ranked 12<sup>th</sup>. On its overall category index, North Carolina ranked 8<sup>th</sup> among the states. These data include public and private institutions.
- UNC institutions showed improvements in third-year retention rates and four- and five-year graduation rates in year 2000 data compared to year 1999 data (Figure 1). UNC institutions, in synch with national trends, showed a slight decrease in their freshman-to-sophomore year retention rates, although the gap between black and white freshmen on this measure closed by 1.1 percentage points (Figure 2).
- Comparisons of the NCAA’s Division I institutions with UNC’s Division I institutions show that the six-year graduation rates of UNC institutions continue to exceed those of the NCAA’s Division I institutions by a wider margin than that reported in last year’s report (Figure 3).
- Data on the four-year graduation rates of UNC institutions show increases among first-time freshman who started as full-time students and attended full-time during each of the four fall semesters when they were followed up (Table 1). Roughly half of UNC institutions showed improvement on this measure.
- Student survey data suggest that the proportion of students who are employed while they attend a UNC institution continues to increase. The most recent freshman survey data show that 44.4 % of freshmen have plans to work during their first year in college, while the most recent alumni survey data show that only 24.1 % of students are unemployed during their senior year (Figures 4 and 5).

- The high rate of student employment is the leading reason that full-time students reduce their course loads while they attend college. The data on average course loads of full-time undergraduates show that the average dropped from 14.78 hours last year to 14.74 hours this year (Table 2).
- Despite this small drop in average course loads, the percentage of students who graduate in four year has risen for five straight years, and the average number of credit hours that graduates attempt in completing their degrees has continued to drop. It is now 135.6 hours for all baccalaureate graduates who have completed their degrees at the institution where they first matriculated, have only one major, and have not transferred any hours from another institution in the course of completing their degree.

## **Steps That Have Been Taken to Improve Retention, Graduation, and Persistence Rates and to Shorten Time-to-Graduation**

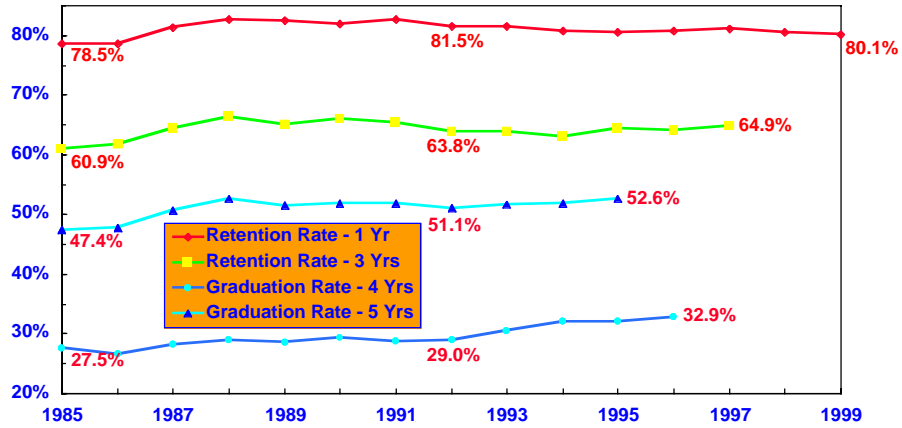
Since 1981, each institution in the University of North Carolina has tracked the retention and graduation rates of its new undergraduates. The tracking system is based on individual student records and permits analyses of subgroup data and analyses of trends as well. The tracking system facilitates comparisons among UNC institutions and among subgroups within these institutions.

Each year a group of “Retention Officers” from the UNC institutions meet to discuss strategies, new programs, and best practices for improving student retention and persistence. This group have been meeting throughout the 90s and their ideas and resulting actions have contributed to the University’s superior rankings with respect to retention and graduation rates.

In 1993-94, the UNC Board of Governors adopted a “Plan to Improve Graduation Rates and Shorten Time to Degree.” The plan set an upper limit on the number of hours that could be required in a major (128) unless the Board approved an exception, and required that all institutions revise their academic advising materials to reinforce the expectation that full-time students would carry 15 or more hours each semester.

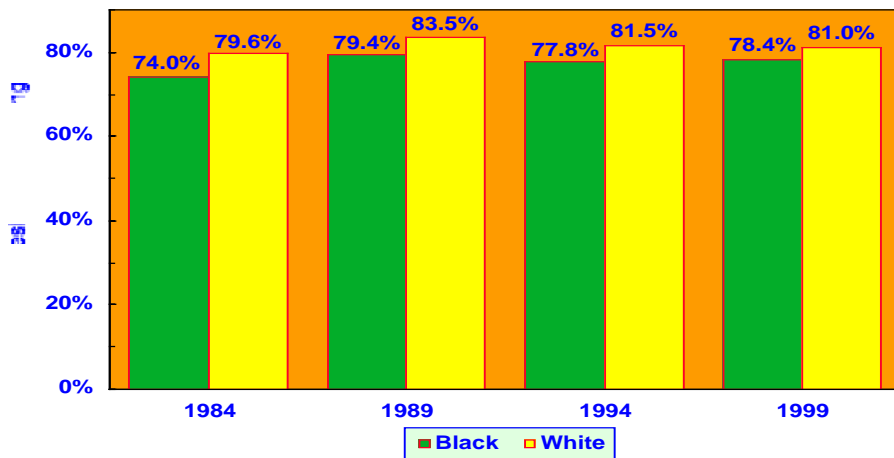
The legislature adopted a “tuition surcharge” of 25 % for courses that exceeded 110 percent of the number that students would be required to take in order to complete their degrees. The surcharge covered students who matriculated after the fall of 1994. The purpose of the surcharge was to send a message to students that they should be frugal in their course selections in order to shorten the time needed to graduate.

**Figure 1. UNC System-wide Retention and Graduation Rates\*  
(Tracking within Original Institution Only)**



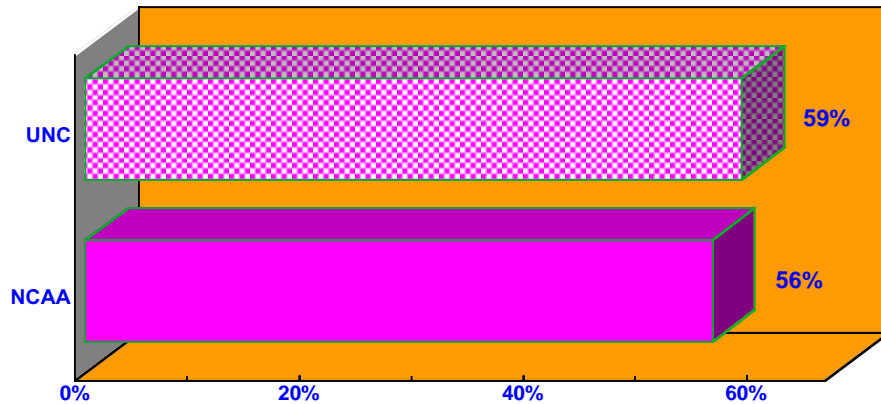
\*Based on Fall 2000 follow-up.

**Figure 2. Freshman-to-Sophomore Year Retention Rates\***



\*Rates apply to students who enrolled as first-time full-time freshmen at UNC institutions other than NCSA.

**Figure 3. UNC Versus NCAA Division I  
Six-Year Graduation Rates: 1999\***

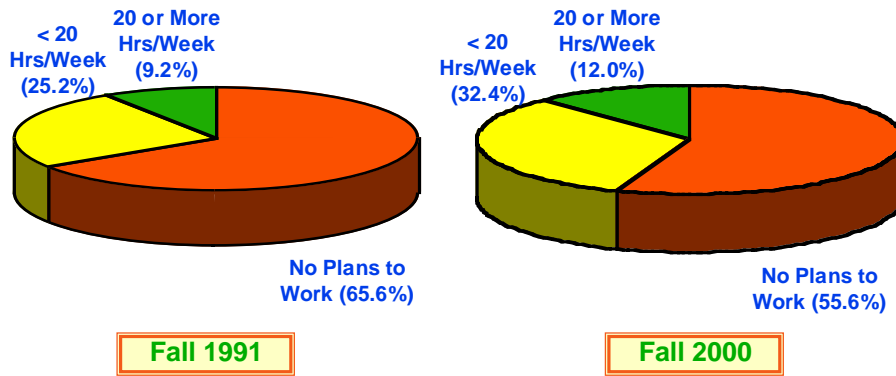


\*Class who ~~started~~ entered in Fall 1993 as of Fall 1999.

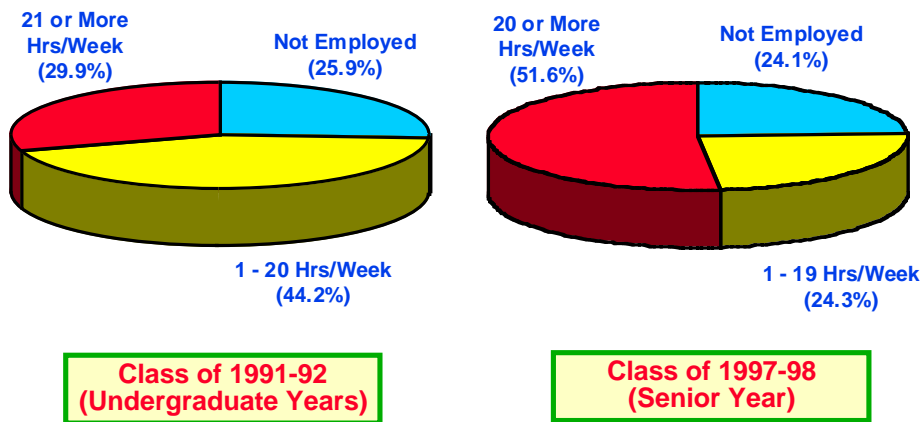
**Table 1. Four-Year Graduation Rates by Institution,  
Fall 1994 – Fall 1996 Cohorts**

Institution	Tracking Within Institution						Tracking Within System		
	Full-Time at Start			Full-Time Each Fall			Full-Time at Start		
	1994	1995	1996	1994	1995	1996	1994	1995	1996
ASU	31.2	34.0	34.1	52.0	53.0	53.8	33.5	35.8	37.0
ECU	21.9	23.9	25.6	42.6	46.2	48.3	22.9	24.9	27.2
ECSU	38.4	42.5	34.0	76.8	70.7	65.0	38.9	43.3	34.8
FSU	16.0	14.2	23.0	46.8	38.8	59.5	16.3	14.5	23.7
NCA&TSU	23.8	24.1	22.8	51.9	52.9	50.9	24.0	24.3	23.2
NCCU	24.8	26.9	26.1	51.2	61.6	51.5	24.9	28.0	27.0
NCSU	25.2	25.7	27.4	45.5	44.1	45.5	26.3	27.1	29.1
UNCA	31.1	31.4	30.7	63.8	57.0	56.0	32.9	34.7	34.2
UNC-CH	65.2	65.0	66.9	84.7	83.9	85.3	66.1	65.8	67.9
UNCC	23.1	23.8	21.3	47.4	47.6	47.1	24.2	25.2	22.9
UNCG	22.0	20.8	25.1	48.5	46.8	53.5	23.4	21.9	26.7
UNCP	22.1	19.8	17.8	57.6	51.0	45.3	22.9	20.2	19.4
UNCW	34.3	33.8	37.1	60.5	55.9	60.7	36.6	36.8	39.6
WCU	22.1	22.4	21.9	49.3	45.1	45.2	23.0	24.3	24.1
WSSU	24.7	27.4	19.8	56.6	56.1	45.4	24.7	28.0	20.6
UNC All	32.1	32.1	32.9	58.1	56.6	57.8	33.2	33.4	34.6

**Figure 4. Planned Hours of Work Per Week  
UNC Freshman Survey, Fall 1991 and Fall 2000**



**Figure 5. Average Hours Worked While in School - UNC Alumni Survey Data from Classes of 1991-92 and 1997-98**



**Table 2. Average Credit Hours Taken by Full-Time Degree-Seeking Undergraduates in UNC Institutions**

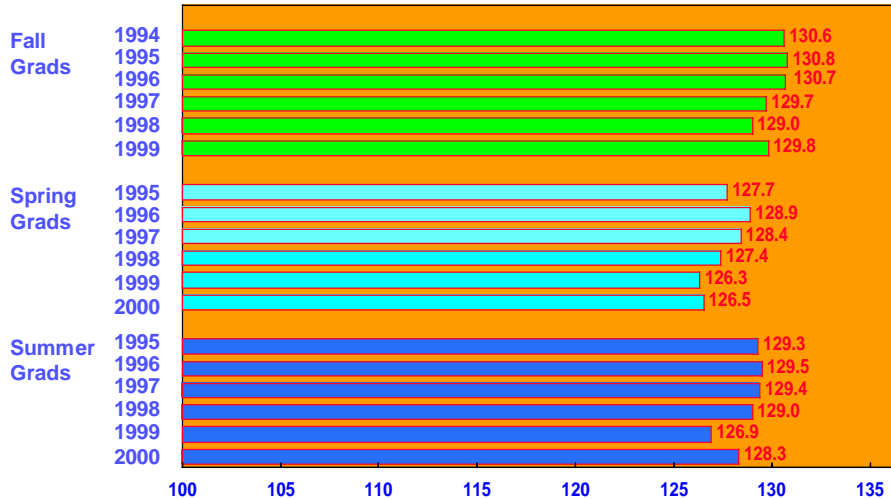
(As required by Section 89(a), Senate Bill 27, 1993 Session Laws)

Institution	1995		1996		1997		1998		1999		2000		
	Actual	Goal	Actual	Goal	Actual	Goal	Actual	Goal	Actual	Goal	Actual	Goal	
ASU	14.73	14.69	14.92	14.67	15.00	14.70	15.00	14.67	15.00	14.67	15.00	14.67	15.00
ECU	14.66	14.59	14.96	14.60	15.00	14.66	15.00	14.62	15.00	14.60	15.00	14.60	15.00
ECSU	15.99	15.86	15.00	15.75	15.00	15.78	15.00	15.71	15.00	15.67	15.00	15.67	15.00
FSU	14.49	14.61	14.88	14.79	15.00	14.73	15.00	14.66	15.00	14.76	15.00	14.76	15.00
NCA&TSU	15.46	15.48	15.00	15.41	15.00	15.39	15.00	15.35	15.00	15.34	15.00	15.34	15.00
NCCU	15.33	15.32	15.00	15.21	15.00	15.16	15.00	15.14	15.00	15.00	15.00	15.00	15.00
NCSU	14.82	14.92	14.95	14.96	15.00	15.01	15.00	15.05	15.00	15.02	15.00	15.02	15.00
UNCA	14.75	14.78	14.92	14.70	15.00	14.73	15.00	14.78	15.00	14.68	15.00	14.68	15.00
UNC-CH	14.65	14.74	14.87	14.68	15.00	14.65	15.00	14.67	15.00	14.58	15.00	14.58	15.00
UNCC	14.45	14.45	14.82	14.36	15.00	14.35	15.00	14.40	15.00	14.34	15.00	14.34	15.00
UNCG	14.65	14.67	14.92	14.66	15.00	14.59	15.00	14.49	15.00	14.52	15.00	14.52	15.00
UNCP	15.01	14.96	14.99	14.94	15.00	14.71	15.00	14.73	15.00	14.69	15.00	14.69	15.00
UNCW	14.53	14.54	14.86	14.57	15.00	14.60	15.00	14.66	15.00	14.60	15.00	14.60	15.00
WCU	15.17	15.05	15.00	15.00	15.00	15.05	15.00	14.99	15.00	15.01	15.00	15.01	15.00
WSSU	14.99	14.92	14.99	14.90	15.00	14.98	15.00	14.93	15.00	14.67	15.00	14.67	15.00
<b>UNC Total</b>	<b>14.79</b>	<b>14.80</b>	<b>14.94</b>	<b>14.78</b>	<b>15.00</b>	<b>14.78</b>	<b>15.00</b>	<b>14.78</b>	<b>15.00</b>	<b>14.74</b>	<b>15.00</b>	<b>14.74</b>	<b>15.00</b>

**Table 3. Average Credit Hours Attempted by UNC Baccalaureate Graduates Who Had Only a Single Major and No Transfer Hours**

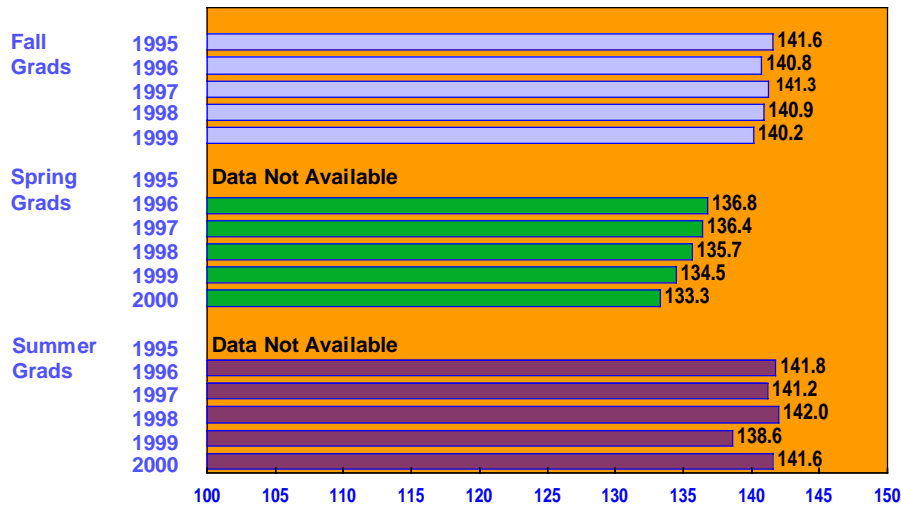
Institution	Fall			Spring			Fiscal Year		
	97-98	98-99	99-00	97-98	98-99	99-00	97-98	98-99	99-00
ASU	137.6	137.2	138.5	132.2	131.7	133.1	134.8	134.0	135.2
ECU	142.6	142.1	140.7	137.3	137.8	137.2	140.6	140.6	139.0
ECSU	N/A	130.9	139.8	131.5	131.7	135.7	131.2	132.3	136.7
FSU	150.9	154.9	130.5	146.9	144.7	128.9	148.4	148.6	129.4
NCA&TSU	160.0	163.6	160.1	151.5	148.8	147.8	154.4	152.6	151.0
NCCU	143.4	149.1	155.5	142.9	149.9	141.9	143.5	149.5	146.4
NCSA	N/A	N/A	N/A	161.4	174.1	176.5	160.3	174.1	176.5
NCSU	142.1	140.9	139.3	136.7	137.5	135.3	139.2	139.3	137.2
UNCA	137.4	136.8	133.7	132.8	132.5	132.9	134.4	133.4	133.5
UNC-CH	129.7	130.3	129.4	124.4	123.7	123.0	126.0	125.4	124.4
UNCC	147.0	146.6	145.2	143.6	141.0	139.6	144.8	143.9	142.3
UNCG	134.7	129.9	131.4	135.5	130.3	129.4	134.7	131.9	130.0
UNCP	141.8	145.0	151.7	144.0	139.5	141.1	144.2	141.5	145.3
UNCW	141.7	141.2	139.3	135.3	134.7	133.6	137.9	137.2	135.8
WCU	138.7	146.9	149.2	135.9	142.2	144.1	136.8	143.4	146.2
WSSU	155.1	134.6	146.0	148.3	140.6	144.7	149.4	140.0	144.7
<b>UNC Total</b>	<b>141.3</b>	<b>140.9</b>	<b>140.2</b>	<b>135.7</b>	<b>134.5</b>	<b>133.3</b>	<b>137.8</b>	<b>136.8</b>	<b>135.6</b>

## Average Credit Hours Earned by Baccalaureate Graduates\* of UNC Institutions



\*Includes only graduates who entered the institution as freshmen, took no transfer courses at another institution, and completed only one major.

## Average Credit Hours Attempted by Baccalaureate Graduates\* of UNC Institutions



\*Includes only graduates who entered the institution as freshmen, took no transfer courses at another institution, and completed only one major.

## Appendix A: Fall 2000 Retention, Graduation, and Persistence Rates of First-Time Full-Time Freshmen, by Institution

Data in this appendix are drawn from a system-wide database that permits individual students' enrollment and graduation status to be checked once per year in the fall semester. The students who are tracked each year are those who first entered their UNC institution as a first-time full-time freshman in a fall semester. Transfer students are separately tracked; their data are not shown in this appendix, but may be found on the world wide web at the location [www.ga.unc.edu/student\\_info/tsp/](http://www.ga.unc.edu/student_info/tsp/).

Each freshman cohort are tracked for a period of time that starts with their first fall semester and ends with the fall semester of follow-up. If this period is one year, the retention rate is called a one-year rate or a freshman-to-sophomore retention rate. Similarly, if the period is four years, then the retention, graduation, or persistence rate is called a four-year rate. The UNC database permits students to be tracked for a period of up to ten years. Since this report is current as of the fall semester of 2000, then only students who began their freshman year in 1990 or earlier can be tracked for a full ten-year period, and only students who began their freshman year in 1996 can be tracked for four years.

The tracking determines the percentage of the cohort that are still enrolled (the retention rate), the percentage that have graduated (the graduation rate), and the percentage that are either still enrolled or have graduated (the persistence rate) as of the fall semester when their status is checked. These rates are calculated once a year for freshman cohorts dating back to 1981 and are displayed in the tables that follow. The data in these tables present rates for freshmen at each UNC institution and for all UNC freshmen taken as a group. Data in the left panels of the each table show the percentages that are either enrolled in or graduated from the institution where they first matriculated. Data in the right panels of each table show the percentages that are *either* enrolled in or graduated from the institution where they first matriculated *or* enrolled in or graduated from any other UNC institution to which they may have transferred following their first matriculation. **All rates in these tables understate the “true rates” of retention, graduation, and persistence because they are “within system” only and do not take account of students who may have transferred to a non-UNC institution (and may have graduated from that institution).**

Retention, Graduation and Persistence Rates of First-Time Full-Time Freshmen At All UNC Institutions  
 Group= All Students (Excludes Ag Inst at NCSU & 4-Year Diploma at NCSA)

Yr of Entry	Number In Class	Original Institution										Any UNC Institution									
		After Year 1	After Year 2	After Year 3	After Year 4	After Year 5	After Year 6	After Year 7	After Year 8	After Year 9	After Year 10	After Year 1	After Year 2	After Year 3	After Year 4	After Year 5	After Year 6	After Year 7	After Year 8	After Year 9	After Year 10
Panel A - Retention																					
1984	19947	78.3	66.2	60.2	30.7	9.0	3.8	1.9	1.6	1.1	0.9	81.0	71.1	65.6	35.3	11.7	5.6	3.3	2.7	2.1	1.7
1985	20593	78.5	66.3	60.9	30.1	9.3	4.0	2.4	1.5	1.0	0.7	81.0	71.2	66.3	34.5	11.9	5.6	3.6	2.5	1.8	1.4
1986	21326	78.6	66.9	61.8	31.8	9.8	4.1	2.3	1.5	1.1	0.7	81.0	71.6	67.1	36.3	12.6	6.0	3.7	2.7	2.0	1.3
1987	21325	81.4	69.6	64.4	33.0	9.6	4.2	2.2	1.3	0.9	0.7	83.7	74.3	69.9	37.8	12.5	6.1	3.7	2.3	1.7	1.4
1988	21626	82.6	71.9	66.4	34.5	9.9	4.0	2.2	1.4	0.9	0.6	85.1	76.9	72.4	39.7	13.0	6.0	3.5	2.5	1.8	1.2
1989	21417	82.4	70.8	65.1	33.6	9.7	3.6	2.1	1.4	1.0	0.6	85.5	76.6	72.0	39.5	13.0	5.8	3.6	2.4	1.7	1.2
1990	20121	81.9	71.4	66.0	33.4	9.1	3.6	2.1	1.2	0.9	0.6	84.9	77.2	72.6	39.0	12.6	5.9	3.5	2.2	1.6	1.1
1991	20117	82.6	71.2	65.4	33.3	9.0	3.5	2.1	1.3	0.9	.	85.1	76.6	71.8	38.8	12.4	5.5	3.5	2.3	1.6	.
1992	20956	81.5	69.5	63.8	31.6	8.5	3.4	1.8	1.1	.	.	84.3	75.2	70.3	37.1	11.7	5.3	3.1	2.1	.	.
1993	20966	81.5	69.5	63.8	30.7	8.4	3.4	1.8	.	.	.	84.5	75.5	70.5	36.4	11.7	5.3	3.1	.	.	.
1994	20960	80.7	68.4	63.1	28.7	7.9	3.2	.	.	.	.	83.4	73.7	69.3	34.0	10.8	4.9	.	.	.	.
1995	21612	80.5	69.2	64.4	29.6	7.6	.	.	.	.	.	83.5	74.9	70.5	34.7	10.4	.	.	.	.	.
1996	21951	80.7	69.4	64.1	28.1	.	.	.	.	.	.	83.9	75.3	70.7	33.3	.	.	.	.	.	.
1997	22795	81.1	70.3	64.9	.	.	.	.	.	.	.	83.9	75.4	70.5	.	.	.	.	.	.	.
1998	23427	80.6	69.1	.	.	.	.	.	.	.	.	83.6	74.5	.	.	.	.	.	.	.	.
1999	24101	80.1	.	.	.	.	.	.	.	.	.	83.2	.	.	.	.	.	.	.	.	.
Panel B - Graduation																					
1984	19947	0.0	0.0	0.4	26.1	46.3	51.5	53.4	54.2	54.7	55.2	0.0	0.0	0.5	27.2	49.2	55.4	57.9	59.0	59.8	60.5
1985	20593	0.0	0.0	0.5	27.5	47.4	52.6	54.4	55.2	55.8	56.2	0.0	0.0	0.6	28.6	50.4	56.6	59.0	60.1	61.0	61.5
1986	21326	0.0	0.0	0.5	26.5	47.8	53.3	55.2	56.2	56.8	57.2	0.0	0.0	0.6	27.6	50.7	57.3	59.7	61.1	62.1	62.7
1987	21325	0.0	0.0	0.5	28.2	50.6	56.1	58.1	59.1	59.5	60.0	0.0	0.0	0.5	29.4	53.7	60.3	62.9	64.3	65.1	65.8
1988	21626	0.0	0.0	0.5	28.9	52.5	58.3	60.2	61.0	61.7	62.1	0.0	0.0	0.5	29.9	55.8	63.0	65.5	66.8	67.7	68.3
1989	21417	0.0	0.0	0.5	28.6	51.5	57.2	58.9	59.7	60.2	60.6	0.0	0.0	0.5	29.9	55.2	62.3	64.7	65.9	66.7	67.3
1990	20121	0.0	0.0	0.6	29.3	51.8	57.5	59.3	60.2	60.8	61.1	0.0	0.0	0.6	30.6	55.5	62.5	65.2	66.6	67.4	68.0
1991	20117	0.0	0.0	0.6	28.8	51.8	57.3	58.9	59.9	60.4	.	0.0	0.0	0.7	29.9	55.2	62.3	64.5	65.9	66.7	.
1992	20956	0.0	0.0	0.7	29.0	51.1	56.2	57.8	58.5	.	.	0.0	0.0	0.7	30.3	54.8	61.2	63.5	64.6	.	.
1993	20966	0.0	0.0	0.7	30.5	51.7	56.5	58.2	.	.	.	0.0	0.0	0.7	31.8	55.5	61.8	64.1	.	.	.
1994	20960	0.0	0.0	0.8	32.1	51.9	56.4	.	.	.	.	0.0	0.0	0.8	33.2	55.3	61.0	.	.	.	.
1995	21612	0.0	0.0	0.7	32.1	52.6	.	.	.	.	.	0.0	0.1	0.8	33.4	56.1	.	.	.	.	.
1996	21951	0.0	0.0	0.8	32.9	.	.	.	.	.	.	0.0	0.0	0.8	34.6	.	.	.	.	.	.
1997	22795	0.0	0.0	0.6	.	.	.	.	.	.	.	0.0	0.0	0.7	.	.	.	.	.	.	.
1998	23427	0.0	0.0	.	.	.	.	.	.	.	.	0.0	0.0	.	.	.	.	.	.	.	.
1999	24101	0.0	.	.	.	.	.	.	.	.	.	0.0	.	.	.	.	.	.	.	.	.
Panel C - Persistence																					
1984	19947	78.3	66.2	60.6	56.8	55.3	55.3	55.4	55.8	55.8	56.0	81.1	71.1	66.1	62.4	60.9	61.1	61.2	61.8	61.9	62.2
1985	20593	78.5	66.3	61.5	57.5	56.7	56.6	56.8	56.7	56.8	56.9	81.0	71.2	66.9	63.0	62.3	62.2	62.6	62.6	62.8	63.0
1986	21326	78.6	66.9	62.3	58.3	57.6	57.5	57.5	57.8	57.9	57.9	81.0	71.6	67.7	63.9	63.3	63.3	63.5	63.9	64.0	64.0
1987	21325	81.4	69.6	64.9	61.2	60.2	60.3	60.3	60.3	60.5	60.7	83.8	74.3	70.4	67.2	66.2	66.4	66.5	66.6	66.7	67.1
1988	21626	82.6	71.9	66.9	63.4	62.4	62.4	62.3	62.5	62.7	62.6	85.1	77.0	72.9	69.7	68.9	68.9	69.0	69.3	69.5	69.5
1989	21417	82.4	70.8	65.7	62.2	61.1	60.7	60.9	61.0	61.1	61.2	85.5	76.6	72.5	69.4	68.2	68.0	68.2	68.3	68.4	68.5
1990	20121	81.9	71.4	66.5	62.7	60.9	61.1	61.4	61.4	61.6	61.7	85.0	77.2	73.2	69.7	68.0	68.4	68.8	68.8	69.0	69.1
1991	20117	82.6	71.2	66.0	62.1	60.8	60.8	61.0	61.2	61.2	.	85.1	76.6	72.5	68.7	67.6	67.7	68.0	68.2	68.2	.
1992	20956	81.5	69.5	64.5	60.7	59.6	59.6	59.7	59.6	.	.	84.3	75.3	71.0	67.4	66.5	66.5	66.7	66.7	.	.
1993	20966	81.5	69.5	64.5	61.3	60.0	59.9	60.0	.	.	.	84.5	75.6	71.2	68.3	67.2	67.1	67.2	.	.	.
1994	20960	80.7	68.4	63.9	60.8	59.8	59.6	.	.	.	.	83.4	73.7	70.1	67.2	66.1	65.9	.	.	.	.
1995	21612	80.5	69.3	65.1	61.8	60.1	.	.	.	.	.	83.5	74.9	71.3	68.1	66.5	.	.	.	.	.
1996	21951	80.7	69.4	64.9	61.0	.	.	.	.	.	.	83.9	75.3	71.5	67.9	.	.	.	.	.	.
1997	22795	81.1	70.3	65.5	.	.	.	.	.	.	.	83.9	75.4	71.1	.	.	.	.	.	.	.
1998	23427	80.6	69.1	.	.	.	.	.	.	.	.	83.6	74.5	.	.	.	.	.	.	.	.
1999	24101	80.1	.	.	.	.	.	.	.	.	.	83.3	.	.	.	.	.	.	.	.	.

Retention, Graduation and Persistence Rates of First-Time Full-Time Freshmen At Appalachian State University  
Group= All Students

Yr of Entry	Number In Class	Original Institution										Any UNC Institution									
		After Year 1	After Year 2	After Year 3	After Year 4	After Year 5	After Year 6	After Year 7	After Year 8	After Year 9	After Year 10	After Year 1	After Year 2	After Year 3	After Year 4	After Year 5	After Year 6	After Year 7	After Year 8	After Year 9	After Year 10
Panel A - Retention																					
1984	1844	78.6	64.4	59.2	30.2	6.4	2.1	1.2	0.9	0.5	0.3	83.4	71.4	66.8	36.2	9.4	4.1	2.7	2.4	1.7	1.2
1985	2066	79.7	66.8	59.8	29.8	7.7	3.3	1.6	1.0	0.3	0.3	82.7	72.8	66.3	35.0	10.8	4.9	3.2	2.2	1.1	0.8
1986	2231	82.8	68.0	63.3	32.2	6.6	2.8	1.7	0.9	0.5	0.4	86.1	74.2	70.3	37.1	9.8	5.2	3.9	2.6	1.7	1.3
1987	2001	84.5	71.8	67.6	33.4	6.4	2.2	1.2	0.4	0.2	0.3	87.7	78.4	75.2	40.0	9.7	3.9	2.1	1.2	0.8	1.1
1988	1833	86.1	74.4	70.1	36.3	6.7	2.4	1.3	0.8	0.5	0.4	88.8	81.1	78.2	42.2	10.0	4.3	2.6	1.6	1.1	0.7
1989	1972	86.7	73.3	66.3	32.5	6.6	2.7	1.4	1.0	0.7	0.5	89.4	79.8	74.5	39.1	10.3	5.1	3.0	2.2	1.4	0.9
1990	1827	86.3	73.5	68.9	34.0	5.6	2.0	1.5	1.1	0.7	0.1	89.5	81.0	77.0	41.0	10.0	4.7	2.8	2.3	1.5	0.5
1991	1886	86.4	73.0	68.0	35.7	7.7	1.9	0.8	0.6	0.4	.	89.1	80.1	76.2	42.5	11.2	4.0	2.2	1.8	1.3	.
1992	2049	85.9	72.2	67.2	35.0	6.1	1.9	1.0	0.7	.	.	88.9	79.6	75.4	42.3	9.9	3.9	2.3	1.9	.	.
1993	1904	85.1	71.2	67.2	34.0	6.8	2.3	0.7	.	.	.	89.2	78.9	76.4	41.6	9.9	3.9	1.8	.	.	.
1994	1963	82.1	68.5	64.5	31.5	6.0	2.5	.	.	.	.	85.8	76.7	73.6	38.6	9.1	4.0	.	.	.	.
1995	2201	83.7	73.0	67.7	32.0	5.5	.	.	.	.	.	87.3	79.8	75.3	38.0	8.5	.	.	.	.	.
1996	2021	82.3	70.4	64.8	28.6	.	.	.	.	.	.	87.6	79.9	74.8	36.0	.	.	.	.	.	.
1997	2159	82.9	71.3	66.1	.	.	.	.	.	.	.	86.9	78.1	73.2	.	.	.	.	.	.	.
1998	2311	81.1	69.8	.	.	.	.	.	.	.	.	85.1	76.6	.	.	.	.	.	.	.	.
1999	2199	84.7	.	.	.	.	.	.	.	.	.	88.1	.	.	.	.	.	.	.	.	.
Panel B - Graduation																					
1984	1844	0.0	0.0	0.9	26.7	49.7	54.1	55.4	55.8	56.2	56.5	0.0	0.0	0.9	28.6	54.2	59.8	61.8	62.6	63.3	64.0
1985	2066	0.0	0.0	1.1	28.2	51.2	56.1	57.7	58.4	59.0	59.2	0.0	0.0	1.2	30.0	55.2	61.3	63.5	64.7	65.8	66.3
1986	2231	0.0	0.0	0.8	29.4	55.0	59.3	60.6	61.2	61.7	61.9	0.0	0.0	0.9	31.3	59.1	64.6	66.6	67.8	69.0	69.4
1987	2001	0.0	0.0	0.4	32.2	58.6	63.4	65.1	65.9	66.3	66.4	0.0	0.0	0.4	34.0	63.5	69.9	72.3	73.3	73.8	74.0
1988	1833	0.0	0.0	0.3	32.5	61.9	66.2	67.6	68.4	68.7	69.0	0.0	0.0	0.3	34.8	66.9	72.8	75.1	76.1	76.6	77.1
1989	1972	0.0	0.0	0.4	30.5	56.9	60.8	62.6	63.3	63.6	63.9	0.0	0.0	0.4	32.8	62.6	68.0	70.6	71.7	72.4	72.9
1990	1827	0.0	0.1	0.7	33.2	58.7	63.4	64.5	65.1	65.5	66.0	0.0	0.1	0.7	35.0	63.8	70.1	72.5	73.4	74.3	75.2
1991	1886	0.0	0.0	0.4	29.6	57.0	62.6	63.7	64.1	64.4	.	0.0	0.0	0.6	31.5	61.8	69.1	71.1	72.0	72.4	.
1992	2049	0.0	0.0	0.6	30.3	57.7	62.1	63.4	64.0	.	.	0.0	0.0	0.7	32.4	63.2	69.1	71.1	72.1	.	.
1993	1904	0.0	0.0	0.4	31.6	58.0	62.3	63.9	.	.	.	0.0	0.0	0.4	33.5	63.7	69.6	71.8	.	.	.
1994	1963	0.0	0.0	0.7	31.2	55.5	59.5	.	.	.	.	0.0	0.0	0.7	33.5	61.8	67.2	.	.	.	.
1995	2201	0.0	0.0	1.0	34.0	58.9	.	.	.	.	.	0.0	0.0	1.0	35.8	63.8	.	.	.	.	.
1996	2021	0.0	0.0	1.5	34.1	.	.	.	.	.	.	0.0	0.0	1.6	37.0	.	.	.	.	.	.
1997	2159	0.0	0.0	0.8	.	.	.	.	.	.	.	0.0	0.0	1.0	.	.	.	.	.	.	.
1998	2311	0.0	0.0	.	.	.	.	.	.	.	.	0.0	0.0	.	.	.	.	.	.	.	.
1999	2199	0.0	.	.	.	.	.	.	.	.	.	0.0	.	.	.	.	.	.	.	.	.
Panel C - Persistence																					
1984	1844	78.6	64.4	60.1	56.9	56.1	56.2	56.6	56.7	56.8	56.7	83.4	71.4	67.7	64.8	63.7	63.9	64.4	65.1	65.0	65.2
1985	2066	79.7	66.8	60.9	58.0	58.9	59.4	59.4	59.4	59.3	59.5	82.7	72.8	67.5	65.0	66.0	66.2	66.7	66.9	66.9	67.1
1986	2231	82.8	68.0	64.1	61.7	61.6	62.0	62.3	62.1	62.2	62.3	86.1	74.3	71.1	68.4	68.9	69.8	70.4	70.4	70.8	70.8
1987	2001	84.5	71.9	68.1	65.6	65.0	65.7	66.3	66.3	66.5	66.7	87.7	78.4	75.6	74.1	73.2	73.8	74.4	74.5	74.6	75.2
1988	1833	86.1	74.4	70.4	68.8	68.6	68.6	69.0	69.2	69.2	69.3	88.8	81.1	78.5	77.0	76.9	77.1	77.6	77.7	77.7	78.8
1989	1972	86.7	73.3	66.7	63.0	63.5	63.5	64.0	64.3	64.4	64.5	89.4	79.8	74.9	71.9	73.0	73.0	73.6	73.9	73.8	73.8
1990	1827	86.3	73.5	69.6	67.2	64.4	65.4	66.0	66.2	66.2	66.1	89.5	81.1	77.7	76.0	73.8	74.8	75.3	75.7	75.8	75.7
1991	1886	86.4	73.0	68.5	65.3	64.7	64.5	64.5	64.7	64.8	.	89.1	80.1	76.8	74.0	73.1	73.1	73.3	73.8	73.8	.
1992	2049	85.9	72.2	67.8	65.3	63.8	64.0	64.4	64.7	.	.	88.9	79.6	76.1	74.7	73.0	73.0	73.4	74.0	.	.
1993	1904	85.1	71.2	67.6	65.7	64.9	64.5	64.6	.	.	.	89.2	78.9	76.8	75.1	73.6	73.6	73.6	.	.	.
1994	1963	82.1	68.5	65.2	62.7	61.5	62.0	.	.	.	.	85.8	76.7	74.3	72.1	70.9	71.2	.	.	.	.
1995	2201	83.7	73.0	68.7	66.0	64.4	.	.	.	.	.	87.3	79.8	76.4	73.9	72.3	.	.	.	.	.
1996	2021	82.3	70.4	66.3	62.7	.	.	.	.	.	.	87.6	80.0	76.3	72.9	.	.	.	.	.	.
1997	2159	82.9	71.3	66.9	.	.	.	.	.	.	.	86.9	78.2	74.2	.	.	.	.	.	.	.
1998	2311	81.1	69.8	.	.	.	.	.	.	.	.	85.1	76.6	.	.	.	.	.	.	.	.
1999	2199	84.7	.	.	.	.	.	.	.	.	.	88.1	.	.	.	.	.	.	.	.	.

Retention, Graduation and Persistence Rates of First-Time Full-Time Freshmen At East Carolina University  
 Group= All Students

Yr of Entry	Number In Class	Original Institution										Any UNC Institution									
		After Year 1	After Year 2	After Year 3	After Year 4	After Year 5	After Year 6	After Year 7	After Year 8	After Year 9	After Year 10	After Year 1	After Year 2	After Year 3	After Year 4	After Year 5	After Year 6	After Year 7	After Year 8	After Year 9	After Year 10
Panel A - Retention																					
1984	2656	75.0	60.1	53.2	33.2	10.3	4.6	1.7	1.9	1.3	0.8	77.8	65.9	59.0	38.1	13.9	7.1	3.5	3.2	2.6	2.1
1985	2664	75.3	60.8	55.2	33.6	11.4	4.3	2.2	1.8	1.0	0.7	78.3	66.9	61.4	38.3	14.2	5.9	3.6	3.1	2.1	1.4
1986	2652	75.8	63.9	58.2	36.0	11.7	4.9	2.5	1.5	1.3	0.9	78.8	69.2	64.4	41.5	15.0	7.0	4.2	2.9	2.5	1.7
1987	2740	77.0	64.3	59.0	37.0	12.3	5.1	2.6	1.6	1.6	1.1	79.2	69.0	64.9	42.4	15.7	7.3	4.3	2.7	2.4	1.8
1988	2981	76.9	65.1	57.9	39.1	12.3	5.1	2.8	1.9	1.2	0.6	79.8	70.5	64.5	45.0	16.1	7.9	4.5	3.4	2.4	1.3
1989	2624	78.7	64.8	58.7	37.5	12.0	3.6	2.2	1.8	1.3	1.0	82.0	71.4	66.5	44.3	16.0	6.3	4.1	2.6	2.0	1.6
1990	2637	77.2	66.4	59.5	38.3	11.5	3.9	2.5	1.5	1.1	0.4	80.2	71.0	65.8	44.0	15.7	6.6	3.9	2.5	1.7	0.8
1991	2333	77.6	64.1	56.9	37.0	9.9	3.8	1.9	1.3	1.2	.	79.8	68.7	62.3	42.4	14.4	6.3	3.6	2.6	2.1	.
1992	2860	77.4	63.2	56.7	33.8	9.7	3.5	2.1	1.4	.	.	80.4	68.8	63.8	40.0	12.8	5.2	3.5	2.4	.	.
1993	2429	76.8	63.8	58.2	32.0	10.3	4.2	2.3	.	.	.	80.6	71.4	66.7	39.2	14.8	7.0	4.1	.	.	.
1994	2360	77.4	65.2	59.8	33.6	9.7	3.0	.	.	.	.	80.2	70.1	66.5	39.7	13.1	4.7	.	.	.	.
1995	2637	77.1	65.0	59.7	32.5	8.2	.	.	.	.	.	79.9	70.3	65.8	38.0	11.3	.	.	.	.	.
1996	2628	77.7	66.6	60.8	30.3	.	.	.	.	.	.	80.8	72.4	67.1	35.4	.	.	.	.	.	.
1997	2874	78.2	66.6	59.7	.	.	.	.	.	.	.	80.9	71.8	66.4	.	.	.	.	.	.	.
1998	2805	79.0	66.3	.	.	.	.	.	.	.	.	81.8	72.0	.	.	.	.	.	.	.	.
1999	3257	76.4	.	.	.	.	.	.	.	.	.	79.8	.	.	.	.	.	.	.	.	.
Panel B - Graduation																					
1984	2656	0.0	0.0	0.5	17.5	38.4	44.8	47.4	48.0	48.5	49.2	0.0	0.0	0.5	18.6	41.2	48.6	52.0	53.1	53.9	54.7
1985	2664	0.0	0.0	0.3	19.3	40.9	48.0	50.0	50.6	51.2	51.6	0.0	0.0	0.3	20.6	44.5	52.5	55.0	55.9	56.8	57.4
1986	2652	0.0	0.0	0.3	19.0	42.4	49.5	51.8	52.9	53.3	53.8	0.0	0.0	0.4	19.9	45.9	54.0	56.9	58.7	59.4	60.1
1987	2740	0.0	0.0	0.1	18.1	41.6	48.9	50.9	52.6	53.0	53.7	0.0	0.0	0.2	19.1	44.5	53.1	55.5	57.8	58.7	59.6
1988	2981	0.0	0.0	0.1	15.8	41.5	48.8	51.1	52.1	52.9	53.3	0.0	0.0	0.1	16.6	44.5	53.3	56.7	58.3	59.3	60.2
1989	2624	0.0	0.0	0.3	17.7	41.1	49.0	51.0	51.8	52.2	52.7	0.0	0.0	0.3	18.7	44.7	54.2	57.2	58.7	59.5	60.1
1990	2637	0.0	0.0	0.2	16.5	41.1	49.1	51.8	52.6	53.2	53.8	0.0	0.0	0.2	17.1	43.7	53.1	57.1	58.3	59.3	60.0
1991	2333	0.0	0.0	0.4	16.5	40.9	48.1	50.0	50.9	51.2	.	0.0	0.0	0.5	17.2	43.2	52.3	55.4	56.8	57.5	.
1992	2860	0.0	0.0	0.4	19.4	43.0	49.0	51.0	51.6	.	.	0.0	0.0	0.4	20.5	47.3	54.4	57.1	58.2	.	.
1993	2429	0.0	0.0	0.3	22.9	44.0	50.2	52.2	.	.	.	0.0	0.0	0.4	24.3	48.6	56.6	59.8	.	.	.
1994	2360	0.0	0.0	0.3	21.9	44.9	51.1	.	.	.	.	0.0	0.0	0.3	22.9	48.3	56.1	.	.	.	.
1995	2637	0.0	0.0	0.6	23.9	46.5	.	.	.	.	.	0.0	0.0	0.6	24.9	50.1	.	.	.	.	.
1996	2628	0.0	0.0	0.6	25.6	.	.	.	.	.	.	0.0	0.0	0.7	27.2	.	.	.	.	.	.
1997	2874	0.0	0.0	0.3	.	.	.	.	.	.	.	0.0	0.0	0.4	.	.	.	.	.	.	.
1998	2805	0.0	0.0	.	.	.	.	.	.	.	.	0.0	0.0	.	.	.	.	.	.	.	.
1999	3257	0.0	.	.	.	.	.	.	.	.	.	0.0	.	.	.	.	.	.	.	.	.
Panel C - Persistence																					
1984	2656	75.0	60.1	53.6	50.7	48.8	49.3	49.1	49.9	49.8	50.0	77.8	65.9	59.5	56.7	55.0	55.7	55.5	56.3	56.5	56.8
1985	2664	75.3	60.8	55.5	52.9	52.4	52.3	52.2	52.4	52.2	52.3	78.3	66.9	61.8	58.9	58.7	58.4	58.7	59.0	58.9	58.8
1986	2652	75.8	63.9	58.4	55.1	54.1	54.3	54.2	54.4	54.6	54.7	78.8	69.2	64.8	61.5	60.8	61.0	61.2	61.6	61.9	61.9
1987	2740	77.0	64.3	59.2	55.2	53.9	54.0	53.5	54.1	54.6	54.9	79.2	69.0	65.1	61.5	60.1	60.4	59.8	60.5	61.1	61.4
1988	2981	76.9	65.1	58.0	54.8	53.8	53.9	53.9	54.0	54.1	54.0	79.8	70.5	64.6	61.6	60.7	61.2	61.2	61.7	61.7	61.6
1989	2624	78.7	64.8	59.0	55.2	53.1	52.6	53.2	53.5	53.6	53.7	82.0	71.4	66.7	63.0	60.7	60.4	61.3	61.2	61.4	61.6
1990	2637	77.2	66.4	59.7	54.8	52.6	53.0	54.3	54.1	54.3	54.2	80.2	71.0	66.0	61.1	59.4	59.7	61.1	60.8	61.1	60.8
1991	2333	77.6	64.1	57.3	53.5	50.8	51.9	52.0	52.2	52.4	.	79.8	68.7	62.8	59.6	57.7	58.6	59.0	59.4	59.7	.
1992	2860	77.4	63.2	57.1	53.2	52.7	52.5	53.1	53.0	.	.	80.4	68.8	64.3	60.5	60.1	59.7	60.6	60.6	.	.
1993	2429	76.8	63.8	58.5	54.9	54.3	54.3	54.5	.	.	.	80.6	71.4	67.1	63.6	63.4	63.6	63.9	.	.	.
1994	2360	77.4	65.2	60.1	55.6	54.6	54.0	.	.	.	.	80.2	70.2	66.9	62.6	61.4	60.7	.	.	.	.
1995	2637	77.1	65.0	60.3	56.4	54.8	.	.	.	.	.	79.9	70.3	66.4	63.0	61.3	.	.	.	.	.
1996	2628	77.7	66.6	61.4	55.9	.	.	.	.	.	.	80.8	72.4	67.8	62.6	.	.	.	.	.	.
1997	2874	78.2	66.6	60.0	.	.	.	.	.	.	.	80.9	71.8	66.8	.	.	.	.	.	.	.
1998	2805	79.0	66.3	.	.	.	.	.	.	.	.	81.8	72.1	.	.	.	.	.	.	.	.
1999	3257	76.4	.	.	.	.	.	.	.	.	.	79.8	.	.	.	.	.	.	.	.	.

Retention, Graduation and Persistence Rates of First-Time Full-Time Freshmen At Elizabeth City State University  
 Group= All Students

Yr of Entry	Number In Class	Original Institution										Any UNC Institution									
		After Year 1	After Year 2	After Year 3	After Year 4	After Year 5	After Year 6	After Year 7	After Year 8	After Year 9	After Year 10	After Year 1	After Year 2	After Year 3	After Year 4	After Year 5	After Year 6	After Year 7	After Year 8	After Year 9	After Year 10
<b>Panel A - Retention</b>																					
1984	379	62.3	53.8	44.3	14.0	4.2	1.1	1.3	0.8	0.8	1.3	65.4	57.3	47.2	15.0	5.5	1.6	1.8	1.8	0.8	1.3
1985	408	58.1	45.6	40.7	13.7	4.2	1.5	1.2	1.2	0.7	0.5	59.8	47.3	41.4	14.0	4.7	2.0	2.0	2.2	1.7	1.5
1986	426	62.2	52.6	47.2	24.4	6.6	2.8	1.2	0.2	0.5	0.5	64.6	57.0	50.7	26.8	8.5	3.8	1.9	0.7	1.2	0.9
1987	405	73.8	61.5	53.8	17.5	4.4	3.0	1.0	0.5	0.5	1.0	74.3	63.5	54.8	19.3	5.7	3.7	1.7	1.0	1.0	2.0
1988	433	73.2	60.7	55.2	17.3	5.1	2.8	0.7	0.9	0.7	0.5	75.3	63.7	58.7	20.8	6.7	4.4	2.3	2.1	1.2	1.2
1989	339	76.7	63.1	59.3	23.3	6.2	4.1	1.8	0.6	0.6	0.3	78.5	66.7	63.4	25.7	6.5	4.4	2.7	0.9	0.9	0.6
1990	307	73.0	60.6	54.4	15.0	2.6	2.3	1.3	1.0	1.3	1.3	73.9	63.8	58.0	17.9	4.6	3.6	2.3	1.3	2.0	1.6
1991	402	77.9	65.4	58.7	19.4	6.0	3.2	1.7	1.2	0.7	.	79.9	69.2	63.4	23.6	10.0	5.0	2.5	1.7	1.7	.
1992	540	77.2	65.2	57.4	20.7	5.9	3.0	1.5	1.1	.	.	79.8	69.3	61.5	25.2	8.3	4.6	2.8	2.2	.	.
1993	459	73.9	57.7	51.4	12.4	3.7	2.6	1.5	.	.	.	78.9	64.1	59.3	19.0	8.7	4.8	3.3	.	.	.
1994	391	66.8	55.8	55.5	14.1	5.9	1.0	.	.	.	.	70.3	61.6	60.1	17.6	7.7	2.0	.	.	.	.
1995	381	77.4	65.6	60.1	16.5	3.7	.	.	.	.	.	81.1	70.9	66.7	21.3	6.8	.	.	.	.	.
1996	379	75.2	63.6	60.4	23.2	.	.	.	.	.	.	77.0	67.8	64.1	26.1	.	.	.	.	.	.
1997	424	76.4	65.6	59.9	.	.	.	.	.	.	.	78.3	70.5	63.4	.	.	.	.	.	.	.
1998	377	72.9	60.2	.	.	.	.	.	.	.	.	76.4	63.1	.	.	.	.	.	.	.	.
1999	401	77.3	.	.	.	.	.	.	.	.	.	79.3	.	.	.	.	.	.	.	.	.
<b>Panel B - Graduation</b>																					
1984	379	0.0	0.0	0.3	28.0	36.9	38.5	39.1	39.6	40.1	40.4	0.0	0.0	0.3	28.2	37.5	39.1	40.4	40.9	41.7	42.0
1985	408	0.0	0.0	0.5	24.8	31.6	33.8	34.3	34.3	34.8	35.0	0.0	0.0	0.5	24.8	31.6	34.1	34.8	34.8	35.3	35.8
1986	426	0.0	0.0	0.0	20.2	35.4	38.3	39.4	40.6	40.8	40.8	0.0	0.0	0.0	20.7	36.2	39.4	40.8	42.3	42.5	42.7
1987	405	0.0	0.0	0.5	35.6	48.4	49.4	49.9	50.1	50.4	50.6	0.0	0.0	0.5	35.6	48.6	50.1	50.9	51.4	51.9	52.3
1988	433	0.0	0.0	0.9	34.6	44.8	47.3	48.7	49.0	49.4	49.9	0.0	0.2	1.2	35.1	46.9	49.9	51.3	51.7	52.7	53.3
1989	339	0.0	0.0	0.3	31.9	45.1	47.2	48.7	49.6	49.9	49.9	0.0	0.0	0.3	32.2	47.5	49.9	51.3	52.2	52.5	52.5
1990	307	0.0	0.0	0.3	37.1	47.2	48.2	49.5	49.5	50.5	50.8	0.0	0.0	0.3	37.5	49.2	50.8	53.1	53.4	54.4	55.0
1991	402	0.0	0.0	0.2	33.6	45.8	48.5	49.8	50.7	51.2	.	0.0	0.0	0.2	34.1	47.0	51.2	53.5	54.7	55.2	.
1992	540	0.0	0.0	0.0	33.1	46.3	48.9	50.6	50.9	.	.	0.0	0.0	0.2	33.7	48.1	51.5	53.3	53.7	.	.
1993	459	0.0	0.0	0.0	35.5	42.9	44.4	45.5	.	.	.	0.0	0.0	0.0	36.6	46.0	49.2	51.4	.	.	.
1994	391	0.0	0.0	0.3	38.4	46.8	49.6	.	.	.	.	0.0	0.0	0.3	38.9	49.1	53.2	.	.	.	.
1995	381	0.0	0.0	0.0	42.5	53.8	.	.	.	.	.	0.0	0.0	0.0	43.3	55.9	.	.	.	.	.
1996	379	0.0	0.0	0.8	34.0	.	.	.	.	.	.	0.0	0.0	0.8	34.8	.	.	.	.	.	.
1997	424	0.0	0.0	0.0	.	.	.	.	.	.	.	0.0	0.0	0.0	.	.	.	.	.	.	.
1998	377	0.0	0.0	.	.	.	.	.	.	.	.	0.0	0.0	.	.	.	.	.	.	.	.
1999	401	0.0	.	.	.	.	.	.	.	.	.	0.0	.	.	.	.	.	.	.	.	.
<b>Panel C - Persistence</b>																					
1984	379	62.3	53.8	44.6	42.0	41.2	39.6	40.4	40.4	40.9	41.7	65.4	57.3	47.5	43.3	43.0	40.6	42.2	42.7	42.5	43.3
1985	408	58.1	45.6	41.2	38.5	35.8	35.3	35.5	35.5	35.5	35.5	59.8	47.3	41.9	38.7	36.3	36.0	36.8	37.0	37.0	37.3
1986	426	62.2	52.6	47.2	44.6	42.0	41.1	40.6	40.8	41.3	41.3	64.6	57.0	50.7	47.4	44.6	43.2	42.7	43.0	43.7	43.7
1987	405	73.8	61.5	54.3	53.1	52.8	52.3	50.9	50.6	50.9	51.6	74.3	63.5	55.3	54.8	54.3	53.8	52.6	52.3	52.8	54.3
1988	433	73.2	60.7	56.1	52.0	49.9	50.1	49.4	49.9	50.1	50.3	75.3	64.0	59.8	55.9	53.6	54.3	53.6	53.8	53.8	54.5
1989	339	76.7	63.1	59.6	55.2	51.3	51.3	50.4	50.1	50.4	50.1	78.5	66.7	63.7	57.8	54.0	54.3	54.0	53.1	53.4	53.1
1990	307	73.0	60.6	54.7	52.1	49.8	50.5	50.8	50.5	51.8	52.1	73.9	63.8	58.3	55.4	53.7	54.4	55.4	54.7	56.4	56.7
1991	402	77.9	65.4	59.0	53.0	51.7	51.7	51.5	52.0	52.0	.	79.9	69.2	63.7	57.7	57.0	56.2	56.0	56.5	57.0	.
1992	540	77.2	65.2	57.4	53.9	52.2	51.9	52.0	52.0	.	.	79.8	69.3	61.7	58.9	56.5	56.1	56.1	55.9	.	.
1993	459	73.9	57.7	51.4	47.9	46.6	47.1	47.1	.	.	.	78.9	64.1	59.3	55.6	54.7	54.0	54.7	.	.	.
1994	391	66.8	55.8	55.8	52.4	52.7	50.6	.	.	.	.	70.3	61.6	60.4	56.5	56.8	55.2	.	.	.	.
1995	381	77.4	65.6	60.1	59.1	57.5	.	.	.	.	.	81.1	70.9	66.7	64.6	62.7	.	.	.	.	.
1996	379	75.2	63.6	61.2	57.3	.	.	.	.	.	.	77.0	67.8	64.9	60.9	.	.	.	.	.	.
1997	424	76.4	65.6	59.9	.	.	.	.	.	.	.	78.3	70.5	63.4	.	.	.	.	.	.	.
1998	377	72.9	60.2	.	.	.	.	.	.	.	.	76.4	63.1	.	.	.	.	.	.	.	.
1999	401	77.3	.	.	.	.	.	.	.	.	.	79.3	.	.	.	.	.	.	.	.	.

Retention, Graduation and Persistence Rates of First-Time Full-Time Freshmen At Fayetteville State University  
 Group= All Students

Yr of Entry	Number In Class	Original Institution										Any UNC Institution									
		After Year 1	After Year 2	After Year 3	After Year 4	After Year 5	After Year 6	After Year 7	After Year 8	After Year 9	After Year 10	After Year 1	After Year 2	After Year 3	After Year 4	After Year 5	After Year 6	After Year 7	After Year 8	After Year 9	After Year 10
Panel A - Retention																					
1984	516	63.0	43.6	30.8	15.9	5.0	2.9	1.0	1.6	1.2	0.6	64.7	47.3	34.5	18.4	6.8	4.3	1.7	1.9	2.3	1.0
1985	637	54.3	35.9	28.6	15.7	6.4	3.3	2.5	1.7	1.1	0.6	57.5	39.6	32.5	18.8	8.6	4.2	3.3	2.2	1.1	0.8
1986	586	57.5	39.2	33.8	22.4	8.5	4.1	2.7	1.9	1.9	1.0	60.2	42.3	36.9	25.1	10.2	4.9	3.6	2.4	2.4	1.5
1987	464	56.0	37.3	31.5	22.2	10.6	3.9	2.4	1.7	0.9	0.2	59.1	40.1	34.5	25.2	12.1	5.4	3.7	2.2	1.7	1.3
1988	423	74.7	58.9	52.7	35.7	12.8	6.6	3.5	2.4	0.7	0.5	76.8	62.2	55.6	38.8	14.4	8.0	5.2	3.1	2.4	2.1
1989	526	69.2	53.8	45.4	32.9	12.9	4.8	2.5	1.1	0.6	1.0	73.4	60.5	50.4	37.1	15.6	7.0	3.4	2.7	1.5	1.5
1990	393	72.3	59.0	50.4	29.3	12.7	5.6	2.3	1.0	1.0	0.5	76.1	65.4	56.2	34.1	16.3	7.9	4.3	1.5	1.5	1.0
1991	440	77.5	63.0	55.2	30.7	10.7	4.3	2.3	2.5	1.8	.	79.8	68.0	60.5	35.9	14.1	6.8	4.3	3.6	2.5	.
1992	345	74.8	59.4	51.6	27.2	8.7	3.5	2.9	0.9	.	.	79.4	65.5	56.8	31.9	12.8	5.8	4.6	1.4	.	.
1993	444	72.5	57.0	47.5	29.3	8.3	4.7	2.3	.	.	.	78.6	64.2	54.1	34.5	10.4	5.4	3.2	.	.	.
1994	443	64.6	50.8	41.1	21.2	7.4	3.2	.	.	.	.	67.5	54.4	45.4	25.3	10.2	5.9	.	.	.	.
1995	380	69.7	51.6	47.4	27.9	8.9	.	.	.	.	.	71.8	57.6	51.6	31.8	12.6	.	.	.	.	.
1996	587	71.2	55.7	46.3	18.2	.	.	.	.	.	.	73.8	60.8	50.9	23.2	.	.	.	.	.	.
1997	511	72.8	57.5	48.1	.	.	.	.	.	.	.	76.5	62.4	52.4	.	.	.	.	.	.	.
1998	519	74.2	54.9	.	.	.	.	.	.	.	.	77.3	59.3	.	.	.	.	.	.	.	.
1999	799	72.6	.	.	.	.	.	.	.	.	.	75.2	.	.	.	.	.	.	.	.	.
Panel B - Graduation																					
1984	516	0.0	0.0	1.0	6.8	14.5	16.5	18.0	18.8	19.4	20.0	0.0	0.0	1.0	7.6	16.5	19.0	20.9	22.1	22.7	23.6
1985	637	0.0	0.0	0.2	6.3	12.1	14.3	15.5	16.2	16.3	16.8	0.0	0.0	0.2	6.6	13.5	16.2	17.9	18.8	19.2	19.6
1986	586	0.0	0.0	0.2	6.1	17.6	21.3	23.0	24.2	24.6	25.1	0.0	0.0	0.2	6.3	18.9	23.4	25.4	26.8	27.1	27.6
1987	464	0.0	0.0	0.2	7.3	14.7	20.9	22.0	23.3	23.5	24.1	0.0	0.0	0.2	7.5	15.5	22.2	23.7	25.4	25.9	26.5
1988	423	0.0	0.0	0.2	11.1	31.0	36.4	37.8	39.0	40.4	41.1	0.0	0.0	0.2	11.3	31.9	37.6	39.2	41.1	42.6	43.3
1989	526	0.0	0.0	0.0	10.3	25.3	33.1	35.4	36.5	37.3	37.5	0.0	0.0	0.0	10.5	26.4	35.2	38.0	39.2	40.3	40.7
1990	393	0.0	0.0	0.0	14.2	28.2	34.9	38.4	38.7	39.2	39.2	0.0	0.0	0.0	15.5	30.8	38.7	43.3	44.3	44.8	45.0
1991	440	0.0	0.0	0.9	19.5	37.5	43.2	45.2	46.1	46.1	.	0.0	0.0	0.9	19.8	39.3	46.1	48.6	50.0	50.7	.
1992	345	0.0	0.0	1.4	17.7	33.6	38.3	39.1	40.3	.	.	0.0	0.0	1.4	18.3	34.5	40.0	41.4	43.8	.	.
1993	444	0.0	0.0	0.5	14.2	30.6	34.7	36.9	.	.	.	0.0	0.0	0.5	14.6	33.3	38.1	40.8	.	.	.
1994	443	0.0	0.0	0.7	16.0	29.6	33.0	.	.	.	.	0.0	0.0	0.7	16.3	30.2	33.9	.	.	.	.
1995	380	0.0	0.0	0.3	14.2	31.8	.	.	.	.	.	0.0	0.0	0.3	14.5	32.4	.	.	.	.	.
1996	587	0.0	0.0	0.5	23.0	.	.	.	.	.	.	0.0	0.0	0.9	23.7	.	.	.	.	.	.
1997	511	0.0	0.0	0.8	.	.	.	.	.	.	.	0.0	0.0	0.8	.	.	.	.	.	.	.
1998	519	0.0	0.0	.	.	.	.	.	.	.	.	0.0	0.0	.	.	.	.	.	.	.	.
1999	799	0.0	.	.	.	.	.	.	.	.	.	0.0	.	.	.	.	.	.	.	.	.
Panel C - Persistence																					
1984	516	63.0	43.6	31.8	22.7	19.6	19.4	19.0	20.3	20.5	20.5	64.7	47.3	35.5	26.0	23.3	23.3	22.7	24.0	25.0	24.6
1985	637	54.3	35.9	28.7	22.0	18.5	17.6	18.1	17.9	17.4	17.4	57.5	39.6	32.7	25.4	22.1	20.4	21.2	21.0	20.3	20.4
1986	586	57.5	39.2	34.0	28.5	26.1	25.4	25.8	26.1	26.5	26.1	60.2	42.3	37.0	31.4	29.2	28.3	29.0	29.2	29.5	29.2
1987	464	56.0	37.3	31.7	29.5	25.2	24.8	24.4	25.0	24.4	24.4	59.1	40.1	34.7	32.8	27.6	27.6	27.4	27.6	27.6	27.8
1988	423	74.7	58.9	53.0	46.8	43.7	43.0	41.4	41.4	41.1	41.6	76.8	62.2	55.8	50.1	46.3	45.6	44.4	44.2	44.9	45.4
1989	526	69.2	53.8	45.4	43.2	38.2	37.8	37.8	37.6	37.8	38.4	73.4	60.5	50.4	47.5	42.0	42.2	41.4	41.8	41.8	42.2
1990	393	72.3	59.0	50.4	43.5	41.0	40.5	40.7	39.7	40.2	39.7	76.1	65.4	56.2	49.6	47.1	46.6	47.6	45.8	46.3	46.1
1991	440	77.5	63.0	56.1	50.2	48.2	47.5	47.5	48.6	48.0	.	79.8	68.0	61.4	55.7	53.4	53.0	53.0	53.6	53.2	.
1992	345	74.8	59.4	53.0	44.9	42.3	41.7	42.0	41.2	.	.	79.4	65.5	58.3	50.1	47.2	45.8	46.1	45.2	.	.
1993	444	72.5	57.0	48.0	43.5	39.0	39.4	39.2	.	.	.	78.6	64.2	54.5	49.1	43.7	43.5	43.9	.	.	.
1994	443	64.6	50.8	41.8	37.2	37.0	36.1	.	.	.	.	67.5	54.4	46.0	41.5	40.4	39.7	.	.	.	.
1995	380	69.7	51.6	47.6	42.1	40.8	.	.	.	.	.	71.8	57.6	51.8	46.3	45.0	.	.	.	.	.
1996	587	71.2	55.7	46.8	41.2	.	.	.	.	.	.	73.8	60.8	51.8	46.8	.	.	.	.	.	.
1997	511	72.8	57.5	48.9	.	.	.	.	.	.	.	76.5	62.4	53.2	.	.	.	.	.	.	.
1998	519	74.2	54.9	.	.	.	.	.	.	.	.	77.3	59.3	.	.	.	.	.	.	.	.
1999	799	72.6	.	.	.	.	.	.	.	.	.	75.2	.	.	.	.	.	.	.	.	.

Retention, Graduation and Persistence Rates of First-Time Full-Time Freshmen At N. C. A. & T. State University  
 Group= All Students

Yr of Entry	Number In Class	Original Institution										Any UNC Institution									
		After Year 1	After Year 2	After Year 3	After Year 4	After Year 5	After Year 6	After Year 7	After Year 8	After Year 9	After Year 10	After Year 1	After Year 2	After Year 3	After Year 4	After Year 5	After Year 6	After Year 7	After Year 8	After Year 9	After Year 10
Panel A - Retention																					
1984	1037	71.9	63.5	55.3	33.3	15.0	5.9	3.0	2.3	1.5	1.0	73.3	66.1	57.9	35.2	16.7	7.3	4.0	3.3	2.6	1.7
1985	1190	70.3	58.4	52.4	32.9	12.7	6.6	3.8	2.9	1.8	1.3	71.6	60.6	54.6	34.9	14.2	7.7	4.9	3.8	2.6	2.2
1986	1227	75.2	62.8	57.2	37.7	17.2	7.9	3.6	2.5	2.0	1.2	76.7	65.0	59.5	40.1	19.6	9.9	5.3	3.7	3.2	2.0
1987	1200	78.7	66.8	59.0	38.3	13.9	7.1	3.4	1.8	1.0	0.9	80.0	69.9	61.6	41.3	16.2	8.9	5.6	3.2	2.4	1.8
1988	1078	78.8	64.1	58.5	37.0	16.3	8.6	4.5	3.0	2.0	1.1	80.1	67.0	62.2	41.0	19.3	11.2	6.9	4.5	3.7	2.4
1989	1120	78.2	66.7	58.3	37.2	16.3	6.3	4.5	3.2	1.8	1.1	80.4	69.1	61.4	40.7	18.8	8.8	6.3	4.8	3.5	2.1
1990	1059	78.7	68.6	63.0	41.5	15.6	7.1	3.9	2.1	1.3	1.1	80.0	71.8	66.9	45.0	19.1	9.9	6.6	4.2	3.1	1.9
1991	1469	76.1	66.4	59.9	35.6	12.7	5.4	3.4	2.1	1.3	.	78.8	70.6	64.3	40.2	16.3	8.4	5.7	4.1	2.8	.
1992	1484	75.7	65.6	58.6	33.8	12.5	5.3	2.9	1.9	.	.	77.5	68.5	62.3	37.2	15.7	8.4	5.1	3.4	.	.
1993	1429	74.9	63.0	56.1	32.8	9.4	4.3	2.4	.	.	.	76.8	67.3	60.5	36.9	12.7	7.1	4.1	.	.	.
1994	1332	74.1	61.8	57.6	29.7	10.1	5.7	.	.	.	.	76.7	64.8	61.8	33.7	12.7	7.5	.	.	.	.
1995	1396	74.1	61.1	57.1	29.0	9.1	.	.	.	.	.	75.8	64.4	60.7	32.3	11.7	.	.	.	.	.
1996	1313	75.0	62.5	56.2	28.0	.	.	.	.	.	.	77.3	66.5	60.6	32.2	.	.	.	.	.	.
1997	1381	76.7	65.8	59.7	.	.	.	.	.	.	.	79.9	69.2	63.7	.	.	.	.	.	.	.
1998	1365	75.5	61.8	.	.	.	.	.	.	.	.	77.7	65.6	.	.	.	.	.	.	.	.
1999	1530	72.3	.	.	.	.	.	.	.	.	.	74.6	.	.	.	.	.	.	.	.	.
Panel B - Graduation																					
1984	1037	0.0	0.0	0.0	16.7	30.8	37.3	40.2	41.3	41.9	42.2	0.0	0.0	0.0	16.9	31.2	38.3	41.6	42.9	43.6	44.5
1985	1190	0.0	0.0	0.3	14.0	30.3	35.2	38.0	39.0	40.2	40.3	0.0	0.0	0.3	14.2	30.8	36.3	39.4	40.6	42.0	42.2
1986	1227	0.0	0.0	0.1	11.6	29.7	37.7	40.7	42.1	42.4	43.0	0.0	0.0	0.1	11.7	30.2	39.0	42.4	44.0	44.5	45.2
1987	1200	0.0	0.0	0.3	17.6	36.4	44.3	46.9	48.0	48.7	49.2	0.0	0.0	0.3	17.9	37.4	45.4	48.5	50.1	51.1	52.0
1988	1078	0.0	0.0	0.0	16.1	35.1	40.9	43.9	45.5	46.7	47.2	0.0	0.0	0.0	16.2	36.3	42.8	46.4	48.6	50.0	51.0
1989	1120	0.0	0.0	0.2	19.0	35.7	44.0	46.9	47.8	48.6	49.2	0.0	0.0	0.2	19.2	36.7	45.4	48.9	50.2	51.3	52.4
1990	1059	0.0	0.0	0.0	17.7	37.6	44.4	47.6	48.6	49.2	49.6	0.0	0.0	0.0	17.7	38.5	46.5	50.6	52.1	53.0	53.9
1991	1469	0.0	0.0	0.1	18.7	39.2	45.3	47.4	48.7	49.4	.	0.0	0.0	0.1	18.9	40.6	47.4	50.2	52.1	53.2	.
1992	1484	0.0	0.0	0.2	19.5	38.1	43.5	45.3	46.0	.	.	0.1	0.1	0.3	20.0	39.1	44.9	47.2	48.8	.	.
1993	1429	0.0	0.0	0.1	21.1	39.0	42.1	43.7	.	.	.	0.0	0.0	0.1	21.6	41.1	45.2	47.5	.	.	.
1994	1332	0.0	0.0	0.1	23.8	39.9	43.6	.	.	.	.	0.0	0.0	0.1	24.0	41.3	45.6	.	.	.	.
1995	1396	0.0	0.0	0.2	24.1	40.7	.	.	.	.	.	0.0	0.0	0.2	24.3	41.9	.	.	.	.	.
1996	1313	0.0	0.0	0.2	22.8	.	.	.	.	.	.	0.0	0.0	0.2	23.2	.	.	.	.	.	.
1997	1381	0.0	0.0	0.1	.	.	.	.	.	.	.	0.0	0.0	0.1	.	.	.	.	.	.	.
1998	1365	0.0	0.0	.	.	.	.	.	.	.	.	0.0	0.0	.	.	.	.	.	.	.	.
1999	1530	0.0	.	.	.	.	.	.	.	.	.	0.0	.	.	.	.	.	.	.	.	.
Panel C - Persistence																					
1984	1037	71.9	63.5	55.3	50.0	45.8	43.2	43.2	43.6	43.4	43.2	73.3	66.1	57.9	52.1	47.9	45.6	45.5	46.2	46.2	46.2
1985	1190	70.3	58.4	52.7	47.0	43.0	41.8	41.8	41.9	42.0	41.6	71.6	60.6	54.9	49.1	45.0	44.0	44.3	44.4	44.6	44.4
1986	1227	75.2	62.8	57.3	49.2	46.9	45.6	44.3	44.6	44.3	44.2	76.7	65.0	59.6	51.8	49.8	48.9	47.7	47.8	47.7	47.2
1987	1200	78.7	66.8	59.3	55.8	50.3	51.3	50.3	49.8	49.7	50.1	80.0	69.9	61.8	59.2	53.6	54.3	54.1	53.3	53.5	53.8
1988	1078	78.8	64.1	58.5	53.2	51.4	49.5	48.4	48.5	48.7	48.3	80.1	67.0	62.2	57.2	55.6	54.0	53.2	53.2	53.7	53.4
1989	1120	78.2	66.7	58.5	56.3	52.1	50.4	51.3	51.0	50.4	50.3	80.4	69.1	61.6	59.9	55.5	54.1	55.2	55.0	54.8	54.5
1990	1059	78.7	68.6	63.0	59.1	53.2	51.5	51.5	50.7	50.5	50.7	80.0	71.8	66.9	62.7	57.6	56.4	57.2	56.4	56.1	55.8
1991	1469	76.1	66.4	60.0	54.3	51.9	50.7	50.8	50.9	50.6	.	78.8	70.6	64.5	59.1	56.8	55.8	55.9	56.2	56.0	.
1992	1484	75.7	65.6	58.8	53.3	50.5	48.7	48.2	47.8	.	.	77.6	68.6	62.5	57.2	54.8	53.3	52.2	52.2	.	.
1993	1429	74.9	63.0	56.3	53.9	48.4	46.4	46.1	.	.	.	76.8	67.3	60.7	58.6	53.8	52.3	51.6	.	.	.
1994	1332	74.1	61.8	57.7	53.5	50.0	49.3	.	.	.	.	76.7	64.8	61.9	57.7	54.0	53.1	.	.	.	.
1995	1396	74.1	61.1	57.3	53.2	49.8	.	.	.	.	.	75.8	64.4	60.9	56.6	53.6	.	.	.	.	.
1996	1313	75.0	62.5	56.4	50.8	.	.	.	.	.	.	77.3	66.5	60.9	55.4	.	.	.	.	.	.
1997	1381	76.7	65.8	59.8	.	.	.	.	.	.	.	79.9	69.2	63.9	.	.	.	.	.	.	.
1998	1365	75.5	61.8	.	.	.	.	.	.	.	.	77.7	65.6	.	.	.	.	.	.	.	.
1999	1530	72.3	.	.	.	.	.	.	.	.	.	74.6	.	.	.	.	.	.	.	.	.

Retention, Graduation and Persistence Rates of First-Time Full-Time Freshmen At North Carolina Central University  
 Group= All Students

Yr of Entry	Number In Class	Original Institution										Any UNC Institution									
		After Year 1	After Year 2	After Year 3	After Year 4	After Year 5	After Year 6	After Year 7	After Year 8	After Year 9	After Year 10	After Year 1	After Year 2	After Year 3	After Year 4	After Year 5	After Year 6	After Year 7	After Year 8	After Year 9	After Year 10
Panel A - Retention																					
1984	664	76.7	58.9	50.6	31.0	10.8	5.6	2.6	2.0	1.1	1.1	79.2	62.2	54.4	33.9	12.3	7.4	3.9	3.0	2.1	1.5
1985	627	71.1	58.7	50.2	29.5	12.4	7.5	5.6	1.6	1.3	1.1	74.0	61.2	53.4	32.4	14.4	8.5	6.4	2.7	2.2	1.8
1986	729	72.3	60.1	50.3	32.0	13.6	7.3	2.7	1.6	0.8	1.2	74.1	63.1	52.9	34.7	15.8	8.9	4.0	2.3	1.4	1.6
1987	849	76.8	62.2	52.5	33.1	13.1	4.1	2.1	0.9	0.7	0.6	78.8	65.0	56.2	36.5	15.4	5.8	3.5	2.1	1.5	1.3
1988	727	78.0	65.1	57.8	37.6	13.6	6.6	3.7	2.5	2.1	1.2	81.3	68.2	61.6	40.9	15.8	7.6	4.8	3.9	3.0	2.1
1989	926	77.1	64.9	56.9	35.6	12.1	5.7	2.8	1.4	1.6	0.8	79.0	70.0	62.5	41.0	15.9	8.1	4.4	2.5	2.8	1.7
1990	769	78.7	69.7	60.6	38.1	14.4	4.8	3.4	1.8	1.7	1.0	81.9	75.7	66.6	42.9	18.2	6.6	4.4	3.0	2.5	1.7
1991	533	83.3	70.0	60.4	37.0	13.3	6.2	5.4	2.4	0.8	.	86.3	74.3	64.9	41.3	16.7	8.8	7.3	3.8	1.9	.
1992	760	79.3	63.0	56.2	33.4	13.3	6.2	1.8	1.2	.	.	80.4	65.5	58.7	35.9	15.4	7.9	3.0	1.7	.	.
1993	810	77.4	67.3	60.0	31.5	12.1	5.9	2.5	.	.	.	80.5	71.9	63.8	35.3	14.6	7.7	3.0	.	.	.
1994	719	78.2	65.1	62.4	33.0	12.2	5.1	.	.	.	.	80.5	68.8	66.8	37.4	15.3	6.4	.	.	.	.
1995	510	72.5	63.5	57.5	27.3	11.8	.	.	.	.	.	75.1	67.5	61.6	30.0	14.1	.	.	.	.	.
1996	681	84.1	68.6	62.7	32.3	.	.	.	.	.	.	85.8	72.1	67.1	35.5	.	.	.	.	.	.
1997	712	77.2	68.0	59.0	.	.	.	.	.	.	.	79.5	71.3	62.1	.	.	.	.	.	.	.
1998	673	77.0	65.4	.	.	.	.	.	.	.	.	79.2	69.5	.	.	.	.	.	.	.	.
1999	624	72.1	.	.	.	.	.	.	.	.	.	75.6	.	.	.	.	.	.	.	.	.
Panel B - Graduation																					
1984	664	0.0	0.0	0.2	12.2	27.3	32.8	35.7	37.2	37.8	38.6	0.0	0.0	0.2	12.5	28.2	34.0	37.2	38.7	39.6	40.8
1985	627	0.0	0.2	0.6	13.9	27.3	32.5	34.8	36.8	37.6	38.0	0.0	0.2	0.6	14.2	28.1	34.3	37.0	39.1	40.0	40.5
1986	729	0.1	0.3	0.4	14.0	27.6	33.3	37.0	38.3	39.2	39.8	0.1	0.3	0.5	14.3	28.7	35.4	39.2	40.6	41.7	42.4
1987	849	0.0	0.0	0.2	15.5	32.0	38.4	40.4	42.0	42.5	42.8	0.0	0.0	0.2	15.7	33.2	40.2	42.6	44.6	45.2	45.8
1988	727	0.0	0.1	0.1	16.0	33.0	39.8	42.1	43.9	45.3	45.8	0.0	0.1	0.1	16.2	34.1	42.0	44.6	46.5	48.1	48.7
1989	926	0.0	0.1	0.6	14.7	32.8	39.1	42.2	43.1	43.7	44.6	0.0	0.1	0.6	15.0	34.4	42.0	45.6	47.0	47.7	48.8
1990	769	0.0	0.0	0.3	17.8	36.5	45.4	47.3	48.6	49.2	49.4	0.0	0.0	0.3	18.2	38.5	48.5	50.7	52.4	53.1	53.6
1991	533	0.0	0.0	0.2	17.4	37.7	45.8	47.7	51.0	52.7	.	0.0	0.0	0.2	18.2	39.2	47.7	50.3	54.0	55.9	.
1992	760	0.0	0.0	0.0	17.8	36.6	43.6	46.7	47.8	.	.	0.0	0.0	0.0	17.9	37.5	45.0	48.7	50.3	.	.
1993	810	0.0	0.0	1.0	24.7	42.0	49.4	51.7	.	.	.	0.0	0.0	1.0	25.2	43.8	51.9	55.2	.	.	.
1994	719	0.0	0.0	0.1	24.8	43.7	49.4	.	.	.	.	0.0	0.0	0.1	24.9	45.2	52.0	.	.	.	.
1995	510	0.0	0.8	1.0	26.9	39.0	.	.	.	.	.	0.0	0.8	1.0	28.0	40.6	.	.	.	.	.
1996	681	0.0	0.0	0.6	26.1	.	.	.	.	.	.	0.0	0.0	0.6	27.0	.	.	.	.	.	.
1997	712	0.0	0.0	0.6	.	.	.	.	.	.	.	0.0	0.0	0.6	.	.	.	.	.	.	.
1998	673	0.0	0.0	.	.	.	.	.	.	.	.	0.0	0.0	.	.	.	.	.	.	.	.
1999	624	0.0	.	.	.	.	.	.	.	.	.	0.0	.	.	.	.	.	.	.	.	.
Panel C - Persistence																					
1984	664	76.7	58.9	50.8	43.2	38.1	38.4	38.3	39.2	38.9	39.6	79.2	62.2	54.5	46.4	40.5	41.4	41.1	41.7	41.7	42.3
1985	627	71.1	58.9	50.9	43.4	39.7	40.0	40.4	38.4	38.9	39.1	74.0	61.4	54.1	46.6	42.4	42.7	43.4	41.8	42.3	42.3
1986	729	72.4	60.4	50.8	46.0	41.2	40.6	39.8	39.9	40.1	41.0	74.2	63.4	53.5	49.0	44.4	44.3	43.2	42.9	43.1	44.0
1987	849	76.8	62.2	52.8	48.6	45.1	42.5	42.5	43.0	43.2	43.3	78.8	65.0	56.4	52.2	48.6	45.9	46.2	46.8	46.8	47.1
1988	727	78.0	65.2	57.9	53.5	46.6	46.4	45.8	46.4	47.3	47.0	81.3	68.4	61.8	57.1	49.9	49.5	49.4	50.3	51.2	50.8
1989	926	77.1	65.0	57.6	50.3	44.9	44.8	45.0	44.5	45.4	45.4	79.0	70.1	63.2	56.0	50.3	50.1	50.0	49.5	50.5	50.5
1990	769	78.7	69.7	60.9	55.9	51.0	50.2	50.7	50.5	50.8	50.5	81.9	75.7	66.8	61.1	56.7	55.1	55.1	55.4	55.5	55.3
1991	533	83.3	70.0	60.6	54.4	51.0	52.0	53.1	53.5	53.5	.	86.3	74.3	65.1	59.5	55.9	56.5	57.6	57.8	57.8	.
1992	760	79.3	63.0	56.2	51.2	49.9	49.7	48.6	48.9	.	.	80.4	65.5	58.7	53.8	52.9	52.9	51.7	52.0	.	.
1993	810	77.4	67.3	61.0	56.2	54.1	55.3	54.2	.	.	.	80.5	71.9	64.8	60.5	58.4	59.5	58.1	.	.	.
1994	719	78.2	65.1	62.6	57.7	55.9	54.5	.	.	.	.	80.5	68.8	66.9	62.3	60.5	58.4	.	.	.	.
1995	510	72.5	64.3	58.4	54.1	50.8	.	.	.	.	.	75.1	68.2	62.5	58.0	54.7	.	.	.	.	.
1996	681	84.1	68.6	63.3	58.4	.	.	.	.	.	.	85.8	72.1	67.7	62.6	.	.	.	.	.	.
1997	712	77.2	68.0	59.6	.	.	.	.	.	.	.	79.5	71.3	62.6	.	.	.	.	.	.	.
1998	673	77.0	65.4	.	.	.	.	.	.	.	.	79.2	69.5	.	.	.	.	.	.	.	.
1999	624	72.1	.	.	.	.	.	.	.	.	.	75.6	.	.	.	.	.	.	.	.	.

Retention, Graduation and Persistence Rates of First-Time Full-Time Freshmen At North Carolina School of the Arts  
 Group= All Students Excludes 4-year Diploma at NCSA

Yr of Entry	Number In Class	Original Institution										Any UNC Institution									
		After Year 1	After Year 2	After Year 3	After Year 4	After Year 5	After Year 6	After Year 7	After Year 8	After Year 9	After Year 10	After Year 1	After Year 2	After Year 3	After Year 4	After Year 5	After Year 6	After Year 7	After Year 8	After Year 9	After Year 10
Panel A - Retention																					
1984	107	60.7	43.9	31.8	6.5	3.7	1.9	0.0	0.0	0.0	0.0	63.6	48.6	34.6	10.3	5.6	4.7	1.9	1.9	0.9	0.9
1985	99	56.6	46.5	31.3	6.1	1.0	1.0	1.0	1.0	1.0	1.0	60.6	47.5	32.3	7.1	2.0	3.0	3.0	3.0	3.0	3.0
1986	125	59.2	39.2	30.4	4.0	0.8	0.0	0.0	0.0	0.0	0.0	63.2	42.4	34.4	7.2	4.0	0.8	0.0	0.0	0.0	0.0
1987	118	58.5	39.8	35.6	6.8	1.7	3.4	0.8	0.8	0.0	0.0	61.0	44.1	38.1	8.5	4.2	4.2	1.7	1.7	1.7	0.0
1988	147	53.1	39.5	32.0	7.5	3.4	0.7	0.0	0.7	0.0	0.0	55.8	46.9	42.9	15.6	10.2	2.7	1.4	2.0	1.4	0.0
1989	118	54.2	33.1	29.7	10.2	1.7	0.0	0.0	0.0	0.0	0.8	58.5	38.1	34.7	16.9	6.8	2.5	4.2	5.1	3.4	1.7
1990	106	61.3	35.8	28.3	1.9	0.0	0.0	0.0	0.0	0.0	0.0	63.2	36.8	29.2	2.8	0.0	0.9	0.0	0.9	0.0	0.0
1991	90	60.0	43.3	30.0	6.7	3.3	1.1	1.1	0.0	0.0	0.0	62.2	45.6	33.3	8.9	3.3	2.2	1.1	0.0	1.1	.
1992	122	63.9	45.1	35.2	4.9	0.8	0.0	0.0	0.0	0.0	.	68.0	50.8	38.5	9.0	4.1	0.0	0.8	0.8	.	.
1993	144	61.8	47.9	37.5	4.9	2.1	0.0	0.0	.	.	.	63.2	50.0	39.6	6.9	4.2	0.7	0.7	.	.	.
1994	122	61.5	51.6	42.6	4.9	0.0	0.0	.	.	.	.	63.9	54.9	45.1	7.4	1.6	0.8	.	.	.	.
1995	136	71.3	49.3	46.3	8.8	2.2	.	.	.	.	.	72.8	53.7	50.7	14.0	5.9	.	.	.	.	.
1996	143	61.5	51.7	44.8	4.9	.	.	.	.	.	.	62.2	55.2	49.0	8.4	.	.	.	.	.	.
1997	205	69.3	53.2	45.4	.	.	.	.	.	.	.	71.2	57.6	50.7	.	.	.	.	.	.	.
1998	168	75.0	55.4	.	.	.	.	.	.	.	.	76.2	57.7	.	.	.	.	.	.	.	.
1999	176	73.3	.	.	.	.	.	.	.	.	.	73.3	.	.	.	.	.	.	.	.	.
Panel B - Graduation																					
1984	107	0.0	0.0	4.7	28.0	32.7	33.6	36.4	36.4	36.4	36.4	0.0	0.0	4.7	28.0	33.6	35.5	39.3	39.3	40.2	40.2
1985	99	0.0	1.0	9.1	34.3	37.4	38.4	39.4	39.4	39.4	39.4	0.0	1.0	9.1	34.3	37.4	38.4	40.4	40.4	41.4	41.4
1986	125	0.0	0.8	3.2	29.6	34.4	35.2	35.2	35.2	36.0	36.0	0.0	0.8	3.2	31.2	36.0	38.4	38.4	38.4	39.2	39.2
1987	118	0.0	0.8	2.5	28.0	30.5	30.5	32.2	32.2	32.2	33.1	0.0	0.8	2.5	28.0	30.5	31.4	33.9	33.9	33.9	34.7
1988	147	0.0	0.7	2.7	24.5	29.3	32.0	32.0	32.7	32.7	32.7	0.0	0.7	2.7	25.2	31.3	36.7	38.1	39.5	39.5	40.1
1989	118	0.0	0.8	0.8	17.8	23.7	24.6	24.6	24.6	25.4	25.4	0.0	0.8	0.8	18.6	25.4	28.0	28.0	28.8	30.5	33.1
1990	106	0.0	0.0	2.8	27.4	29.2	29.2	29.2	30.2	30.2	30.2	0.0	0.0	2.8	28.3	30.2	30.2	30.2	31.1	32.1	32.1
1991	90	0.0	0.0	5.6	26.7	30.0	31.1	31.1	32.2	32.2	.	0.0	0.0	5.6	26.7	31.1	32.2	32.2	33.3	33.3	.
1992	122	0.0	0.0	4.9	34.4	37.7	38.5	38.5	38.5	.	.	0.0	0.0	4.9	35.2	40.2	43.4	43.4	43.4	.	.
1993	144	0.0	0.0	2.8	36.1	38.2	39.6	39.6	.	.	.	0.0	0.0	2.8	36.1	38.9	41.0	41.7	.	.	.
1994	122	0.0	0.0	2.5	40.2	45.1	45.1	.	.	.	.	0.0	0.0	2.5	41.0	45.9	45.9	.	.	.	.
1995	136	0.0	0.0	3.7	42.6	49.3	.	.	.	.	.	0.0	0.0	3.7	43.4	50.7	.	.	.	.	.
1996	143	0.0	0.0	3.5	39.2	.	.	.	.	.	.	0.0	0.0	3.5	39.2	.	.	.	.	.	.
1997	205	0.0	0.0	2.4	.	.	.	.	.	.	.	0.0	0.0	2.4	.	.	.	.	.	.	.
1998	168	0.0	0.0	.	.	.	.	.	.	.	.	0.0	0.0	.	.	.	.	.	.	.	.
1999	176	0.0	.	.	.	.	.	.	.	.	.	0.6	.	.	.	.	.	.	.	.	.
Panel C - Persistence																					
1984	107	60.7	43.9	36.4	34.6	36.4	35.5	36.4	36.4	36.4	36.4	63.6	48.6	39.3	38.3	39.3	40.2	41.1	41.1	41.1	41.1
1985	99	56.6	47.5	40.4	40.4	38.4	39.4	40.4	40.4	40.4	40.4	60.6	48.5	41.4	41.4	39.4	41.4	43.4	43.4	44.4	44.4
1986	125	59.2	40.0	33.6	33.6	35.2	35.2	35.2	35.2	36.0	36.0	63.2	43.2	37.6	38.4	40.0	39.2	38.4	38.4	39.2	39.2
1987	118	58.5	40.7	38.1	34.7	32.2	33.9	33.1	33.1	33.1	33.1	61.0	44.9	40.7	36.4	34.7	35.6	35.6	35.6	35.6	34.7
1988	147	53.1	40.1	34.7	32.0	32.7	32.7	32.0	33.3	32.7	32.7	55.8	47.6	45.6	40.8	41.5	39.5	39.5	41.5	40.8	40.1
1989	118	54.2	33.9	30.5	28.0	25.4	24.6	24.6	24.6	25.4	25.4	58.5	39.0	35.6	35.6	32.2	30.5	32.2	33.9	33.9	34.7
1990	106	61.3	35.8	31.1	29.2	29.2	29.2	29.2	30.2	30.2	30.2	63.2	36.8	32.1	31.1	30.2	31.1	30.2	32.1	32.1	32.1
1991	90	60.0	43.3	35.6	33.3	33.3	32.2	32.2	32.2	32.2	.	62.2	45.6	38.9	35.6	34.4	34.4	33.3	33.3	34.4	.
1992	122	63.9	45.1	40.2	39.3	38.5	38.5	38.5	38.5	.	.	68.0	50.8	43.4	44.3	44.3	43.4	44.3	44.3	.	.
1993	144	61.8	47.9	40.3	41.0	40.3	39.6	39.6	.	.	.	63.2	50.0	42.4	43.1	43.1	41.7	42.4	.	.	.
1994	122	61.5	51.6	45.1	45.1	45.1	.	.	.	.	.	63.9	54.9	47.5	48.4	47.5	46.7	.	.	.	.
1995	136	71.3	49.3	50.0	51.5	51.5	.	.	.	.	.	72.8	53.7	54.4	57.4	56.6	.	.	.	.	.
1996	143	61.5	51.7	48.3	44.1	.	.	.	.	.	.	62.2	55.2	52.4	47.6	.	.	.	.	.	.
1997	205	69.3	53.2	47.8	.	.	.	.	.	.	.	71.2	57.6	53.2	.	.	.	.	.	.	.
1998	168	75.0	55.4	.	.	.	.	.	.	.	.	76.2	57.7	.	.	.	.	.	.	.	.
1999	176	73.3	.	.	.	.	.	.	.	.	.	73.9	.	.	.	.	.	.	.	.	.

Retention, Graduation and Persistence Rates of First-Time Full-Time Freshmen At North Carolina State University  
 Group= All Students Excludes Ag Inst at NCSU

Yr of Entry	Number In Class	Original Institution										Any UNC Institution									
		After Year 1	After Year 2	After Year 3	4	5	6	7	8	9	10	After Year 1	After Year 2	After Year 3	4	5	6	7	8	9	10
Panel A - Retention																					
1984	3375	87.6	78.2	70.9	46.9	13.9	5.5	2.8	2.1	1.6	1.1	89.8	82.0	76.0	51.7	16.7	7.3	4.2	3.4	2.7	1.9
1985	3334	88.0	76.4	70.7	46.8	14.4	5.9	3.1	2.1	1.4	1.0	89.6	80.3	75.2	50.7	17.2	7.6	4.5	2.9	2.1	1.6
1986	3354	85.4	75.3	70.2	47.5	15.4	5.0	3.0	2.1	1.3	0.7	87.2	79.6	75.6	52.6	18.6	7.3	4.7	3.7	2.1	1.3
1987	3223	90.4	80.7	75.4	49.9	14.4	5.9	2.7	1.6	1.1	0.7	91.8	84.1	80.1	54.0	17.3	8.2	4.2	2.6	1.8	1.2
1988	3410	90.0	81.9	76.4	49.6	14.6	4.7	2.3	1.6	1.0	0.4	91.7	85.5	80.8	54.0	17.2	6.2	3.3	2.7	1.9	1.2
1989	3354	89.7	81.2	75.8	48.3	13.7	4.2	2.4	1.7	1.1	0.7	91.4	85.5	81.2	53.4	17.2	6.5	3.6	2.4	1.7	1.1
1990	3233	89.5	81.2	75.5	47.6	11.7	4.5	2.6	1.1	0.7	0.6	91.3	85.3	80.5	52.2	14.8	6.5	4.0	1.9	1.3	1.1
1991	3221	89.1	80.2	73.1	47.0	12.9	4.7	2.9	1.6	1.0	.	90.7	84.5	78.9	52.3	16.1	6.5	4.3	2.8	1.8	.
1992	3048	87.5	77.1	70.9	43.7	11.3	3.9	2.4	1.3	.	.	89.7	81.5	76.7	49.1	14.8	6.2	3.9	2.4	.	.
1993	3166	89.0	78.3	72.5	44.1	11.5	4.3	2.4	.	.	.	90.9	82.8	78.2	49.6	15.2	6.3	3.9	.	.	.
1994	3513	86.6	74.6	67.7	40.9	11.4	4.2	.	.	.	.	88.5	79.2	73.8	46.3	14.8	6.0	.	.	.	.
1995	3496	86.7	76.4	70.5	42.8	11.4	.	.	.	.	.	89.1	81.5	76.5	47.5	14.3	.	.	.	.	.
1996	3517	88.1	78.6	73.3	43.3	.	.	.	.	.	.	90.6	83.4	78.7	47.3	.	.	.	.	.	.
1997	3620	87.8	78.1	72.1	.	.	.	.	.	.	.	89.9	82.6	77.1	.	.	.	.	.	.	.
1998	3617	88.0	79.1	.	.	.	.	.	.	.	.	90.4	84.1	.	.	.	.	.	.	.	.
1999	3528	88.8	.	.	.	.	.	.	.	.	.	91.2	.	.	.	.	.	.	.	.	.
Panel B - Graduation																					
1984	3375	0.0	0.0	0.1	20.1	51.3	59.7	61.8	63.1	63.6	64.4	0.0	0.0	0.1	21.2	54.3	63.7	66.4	68.0	68.9	69.9
1985	3334	0.0	0.0	0.3	20.3	50.6	59.1	61.7	63.0	63.8	64.4	0.0	0.0	0.3	21.2	53.1	62.6	65.7	67.5	68.5	69.3
1986	3354	0.0	0.0	0.5	19.1	49.6	59.0	61.4	62.5	63.2	63.8	0.0	0.0	0.5	20.2	52.7	63.3	66.3	67.9	69.4	70.4
1987	3223	0.0	0.0	0.5	23.0	55.9	63.7	66.9	67.8	68.4	68.9	0.0	0.0	0.5	24.2	58.8	67.6	71.8	73.2	74.1	74.8
1988	3410	0.0	0.0	0.4	24.0	57.8	67.1	69.7	70.5	71.2	71.5	0.0	0.0	0.4	24.8	60.4	70.9	74.0	75.1	76.0	76.6
1989	3354	0.0	0.0	0.4	25.0	57.6	66.6	68.5	69.4	70.1	70.4	0.0	0.0	0.4	26.2	60.8	71.3	73.9	75.3	76.2	76.7
1990	3233	0.0	0.0	0.8	25.6	59.5	66.9	68.8	70.2	70.8	71.1	0.0	0.0	0.8	26.8	62.4	71.0	73.8	75.8	76.6	77.1
1991	3221	0.0	0.0	0.7	24.0	56.0	63.8	65.8	67.0	67.6	.	0.0	0.0	0.8	25.2	59.3	68.7	71.3	72.9	73.9	.
1992	3048	0.0	0.0	0.7	24.9	55.3	62.7	64.5	65.2	.	.	0.0	0.0	0.7	26.0	58.7	67.2	69.9	70.9	.	.
1993	3166	0.0	0.1	1.0	26.6	57.5	64.6	66.5	.	.	.	0.0	0.2	1.0	27.5	60.6	69.1	71.6	.	.	.
1994	3513	0.0	0.1	0.9	25.2	53.1	60.2	.	.	.	.	0.0	0.1	0.9	26.3	56.6	65.1	.	.	.	.
1995	3496	0.0	0.1	0.7	25.7	54.8	.	.	.	.	.	0.0	0.1	0.7	27.1	58.4	.	.	.	.	.
1996	3517	0.0	0.0	0.6	27.4	.	.	.	.	.	.	0.0	0.0	0.6	29.1	.	.	.	.	.	.
1997	3620	0.0	0.0	0.3	.	.	.	.	.	.	.	0.0	0.0	0.3	.	.	.	.	.	.	.
1998	3617	0.0	0.0	.	.	.	.	.	.	.	.	0.0	0.0	.	.	.	.	.	.	.	.
1999	3528	0.0	.	.	.	.	.	.	.	.	.	0.0	.	.	.	.	.	.	.	.	.
Panel C - Persistence																					
1984	3375	87.6	78.2	71.0	67.1	65.2	65.2	64.6	65.2	65.2	65.5	89.8	82.0	76.1	72.9	70.9	71.0	70.5	71.4	71.6	71.9
1985	3334	88.0	76.4	71.0	67.1	65.0	65.0	64.8	65.1	65.2	65.4	89.6	80.4	75.5	71.9	70.2	70.2	70.4	70.6	70.8	70.8
1986	3354	85.4	75.3	70.6	66.6	64.9	64.0	64.4	64.5	64.6	64.5	87.2	79.6	76.1	72.9	71.3	70.6	71.0	71.6	71.5	71.6
1987	3223	90.4	80.7	76.0	72.8	70.2	69.6	69.6	69.4	69.5	69.6	91.8	84.1	80.6	78.3	76.1	75.7	76.0	75.8	75.9	76.0
1988	3410	90.0	81.9	76.8	73.7	72.4	71.8	72.0	72.1	72.1	71.9	91.7	85.5	81.2	78.7	77.6	77.2	77.4	77.8	77.9	77.8
1989	3354	89.7	81.2	76.3	73.3	71.3	70.8	70.9	71.1	71.2	71.1	91.4	85.5	81.7	79.6	78.1	77.8	77.5	77.6	77.9	77.8
1990	3233	89.5	81.2	76.3	73.2	71.2	71.3	71.4	71.3	71.6	71.8	91.3	85.4	81.3	79.0	77.2	77.4	77.8	77.7	77.9	78.2
1991	3221	89.1	80.2	73.9	71.0	68.9	68.5	68.7	68.6	68.7	.	90.7	84.5	79.7	77.5	75.4	75.2	75.6	75.6	75.7	.
1992	3048	87.5	77.1	71.6	68.7	66.6	66.6	66.9	66.4	.	.	89.7	81.5	77.4	75.0	73.5	73.4	73.8	73.3	.	.
1993	3166	89.0	78.5	73.4	70.7	69.0	68.9	68.9	.	.	.	91.0	83.0	79.2	77.0	75.7	75.3	75.5	.	.	.
1994	3513	86.6	74.6	68.6	66.1	64.5	64.4	.	.	.	.	88.5	79.3	74.8	72.6	71.4	71.2	.	.	.	.
1995	3496	86.7	76.5	71.1	68.4	66.2	.	.	.	.	.	89.1	81.5	77.1	74.7	72.7	.	.	.	.	.
1996	3517	88.1	78.6	73.9	70.7	.	.	.	.	.	.	90.6	83.4	79.2	76.4	.	.	.	.	.	.
1997	3620	87.8	78.1	72.4	.	.	.	.	.	.	.	89.9	82.6	77.4	.	.	.	.	.	.	.
1998	3617	88.0	79.1	.	.	.	.	.	.	.	.	90.4	84.1	.	.	.	.	.	.	.	.
1999	3528	88.8	.	.	.	.	.	.	.	.	.	91.2	.	.	.	.	.	.	.	.	.

Retention, Graduation and Persistence Rates of First-Time Full-Time Freshmen At U.N.C. - Asheville  
 Group= All Students

Yr of Entry	Number In Class	Original Institution										Any UNC Institution									
		After Year 1	After Year 2	After Year 3	After Year 4	After Year 5	After Year 6	After Year 7	After Year 8	After Year 9	After Year 10	After Year 1	After Year 2	After Year 3	After Year 4	After Year 5	After Year 6	After Year 7	After Year 8	After Year 9	After Year 10
Panel A - Retention																					
1984	267	72.7	50.9	44.2	27.3	10.1	5.2	3.7	2.6	1.1	1.1	75.3	58.8	55.1	35.6	17.6	10.5	6.7	4.1	1.9	1.5
1985	328	73.2	54.9	46.6	26.2	8.8	5.5	4.0	1.2	1.2	1.5	75.9	65.5	59.5	36.9	13.4	6.7	5.5	2.1	1.8	1.8
1986	354	68.1	49.7	45.2	28.5	12.1	5.6	2.8	0.8	0.8	0.6	72.0	61.9	60.5	39.3	17.2	8.5	4.5	3.1	2.0	1.4
1987	436	73.6	56.0	48.9	29.8	10.1	3.0	1.8	1.6	1.4	0.9	76.8	63.8	58.9	38.1	14.4	6.0	4.6	4.1	2.3	1.6
1988	441	74.1	58.3	52.4	33.8	13.2	5.2	3.6	2.3	0.7	0.5	79.8	69.6	66.0	45.8	18.6	8.2	5.9	3.9	1.1	1.6
1989	413	74.8	56.4	52.1	30.5	10.7	4.6	2.2	1.7	1.7	1.2	79.7	67.6	66.3	42.1	16.5	7.5	4.6	3.6	3.1	1.9
1990	374	74.6	56.4	47.6	28.1	8.0	4.5	2.7	1.3	0.8	0.5	78.3	68.2	63.6	39.6	11.5	7.0	4.3	2.9	2.4	1.6
1991	336	78.3	61.3	55.1	26.8	8.0	3.6	1.8	1.8	0.6	.	82.4	71.4	67.0	36.6	13.1	5.1	2.7	2.4	0.9	.
1992	364	78.0	63.5	54.4	26.9	9.1	3.0	2.5	1.6	.	.	83.2	74.2	67.3	36.0	15.4	5.8	3.8	2.5	.	.
1993	394	80.2	64.7	61.2	27.4	7.4	1.8	0.5	.	.	.	83.8	75.6	73.1	35.8	10.2	3.3	1.0	.	.	.
1994	392	78.3	62.2	55.9	21.9	6.6	3.6	.	.	.	.	82.4	71.4	66.6	31.6	11.5	5.6	.	.	.	.
1995	392	77.0	62.2	56.9	25.0	6.1	.	.	.	.	.	82.1	73.5	67.9	33.9	9.9	.	.	.	.	.
1996	450	80.4	62.4	57.3	25.1	.	.	.	.	.	.	84.4	72.4	69.3	34.0	.	.	.	.	.	.
1997	470	77.0	60.0	56.2	.	.	.	.	.	.	.	83.2	71.7	68.3	.	.	.	.	.	.	.
1998	474	77.8	61.2	.	.	.	.	.	.	.	.	82.3	70.3	.	.	.	.	.	.	.	.
1999	456	76.5	.	.	.	.	.	.	.	.	.	81.1	.	.	.	.	.	.	.	.	.
Panel B - Graduation																					
1984	267	0.0	0.0	1.1	14.6	30.0	34.1	36.0	37.5	38.6	39.0	0.0	0.0	1.1	16.1	34.8	41.6	45.7	48.3	49.8	50.6
1985	328	0.3	0.3	0.3	16.2	31.4	36.6	38.1	39.0	39.0	39.3	0.3	0.3	0.6	18.0	40.2	48.5	50.3	51.5	51.8	52.4
1986	354	0.0	0.0	0.6	13.8	29.4	34.2	36.7	37.9	38.4	38.7	0.0	0.0	0.6	17.2	38.4	45.8	49.2	50.8	52.0	52.5
1987	436	0.0	0.0	0.5	16.3	34.6	41.3	42.9	43.3	43.8	44.5	0.0	0.0	0.5	18.6	41.1	49.5	52.1	53.0	54.1	55.0
1988	441	0.0	0.0	0.7	16.3	35.6	42.2	43.3	44.7	46.3	47.2	0.0	0.0	0.7	18.6	45.1	53.7	55.3	57.6	60.3	61.2
1989	413	0.0	0.0	0.5	18.4	36.1	41.6	44.1	44.6	45.3	45.8	0.0	0.0	0.7	22.0	45.5	53.8	57.1	58.6	59.8	60.5
1990	374	0.0	0.0	0.0	17.4	37.2	40.6	42.2	43.0	43.9	44.1	0.0	0.0	0.0	22.7	49.7	55.1	57.5	59.1	60.2	60.7
1991	336	0.0	0.0	0.6	23.2	40.8	45.2	46.7	47.0	47.6	.	0.0	0.0	0.6	26.2	48.8	56.0	58.6	59.2	60.4	.
1992	364	0.0	0.0	0.8	27.7	47.0	51.9	53.0	53.8	.	.	0.0	0.0	0.8	31.6	54.7	64.3	66.8	68.7	.	.
1993	394	0.0	0.0	0.3	32.5	51.3	55.1	56.3	.	.	.	0.0	0.0	0.3	36.0	59.9	64.0	66.8	.	.	.
1994	392	0.0	0.0	0.3	31.1	43.6	48.0	.	.	.	.	0.0	0.0	0.5	32.9	50.5	57.1	.	.	.	.
1995	392	0.0	0.0	0.8	31.4	50.0	.	.	.	.	.	0.0	0.0	1.0	34.7	58.7	.	.	.	.	.
1996	450	0.0	0.0	0.2	30.7	.	.	.	.	.	.	0.0	0.0	0.2	34.2	.	.	.	.	.	.
1997	470	0.0	0.0	0.2	.	.	.	.	.	.	.	0.0	0.0	0.2	.	.	.	.	.	.	.
1998	474	0.0	0.0	.	.	.	.	.	.	.	.	0.0	0.0	.	.	.	.	.	.	.	.
1999	456	0.0	.	.	.	.	.	.	.	.	.	0.0	.	.	.	.	.	.	.	.	.
Panel C - Persistence																					
1984	267	72.7	50.9	45.3	41.9	40.1	39.3	39.7	40.1	39.7	40.1	75.3	58.8	56.2	51.7	52.4	52.1	52.4	52.4	51.7	52.1
1985	328	73.5	55.2	47.0	42.4	40.2	42.1	42.1	40.2	40.2	40.9	76.2	65.9	60.1	54.9	53.7	55.2	55.8	53.7	53.7	54.3
1986	354	68.1	49.7	45.8	42.4	41.5	39.8	39.5	38.7	39.3	39.3	72.0	61.9	61.0	56.5	55.6	54.2	53.7	54.0	54.0	54.0
1987	436	73.6	56.0	49.3	46.1	44.7	44.3	44.7	45.0	45.2	45.4	76.8	63.8	59.4	56.7	55.5	55.5	56.7	57.1	56.4	56.7
1988	441	74.1	58.3	53.1	50.1	48.8	47.4	46.9	46.9	46.9	47.6	79.8	69.6	66.7	64.4	63.7	61.9	61.2	61.5	61.5	62.8
1989	413	74.8	56.4	52.5	48.9	46.7	46.2	46.2	46.2	47.0	47.0	79.7	67.6	67.1	64.2	62.0	61.3	61.7	62.2	63.0	62.5
1990	374	74.6	56.4	47.6	45.5	45.2	45.2	44.9	44.4	44.7	44.7	78.3	68.2	63.6	62.3	61.2	62.0	61.8	62.0	62.6	62.3
1991	336	78.3	61.3	55.7	50.0	48.8	48.8	48.5	48.8	48.2	.	82.4	71.4	67.6	62.8	61.9	61.0	61.3	61.6	61.3	.
1992	364	78.0	63.5	55.2	54.7	56.0	54.9	55.5	55.5	.	.	83.2	74.2	68.1	67.6	70.1	70.1	70.6	71.2	.	.
1993	394	80.2	64.7	61.4	59.9	58.6	56.9	56.9	.	.	.	83.8	75.6	73.4	71.8	70.1	67.3	67.8	.	.	.
1994	392	78.3	62.2	56.1	53.1	50.3	51.5	.	.	.	.	82.4	71.4	67.1	64.5	62.0	62.8	.	.	.	.
1995	392	77.0	62.2	57.7	56.4	56.1	.	.	.	.	.	82.1	73.5	68.9	68.6	68.6	.	.	.	.	.
1996	450	80.4	62.4	57.6	55.8	.	.	.	.	.	.	84.4	72.4	68.9	68.2	.	.	.	.	.	.
1997	470	77.0	60.0	56.4	.	.	.	.	.	.	.	83.2	71.7	68.5	.	.	.	.	.	.	.
1998	474	77.8	61.2	.	.	.	.	.	.	.	.	82.3	70.3	.	.	.	.	.	.	.	.
1999	456	76.5	.	.	.	.	.	.	.	.	.	81.1	.	.	.	.	.	.	.	.	.

Retention, Graduation and Persistence Rates of First-Time Full-Time Freshmen At U.N.C. - Chapel Hill  
 Group= All Students

Yr of Entry	Number In Class	Original Institution										Any UNC Institution									
		After Year 1	After Year 2	After Year 3	After Year 4	After Year 5	After Year 6	After Year 7	After Year 8	After Year 9	After Year 10	After Year 1	After Year 2	After Year 3	After Year 4	After Year 5	After Year 6	After Year 7	After Year 8	After Year 9	After Year 10
Panel A - Retention																					
1984	3383	88.9	82.1	79.8	23.5	4.6	1.5	0.7	0.7	0.5	0.7	91.1	85.8	84.1	27.2	6.6	2.8	1.7	1.6	1.1	1.3
1985	3319	91.7	85.7	83.6	19.3	3.6	1.1	1.0	0.6	0.5	0.4	93.2	88.3	86.7	22.2	5.0	1.9	1.7	1.2	1.0	0.8
1986	3298	92.4	87.3	84.6	19.7	3.2	1.2	0.8	0.4	0.3	0.1	93.7	89.4	86.8	21.5	4.7	2.2	1.5	1.1	0.8	0.4
1987	3142	94.5	89.2	86.4	19.9	2.9	1.1	0.8	0.4	0.4	0.3	95.5	91.3	89.1	22.3	4.1	1.8	1.3	0.7	0.5	0.5
1988	3290	94.7	90.7	87.8	18.5	2.7	1.1	0.6	0.5	0.3	0.1	95.7	92.4	90.1	20.6	4.2	1.7	1.1	1.1	0.9	0.4
1989	3184	94.7	89.7	85.9	20.0	2.7	1.1	0.6	0.4	0.2	0.1	96.2	92.3	88.8	22.5	4.1	2.1	1.3	0.9	0.6	0.4
1990	3240	93.4	87.7	85.0	18.8	3.0	1.3	0.6	0.4	0.2	0.4	95.2	90.7	88.6	21.8	4.7	2.3	1.4	1.0	0.7	0.8
1991	3133	94.6	89.6	86.4	19.9	2.8	0.7	0.6	0.3	0.3	.	96.0	92.0	89.5	22.3	3.8	1.6	1.1	0.6	0.5	.
1992	3202	93.2	87.5	84.1	18.3	2.7	1.2	0.4	0.3	.	.	94.8	90.5	87.3	21.1	4.1	2.0	1.0	0.7	.	.
1993	3317	93.3	88.0	82.8	16.8	2.5	1.0	0.8	.	.	.	95.0	91.3	86.5	19.4	3.7	1.9	1.4	.	.	.
1994	3486	92.8	86.1	81.1	13.9	2.1	0.9	.	.	.	.	94.5	89.2	84.8	16.9	3.5	1.7	.	.	.	.
1995	3231	93.7	87.0	83.3	15.3	2.1	.	.	.	.	.	95.2	90.2	87.1	18.3	3.7	.	.	.	.	.
1996	3270	93.6	88.0	84.3	14.2	.	.	.	.	.	.	95.0	90.7	87.8	16.6	.	.	.	.	.	.
1997	3414	94.8	88.8	86.5	.	.	.	.	.	.	.	96.0	91.2	89.0	.	.	.	.	.	.	.
1998	3427	93.9	87.7	.	.	.	.	.	.	.	.	95.4	90.2	.	.	.	.	.	.	.	.
1999	3390	93.8	.	.	.	.	.	.	.	.	.	95.0	.	.	.	.	.	.	.	.	.
Panel B - Graduation																					
1984	3383	0.0	0.0	0.7	53.0	71.7	75.7	77.2	77.6	78.0	78.3	0.0	0.0	0.7	54.0	74.4	79.3	81.2	81.9	82.6	83.0
1985	3319	0.0	0.0	0.5	59.4	77.0	80.2	81.0	81.4	81.9	82.2	0.0	0.0	0.5	60.0	78.9	82.7	83.8	84.4	85.1	85.5
1986	3298	0.0	0.0	0.9	60.6	79.2	81.7	82.6	83.4	83.8	84.0	0.0	0.0	1.0	61.5	80.7	83.6	84.8	85.8	86.4	86.7
1987	3142	0.0	0.0	1.0	61.3	80.8	83.2	84.1	84.7	85.1	85.5	0.0	0.0	1.0	61.8	82.5	85.5	86.5	87.2	87.7	88.2
1988	3290	0.0	0.0	1.2	64.7	82.5	85.0	85.9	86.3	86.7	86.9	0.0	0.0	1.2	65.2	83.9	87.0	88.0	88.6	89.1	89.5
1989	3184	0.0	0.1	1.4	62.7	81.8	84.1	84.9	85.3	85.6	85.8	0.0	0.1	1.4	63.5	83.6	86.5	87.5	88.0	88.4	88.8
1990	3240	0.0	0.0	1.2	62.6	79.2	81.7	82.7	83.2	83.6	83.8	0.0	0.0	1.2	63.4	81.2	84.6	85.9	86.6	87.2	87.5
1991	3133	0.0	0.0	1.2	62.7	81.0	83.6	84.1	84.6	84.8	.	0.0	0.0	1.2	63.4	83.1	86.1	87.1	87.8	88.1	.
1992	3202	0.0	0.1	1.7	62.7	77.8	80.2	80.9	81.1	.	.	0.0	0.1	1.7	63.5	80.0	83.1	84.0	84.4	.	.
1993	3317	0.0	0.0	1.7	63.0	77.7	79.7	80.4	.	.	.	0.0	0.0	1.7	64.2	80.5	82.9	83.8	.	.	.
1994	3486	0.0	0.0	1.7	65.2	77.7	78.9	.	.	.	.	0.0	0.0	1.7	66.1	79.8	81.8	.	.	.	.
1995	3231	0.0	0.0	1.2	65.0	77.2	.	.	.	.	.	0.0	0.0	1.3	65.8	79.5	.	.	.	.	.
1996	3270	0.0	0.0	1.4	66.9	.	.	.	.	.	.	0.0	0.0	1.4	67.9	.	.	.	.	.	.
1997	3414	0.0	0.0	1.3	.	.	.	.	.	.	.	0.0	0.0	1.4	.	.	.	.	.	.	.
1998	3427	0.0	0.0	.	.	.	.	.	.	.	.	0.0	0.0	.	.	.	.	.	.	.	.
1999	3390	0.0	.	.	.	.	.	.	.	.	.	0.0	.	.	.	.	.	.	.	.	.
Panel C - Persistence																					
1984	3383	88.9	82.1	80.5	76.5	76.4	77.2	77.9	78.3	78.5	79.0	91.1	85.8	84.8	81.2	81.0	82.1	82.9	83.6	83.7	84.3
1985	3319	91.7	85.7	84.1	78.7	80.6	81.3	82.0	82.0	82.3	82.6	93.2	88.3	87.2	82.2	83.9	84.6	85.5	85.6	86.0	86.4
1986	3298	92.4	87.3	85.5	80.3	82.4	82.9	83.4	83.8	84.1	84.0	93.7	89.4	87.8	83.0	85.4	85.7	86.3	86.9	87.3	87.1
1987	3142	94.5	89.2	87.4	81.2	83.7	84.3	84.9	85.0	85.5	85.8	95.5	91.3	90.0	84.2	86.6	87.3	87.8	87.9	88.3	88.7
1988	3290	94.7	90.7	89.0	83.2	85.2	86.1	86.5	86.7	87.0	87.0	95.7	92.5	91.3	85.8	88.1	88.7	89.1	89.7	90.1	89.9
1989	3184	94.8	89.8	87.3	82.7	84.4	85.2	85.5	85.7	85.8	85.9	96.2	92.3	90.2	85.9	87.7	88.6	88.7	89.0	89.0	89.3
1990	3240	93.4	87.7	86.3	81.5	82.2	83.0	83.4	83.6	83.8	84.2	95.2	90.7	89.9	85.2	85.9	86.9	87.3	87.7	87.9	88.2
1991	3133	94.7	89.7	87.7	82.6	83.8	84.3	84.8	84.9	85.1	.	96.0	92.1	90.7	85.7	86.9	87.7	88.2	88.4	88.6	.
1992	3202	93.2	87.6	85.8	81.1	80.5	81.4	81.3	81.4	.	.	94.8	90.5	89.0	84.6	84.0	85.0	84.9	85.2	.	.
1993	3317	93.3	88.0	84.5	79.8	80.2	80.7	81.2	.	.	.	95.0	91.3	88.3	83.7	84.1	84.8	85.2	.	.	.
1994	3486	92.8	86.1	82.8	79.1	79.7	79.8	.	.	.	.	94.5	89.2	86.5	83.0	83.3	83.5	.	.	.	.
1995	3231	93.7	87.0	84.6	80.3	79.3	.	.	.	.	.	95.2	90.2	88.4	84.1	83.2	.	.	.	.	.
1996	3270	93.6	88.1	85.7	81.0	.	.	.	.	.	.	95.0	90.7	89.2	84.5	.	.	.	.	.	.
1997	3414	94.8	88.8	87.8	.	.	.	.	.	.	.	96.0	91.2	90.4	.	.	.	.	.	.	.
1998	3427	93.9	87.7	.	.	.	.	.	.	.	.	95.4	90.2	.	.	.	.	.	.	.	.
1999	3390	93.8	.	.	.	.	.	.	.	.	.	95.0	.	.	.	.	.	.	.	.	.

Retention, Graduation and Persistence Rates of First-Time Full-Time Freshmen At U.N.C. - Charlotte  
 Group= All Students

Yr of Entry	Number In Class	Original Institution										Any UNC Institution									
		After Year 1	After Year 2	After Year 3	After Year 4	After Year 5	After Year 6	After Year 7	After Year 8	After Year 9	After Year 10	After Year 1	After Year 2	After Year 3	After Year 4	After Year 5	After Year 6	After Year 7	After Year 8	After Year 9	After Year 10
Panel A - Retention																					
1984	1339	76.4	63.7	57.8	30.6	9.9	5.5	2.8	2.2	1.6	1.2	77.7	67.0	61.5	33.7	11.7	7.1	4.1	3.0	2.3	1.8
1985	1403	77.8	64.1	60.6	33.4	11.9	6.6	3.7	1.9	1.5	1.1	80.0	69.4	66.1	38.1	14.0	7.9	4.4	2.4	1.9	1.7
1986	1655	75.7	62.3	57.6	35.5	11.5	5.1	3.3	2.6	1.9	1.5	77.9	67.3	63.4	40.4	14.2	7.1	4.4	3.4	2.4	2.1
1987	1627	78.9	65.2	62.4	39.9	12.8	5.8	2.8	1.7	1.3	1.5	81.1	69.9	67.5	44.0	15.4	7.6	4.1	2.8	2.0	2.0
1988	1830	82.8	72.5	68.1	40.7	12.1	4.6	2.6	1.4	1.0	0.7	85.5	77.9	75.0	45.7	15.0	6.0	3.3	1.8	1.6	1.1
1989	1541	84.0	72.1	67.0	39.6	13.5	5.7	3.0	2.0	1.3	1.0	87.3	78.1	74.2	45.4	16.9	7.6	4.2	2.9	1.8	1.3
1990	1774	78.7	67.2	63.1	36.7	11.8	4.9	2.3	1.7	1.1	0.6	82.0	73.3	71.0	43.2	15.1	7.0	3.3	2.3	1.6	1.1
1991	1556	80.8	65.4	60.8	35.4	12.1	6.0	3.2	2.1	1.2	.	82.9	70.8	68.1	41.6	15.4	7.2	4.4	3.0	1.7	.
1992	1576	78.7	65.1	59.3	38.6	13.9	5.5	2.7	1.5	.	.	81.9	72.4	67.6	45.0	17.2	7.2	3.6	1.9	.	.
1993	1685	78.1	62.8	57.6	36.9	13.0	4.6	2.6	.	.	.	80.6	68.4	63.6	42.1	15.7	5.8	3.6	.	.	.
1994	1551	80.1	64.8	59.3	33.8	10.4	5.0	.	.	.	.	82.2	69.1	64.3	37.7	12.1	6.1	.	.	.	.
1995	1663	79.1	66.4	61.3	34.9	12.0	.	.	.	.	.	82.0	71.8	66.9	39.1	14.0	.	.	.	.	.
1996	1684	76.1	61.8	55.1	31.7	.	.	.	.	.	.	79.6	67.5	61.0	36.4	.	.	.	.	.	.
1997	1905	78.7	65.5	58.8	.	.	.	.	.	.	.	80.6	68.9	62.5	.	.	.	.	.	.	.
1998	2126	73.3	58.4	.	.	.	.	.	.	.	.	76.5	63.7	.	.	.	.	.	.	.	.
1999	2078	73.1	.	.	.	.	.	.	.	.	.	76.3	.	.	.	.	.	.	.	.	.
Panel B - Graduation																					
1984	1339	0.0	0.0	0.5	25.2	45.3	50.3	52.6	53.5	54.1	54.4	0.0	0.0	0.5	26.0	47.6	53.0	55.6	56.8	57.6	58.3
1985	1403	0.0	0.0	0.7	25.1	45.6	51.0	53.7	55.0	55.6	56.3	0.0	0.0	0.7	26.1	49.1	55.1	58.5	60.2	61.0	61.7
1986	1655	0.0	0.0	0.5	21.0	43.9	49.9	51.9	53.1	53.9	54.3	0.0	0.0	0.5	22.1	47.4	54.1	56.8	58.4	59.5	60.2
1987	1627	0.0	0.0	0.6	21.3	47.1	53.5	56.3	57.8	58.2	58.6	0.0	0.0	0.6	22.7	50.3	57.8	61.0	63.0	63.7	64.3
1988	1830	0.0	0.0	0.5	25.4	52.0	59.7	61.7	63.0	63.6	64.0	0.0	0.0	0.5	27.3	56.7	65.7	68.3	69.7	70.4	70.9
1989	1541	0.0	0.0	0.6	25.6	51.1	58.3	60.1	61.1	61.6	61.9	0.0	0.0	0.6	27.5	55.7	64.2	66.9	68.3	68.9	69.4
1990	1774	0.0	0.1	0.5	22.9	45.7	52.8	54.9	55.9	56.4	56.8	0.0	0.1	0.5	24.6	50.4	58.9	61.9	63.2	63.9	64.4
1991	1556	0.0	0.0	0.3	22.3	44.2	51.0	53.5	54.6	55.1	.	0.0	0.0	0.3	23.7	48.8	57.5	60.3	61.4	62.3	.
1992	1576	0.0	0.0	0.3	18.4	42.4	50.9	53.4	54.2	.	.	0.0	0.0	0.3	20.2	47.3	57.7	61.0	62.2	.	.
1993	1685	0.0	0.0	0.3	18.5	41.6	48.7	50.8	.	.	.	0.0	0.0	0.3	19.7	45.6	54.2	56.7	.	.	.
1994	1551	0.0	0.0	0.5	23.1	45.6	50.4	.	.	.	.	0.0	0.0	0.5	24.2	49.0	54.4	.	.	.	.
1995	1663	0.0	0.0	0.7	23.8	44.6	.	.	.	.	.	0.0	0.0	0.7	25.2	48.0	.	.	.	.	.
1996	1684	0.0	0.0	1.0	21.3	.	.	.	.	.	.	0.0	0.0	1.0	22.9	.	.	.	.	.	.
1997	1905	0.0	0.0	0.4	.	.	.	.	.	.	.	0.0	0.0	0.5	.	.	.	.	.	.	.
1998	2126	0.0	0.0	.	.	.	.	.	.	.	.	0.0	0.0	.	.	.	.	.	.	.	.
1999	2078	0.0	.	.	.	.	.	.	.	.	.	0.0	.	.	.	.	.	.	.	.	.
Panel C - Persistence																					
1984	1339	76.4	63.7	58.3	55.8	55.3	55.8	55.4	55.7	55.6	55.6	77.7	67.0	62.1	59.7	59.3	60.1	59.7	59.7	59.9	60.0
1985	1403	77.8	64.1	61.3	58.4	57.5	57.6	57.4	56.9	57.1	57.4	80.0	69.4	66.9	64.1	63.2	63.0	62.9	62.6	62.9	63.4
1986	1655	75.7	62.3	58.1	56.5	55.5	55.0	55.2	55.6	55.8	55.8	77.9	67.3	63.9	62.5	61.6	61.2	61.1	61.8	61.9	62.2
1987	1627	78.9	65.2	63.0	61.2	59.9	59.4	59.1	59.5	59.5	60.1	81.1	69.9	68.1	66.7	65.7	65.4	65.1	65.8	65.7	66.3
1988	1830	82.8	72.5	68.6	66.1	64.0	64.3	64.3	64.4	64.6	64.7	85.5	77.9	75.5	73.1	71.6	71.6	71.6	71.5	72.0	72.1
1989	1541	84.0	72.1	67.6	65.2	64.6	64.0	63.1	63.1	62.9	62.9	87.3	78.1	74.9	72.9	72.7	71.8	71.1	71.2	70.7	70.7
1990	1774	78.7	67.2	63.6	59.6	57.5	57.7	57.2	57.6	57.6	57.4	82.0	73.4	71.5	67.8	65.4	66.0	65.2	65.5	65.5	65.5
1991	1556	80.8	65.4	61.1	57.7	56.4	57.1	56.7	56.7	56.3	.	82.9	70.8	68.4	65.4	64.2	64.7	64.7	64.3	63.9	.
1992	1576	78.7	65.1	59.6	57.0	56.3	56.4	56.1	55.7	.	.	81.9	72.4	68.0	65.2	64.5	64.9	64.6	64.1	.	.
1993	1685	78.1	62.8	57.9	55.3	54.6	53.3	53.4	.	.	.	80.6	68.4	63.9	61.8	61.2	60.0	60.2	.	.	.
1994	1551	80.1	64.8	59.8	56.9	56.0	55.4	.	.	.	.	82.2	69.1	64.8	61.9	61.1	60.5	.	.	.	.
1995	1663	79.1	66.4	62.0	58.7	56.6	.	.	.	.	.	82.0	71.8	67.6	64.3	61.9	.	.	.	.	.
1996	1684	76.1	61.8	56.1	53.0	.	.	.	.	.	.	79.6	67.5	62.0	59.3	.	.	.	.	.	.
1997	1905	78.7	65.5	59.3	.	.	.	.	.	.	.	80.6	68.9	63.0	.	.	.	.	.	.	.
1998	2126	73.3	58.4	.	.	.	.	.	.	.	.	76.5	63.7	.	.	.	.	.	.	.	.
1999	2078	73.1	.	.	.	.	.	.	.	.	.	76.3	.	.	.	.	.	.	.	.	.

Retention, Graduation and Persistence Rates of First-Time Full-Time Freshmen At U.N.C. - Greensboro  
 Group= All Students

Yr of Entry	Number In Class	Original Institution										Any UNC Institution									
		After Year 1	After Year 2	After Year 3	After Year 4	After Year 5	After Year 6	After Year 7	After Year 8	After Year 9	After Year 10	After Year 1	After Year 2	After Year 3	After Year 4	After Year 5	After Year 6	After Year 7	After Year 8	After Year 9	After Year 10
Panel A - Retention																					
1984	1231	76.8	62.1	57.0	24.0	6.2	2.0	1.5	1.3	0.7	0.7	80.3	69.6	64.9	30.1	9.7	4.0	2.5	2.3	1.8	1.6
1985	1386	77.9	63.6	58.4	25.1	7.4	3.2	1.9	1.3	0.9	0.7	82.5	71.3	67.0	31.7	11.0	5.5	3.2	2.5	1.8	1.8
1986	1491	73.9	60.9	56.4	23.6	5.8	2.7	1.8	1.1	1.3	0.5	76.9	66.7	62.8	28.7	8.9	4.6	3.1	2.2	2.5	1.3
1987	1628	78.3	66.3	60.3	25.1	7.2	3.2	1.7	1.7	1.2	0.8	82.2	73.4	68.4	31.6	11.1	6.0	4.0	3.3	2.1	1.4
1988	1715	79.7	65.9	59.2	27.1	8.1	3.8	2.3	1.5	0.9	0.6	82.6	73.8	68.2	34.4	13.1	7.3	4.7	3.4	2.0	1.7
1989	1641	78.1	63.3	58.0	28.0	7.7	3.2	2.3	1.5	1.2	0.4	82.3	70.7	67.0	35.6	11.5	6.2	4.3	3.0	2.3	1.5
1990	1498	75.7	60.9	53.4	25.2	8.2	4.1	2.5	1.3	1.2	0.7	80.9	70.4	64.8	34.1	12.7	6.8	4.3	2.6	2.2	1.3
1991	1346	78.9	62.8	58.3	29.7	8.5	3.5	1.9	1.0	0.9	.	81.9	71.4	68.2	38.2	14.0	6.8	4.2	2.2	1.9	.
1992	1509	75.9	61.1	56.1	27.6	7.8	3.8	2.3	1.1	.	.	79.7	68.8	64.6	34.5	11.5	5.8	3.8	2.4	.	.
1993	1500	75.4	60.9	53.5	31.7	8.3	3.9	1.7	.	.	.	78.2	68.3	61.6	38.4	12.7	6.7	3.3	.	.	.
1994	1404	76.0	59.3	54.5	31.6	10.3	3.8	.	.	.	.	79.1	65.9	62.3	38.0	13.7	5.9	.	.	.	.
1995	1806	71.4	58.8	52.9	30.0	7.9	.	.	.	.	.	75.6	65.7	60.5	36.8	12.1	.	.	.	.	.
1996	1552	72.2	60.4	54.6	26.4	.	.	.	.	.	.	75.6	67.6	62.7	32.7	.	.	.	.	.	.
1997	1578	73.9	60.8	56.0	.	.	.	.	.	.	.	77.1	66.2	62.9	.	.	.	.	.	.	.
1998	1796	74.0	60.1	.	.	.	.	.	.	.	.	78.4	68.3	.	.	.	.	.	.	.	.
1999	1911	73.9	.	.	.	.	.	.	.	.	.	78.6	.	.	.	.	.	.	.	.	.
Panel B - Graduation																					
1984	1231	0.0	0.0	0.4	30.2	47.6	50.4	51.2	51.7	51.8	52.1	0.1	0.2	0.6	31.9	52.1	56.1	57.8	58.6	58.8	59.5
1985	1386	0.0	0.0	0.6	31.5	47.9	51.7	53.3	53.8	54.3	54.6	0.1	0.1	0.8	33.8	53.2	58.8	61.1	62.0	62.8	63.3
1986	1491	0.0	0.0	0.5	28.8	45.3	48.2	49.3	49.9	50.3	50.6	0.0	0.0	0.6	30.4	48.8	53.0	55.0	55.9	56.6	57.2
1987	1628	0.0	0.0	0.5	31.6	48.2	52.3	53.6	54.1	54.5	55.2	0.0	0.0	0.6	34.5	53.6	58.8	61.2	62.2	63.3	64.5
1988	1715	0.0	0.0	0.5	28.7	46.2	50.2	51.8	52.5	53.4	53.6	0.0	0.0	0.5	30.8	51.5	57.4	60.2	61.6	63.1	63.3
1989	1641	0.0	0.0	0.5	27.4	46.9	50.7	51.9	52.9	53.4	54.1	0.0	0.0	0.5	29.1	52.1	57.2	59.1	60.8	61.4	62.5
1990	1498	0.0	0.1	0.4	26.0	41.3	45.5	46.8	48.1	48.5	48.9	0.0	0.1	0.4	28.8	48.3	54.8	57.0	59.1	59.8	60.5
1991	1346	0.0	0.1	0.9	26.5	45.5	50.1	51.6	53.1	53.3	.	0.0	0.1	0.9	28.1	50.6	57.7	60.1	62.5	62.8	.
1992	1509	0.0	0.0	0.3	24.1	43.7	47.4	49.5	50.4	.	.	0.0	0.0	0.3	25.7	48.2	53.7	56.9	58.1	.	.
1993	1500	0.0	0.1	0.5	19.9	42.1	46.9	48.7	.	.	.	0.0	0.1	0.5	21.7	46.8	53.5	56.1	.	.	.
1994	1404	0.0	0.0	1.1	22.0	40.5	46.6	.	.	.	.	0.0	0.0	1.1	23.4	44.5	52.1	.	.	.	.
1995	1806	0.0	0.1	0.4	20.8	40.8	.	.	.	.	.	0.0	0.1	0.4	21.9	44.7	.	.	.	.	.
1996	1552	0.0	0.0	0.4	25.1	.	.	.	.	.	.	0.0	0.0	0.4	26.7	.	.	.	.	.	.
1997	1578	0.0	0.0	0.6	.	.	.	.	.	.	.	0.0	0.0	0.6	.	.	.	.	.	.	.
1998	1796	0.0	0.0	.	.	.	.	.	.	.	.	0.0	0.0	.	.	.	.	.	.	.	.
1999	1911	0.0	.	.	.	.	.	.	.	.	.	0.0	.	.	.	.	.	.	.	.	.
Panel C - Persistence																					
1984	1231	76.8	62.1	57.4	54.3	53.8	52.5	52.6	53.0	52.6	52.8	80.3	69.8	65.6	62.1	61.7	60.1	60.3	60.8	60.6	61.1
1985	1386	77.9	63.6	59.0	56.6	55.3	54.9	55.3	55.1	55.2	55.3	82.6	71.4	67.7	65.5	64.1	64.3	64.4	64.4	64.6	65.2
1986	1491	73.9	60.9	56.9	52.4	51.0	50.8	51.1	51.0	51.6	51.2	76.9	66.7	63.4	59.1	57.7	57.5	58.1	58.1	59.1	58.6
1987	1628	78.3	66.3	60.8	56.7	55.4	55.5	55.3	55.8	55.8	56.0	82.2	73.4	68.9	66.1	64.7	64.7	65.2	65.4	65.5	65.9
1988	1715	79.7	65.9	59.7	55.8	54.3	54.0	54.2	54.1	54.3	54.2	82.6	73.8	68.7	65.2	64.6	64.7	65.0	65.1	65.1	65.0
1989	1641	78.1	63.3	58.4	55.5	54.6	53.9	54.2	54.4	54.5	54.5	82.3	70.7	67.5	64.7	63.6	63.3	63.4	63.7	63.7	63.9
1990	1498	75.7	60.9	53.8	51.1	49.5	49.6	49.3	49.5	49.7	49.7	80.9	70.4	65.2	62.9	60.9	61.6	61.3	61.7	62.0	61.8
1991	1346	78.9	62.9	59.2	56.2	54.0	53.6	53.5	54.2	54.2	.	81.9	71.5	69.1	66.3	64.6	64.5	64.3	64.6	64.7	.
1992	1509	75.9	61.1	56.5	51.7	51.6	51.2	51.8	51.6	.	.	79.7	68.8	64.9	60.2	59.6	59.5	60.6	60.5	.	.
1993	1500	75.4	61.0	54.1	51.6	50.5	50.9	50.4	.	.	.	78.2	68.4	62.1	60.1	59.5	60.2	59.5	.	.	.
1994	1404	76.0	59.3	55.6	53.6	50.9	50.4	.	.	.	.	79.1	65.9	63.4	61.4	58.3	58.0	.	.	.	.
1995	1806	71.4	58.9	53.3	50.8	48.7	.	.	.	.	.	75.6	65.8	60.9	58.7	56.8	.	.	.	.	.
1996	1552	72.2	60.4	55.0	51.5	.	.	.	.	.	.	75.6	67.6	63.1	59.5	.	.	.	.	.	.
1997	1578	73.9	60.8	56.6	.	.	.	.	.	.	.	77.1	66.2	63.5	.	.	.	.	.	.	.
1998	1796	74.0	60.1	.	.	.	.	.	.	.	.	78.4	68.3	.	.	.	.	.	.	.	.
1999	1911	73.9	.	.	.	.	.	.	.	.	.	78.6	.	.	.	.	.	.	.	.	.

Retention, Graduation and Persistence Rates of First-Time Full-Time Freshmen At U.N.C. - Pembroke  
 Group= All Students

Yr of Entry	Number In Class	Original Institution										Any UNC Institution									
		After Year 1	After Year 2	After Year 3	After Year 4	After Year 5	After Year 6	After Year 7	After Year 8	After Year 9	After Year 10	After Year 1	After Year 2	After Year 3	After Year 4	After Year 5	After Year 6	After Year 7	After Year 8	After Year 9	After Year 10
Panel A - Retention																					
1984	361	73.1	60.1	55.7	28.8	11.9	5.5	5.0	2.8	2.8	2.5	76.5	64.5	59.3	32.7	13.3	6.4	5.8	3.6	3.6	3.9
1985	365	69.0	58.4	49.0	25.8	7.7	2.2	3.6	1.9	1.9	1.4	72.3	64.9	55.3	31.0	11.2	4.7	4.7	3.3	2.7	2.2
1986	384	72.7	54.2	49.2	27.3	8.3	4.9	2.6	3.1	1.6	1.3	76.6	62.2	56.5	32.3	10.2	6.0	3.9	3.6	2.1	1.8
1987	403	77.9	63.0	56.6	28.8	9.7	5.2	4.0	3.0	2.0	0.7	79.2	66.3	60.5	33.3	11.9	7.4	5.2	3.2	2.0	1.0
1988	508	74.8	56.9	49.0	29.5	10.6	6.7	2.8	2.2	2.2	1.8	78.1	64.8	57.5	36.4	14.8	8.7	4.1	2.6	2.4	1.8
1989	457	75.3	54.5	49.9	30.0	10.7	5.9	3.7	1.8	1.1	0.9	77.9	62.4	60.0	38.9	15.5	7.4	5.5	3.1	2.4	2.0
1990	421	68.9	50.6	45.1	27.1	6.9	4.5	3.6	2.6	1.7	2.1	73.4	58.4	53.9	34.2	12.1	7.4	4.8	3.3	2.6	3.1
1991	379	74.1	54.4	47.0	26.9	7.9	4.0	3.2	3.2	1.6	.	77.3	63.9	59.1	36.9	12.9	6.9	5.3	4.2	2.4	.
1992	417	69.5	53.0	45.3	23.7	9.1	4.3	2.4	2.9	.	.	73.4	60.9	53.7	31.9	13.2	6.7	4.3	5.0	.	.
1993	422	69.7	53.1	47.4	27.5	10.0	4.3	4.0	.	.	.	73.5	60.0	54.3	33.9	13.5	5.5	4.5	.	.	.
1994	420	63.8	51.0	45.2	21.0	7.6	2.6	.	.	.	.	66.7	57.1	52.4	27.9	11.7	6.0	.	.	.	.
1995	410	71.7	48.8	44.4	21.0	8.3	.	.	.	.	.	75.9	55.4	51.2	27.3	11.7	.	.	.	.	.
1996	449	68.4	48.6	44.3	21.4	.	.	.	.	.	.	71.9	57.5	53.5	29.8	.	.	.	.	.	.
1997	480	71.0	52.7	45.8	.	.	.	.	.	.	.	72.9	60.6	54.2	.	.	.	.	.	.	.
1998	464	66.6	53.2	.	.	.	.	.	.	.	.	70.7	60.8	.	.	.	.	.	.	.	.
1999	475	67.4	.	.	.	.	.	.	.	.	.	74.1	.	.	.	.	.	.	.	.	.
Panel B - Graduation																					
1984	361	0.0	0.0	0.3	20.2	35.5	40.2	42.1	43.8	44.0	44.3	0.0	0.0	0.3	21.1	37.7	42.9	45.2	47.1	47.6	47.9
1985	365	0.0	0.0	0.8	16.7	35.1	38.1	38.6	39.5	40.0	40.5	0.0	0.0	0.8	18.4	37.8	41.9	43.8	44.7	45.8	46.6
1986	384	0.0	0.0	1.0	14.3	32.6	37.2	38.8	39.6	40.6	41.1	0.0	0.0	1.3	16.7	37.0	42.4	44.3	45.6	46.9	47.4
1987	403	0.0	0.0	1.0	20.6	40.9	43.7	46.2	46.9	47.9	48.9	0.0	0.0	1.0	21.6	42.9	45.9	49.9	51.1	52.4	53.3
1988	508	0.0	0.0	0.4	19.1	35.6	40.4	42.7	43.5	44.1	44.5	0.0	0.0	0.4	20.1	38.8	46.1	50.0	51.2	52.0	52.6
1989	457	0.0	0.0	0.2	14.2	33.5	37.6	40.0	40.9	41.6	42.2	0.0	0.0	0.2	15.1	37.6	44.2	47.3	48.4	49.0	50.1
1990	421	0.0	0.0	0.5	12.4	30.2	32.8	34.4	36.1	36.8	37.3	0.0	0.0	0.7	13.8	33.7	38.5	41.8	43.9	44.7	45.1
1991	379	0.0	0.0	0.8	15.3	33.2	36.4	38.5	39.3	40.9	.	0.0	0.0	0.8	16.9	39.8	44.6	47.8	49.3	50.9	.
1992	417	0.0	0.0	1.0	15.8	29.7	33.8	36.0	36.2	.	.	0.0	0.0	1.0	16.8	34.5	40.3	44.1	44.6	.	.
1993	422	0.0	0.0	0.7	16.8	33.9	39.6	41.5	.	.	.	0.0	0.0	0.7	18.7	37.0	45.0	47.2	.	.	.
1994	420	0.0	0.0	0.5	22.1	33.3	37.1	.	.	.	.	0.0	0.0	0.5	22.9	36.0	41.2	.	.	.	.
1995	410	0.0	0.0	0.5	19.8	33.2	.	.	.	.	.	0.0	0.0	0.5	20.2	36.6	.	.	.	.	.
1996	449	0.0	0.0	0.0	17.8	.	.	.	.	.	.	0.0	0.0	0.2	19.4	.	.	.	.	.	.
1997	480	0.0	0.0	0.8	.	.	.	.	.	.	.	0.0	0.0	0.8	.	.	.	.	.	.	.
1998	464	0.0	0.0	.	.	.	.	.	.	.	.	0.0	0.0	.	.	.	.	.	.	.	.
1999	475	0.0	.	.	.	.	.	.	.	.	.	0.0	.	.	.	.	.	.	.	.	.
Panel C - Persistence																					
1984	361	73.1	60.1	56.0	49.0	47.4	45.7	47.1	46.5	46.8	46.8	76.5	64.5	59.6	53.7	51.0	49.3	51.0	50.7	51.2	51.8
1985	365	69.0	58.4	49.9	42.5	42.7	40.3	42.2	41.4	41.9	41.9	72.3	64.9	56.2	49.3	49.0	46.6	48.5	47.9	48.5	48.8
1986	384	72.7	54.2	50.3	41.7	40.9	42.2	41.4	42.7	42.2	42.4	76.6	62.2	57.8	49.0	47.1	48.4	48.2	49.2	49.0	49.2
1987	403	77.9	63.0	57.6	49.4	50.6	48.9	50.1	49.9	49.9	49.6	79.2	66.3	61.5	54.8	54.8	53.3	55.1	54.3	54.3	54.3
1988	508	74.8	56.9	49.4	48.6	46.3	47.0	45.5	45.7	46.3	46.3	78.1	64.8	57.9	56.5	53.5	54.7	54.1	53.7	54.3	54.3
1989	457	75.3	54.5	50.1	44.2	44.2	43.5	43.8	42.7	42.7	43.1	77.9	62.4	60.2	54.0	53.2	51.6	52.7	51.4	51.4	52.1
1990	421	68.9	50.6	45.6	39.4	37.1	37.3	38.0	38.7	38.5	39.4	73.4	58.4	54.6	48.0	45.8	45.8	46.6	47.3	47.3	48.2
1991	379	74.1	54.4	47.8	42.2	41.2	40.4	41.7	42.5	42.5	.	77.3	63.9	59.9	53.8	52.8	51.5	53.0	53.6	53.3	.
1992	417	69.5	53.0	46.3	39.6	38.8	38.1	38.4	39.1	.	.	73.4	60.9	54.7	48.7	47.7	47.0	48.4	49.6	.	.
1993	422	69.7	53.1	48.1	44.3	43.8	43.8	45.5	.	.	.	73.5	60.0	55.0	52.6	50.5	50.5	51.7	.	.	.
1994	420	63.8	51.0	45.7	43.1	41.0	39.8	.	.	.	.	66.7	57.1	52.9	50.7	47.6	47.1	.	.	.	.
1995	410	71.7	48.8	44.9	40.7	41.5	.	.	.	.	.	75.9	55.4	51.7	47.6	48.3	.	.	.	.	.
1996	449	68.4	48.6	44.3	39.2	.	.	.	.	.	.	71.9	57.5	53.7	49.2	.	.	.	.	.	.
1997	480	71.0	52.7	46.7	.	.	.	.	.	.	.	72.9	60.6	55.0	.	.	.	.	.	.	.
1998	464	66.6	53.2	.	.	.	.	.	.	.	.	70.7	60.8	.	.	.	.	.	.	.	.
1999	475	67.4	.	.	.	.	.	.	.	.	.	74.1	.	.	.	.	.	.	.	.	.

Retention, Graduation and Persistence Rates of First-Time Full-Time Freshmen At U.N.C. - Wilmington  
 Group= All Students

Yr of Entry	Number In Class	Original Institution										Any UNC Institution									
		After Year 1	After Year 2	After Year 3	After Year 4	After Year 5	After Year 6	After Year 7	After Year 8	After Year 9	After Year 10	After Year 1	After Year 2	After Year 3	After Year 4	After Year 5	After Year 6	After Year 7	After Year 8	After Year 9	After Year 10
Panel A - Retention																					
1984	1093	70.7	56.5	50.0	27.8	8.1	3.9	2.4	1.6	1.1	1.0	74.7	64.5	59.7	36.3	13.1	6.6	4.8	2.8	2.2	1.6
1985	1212	70.5	56.8	50.7	26.4	7.4	3.0	1.8	0.8	0.7	0.3	75.2	66.7	62.7	35.5	12.3	6.4	4.8	2.9	2.6	1.7
1986	1270	73.2	59.1	52.4	28.8	9.9	5.2	2.5	2.3	0.9	0.8	77.2	67.1	61.7	36.9	13.5	7.7	4.1	3.8	2.0	1.4
1987	1610	73.0	58.9	53.2	28.9	8.0	4.2	2.5	1.3	0.7	0.6	76.8	68.0	63.5	36.9	12.3	7.0	4.7	2.7	1.7	1.2
1988	1252	78.2	66.4	60.8	33.5	8.2	2.6	1.7	1.0	0.7	0.6	81.3	72.8	68.6	40.8	12.5	5.2	3.8	2.0	1.6	1.1
1989	1503	75.5	62.5	56.2	30.1	8.1	2.6	1.7	0.8	0.8	0.5	80.3	72.7	67.8	39.1	12.1	5.1	3.4	2.0	1.5	0.7
1990	1115	77.3	67.7	63.0	31.0	8.3	3.0	2.0	1.3	0.7	0.5	81.7	76.3	73.0	39.1	12.7	5.8	3.7	2.4	1.2	0.8
1991	1549	77.7	65.7	60.1	32.3	8.3	3.7	2.0	1.5	0.8	.	81.7	73.0	68.8	39.6	11.6	5.5	3.4	2.4	1.4	.
1992	1225	77.0	63.0	58.2	29.1	6.0	3.5	1.7	0.9	.	.	82.4	73.8	69.7	36.5	8.8	5.5	3.1	1.6	.	.
1993	1442	78.4	66.4	62.2	29.8	8.3	3.3	1.9	.	.	.	83.1	74.4	71.4	36.5	12.4	6.0	3.5	.	.	.
1994	1294	79.5	67.3	63.1	27.8	5.5	2.9	.	.	.	.	84.2	75.6	70.9	33.9	8.7	4.9	.	.	.	.
1995	1371	77.8	66.3	65.0	28.2	6.3	.	.	.	.	.	83.3	75.6	74.1	34.9	9.6	.	.	.	.	.
1996	1620	79.6	68.4	64.3	24.9	.	.	.	.	.	.	83.6	76.4	73.6	32.2	.	.	.	.	.	.
1997	1352	78.3	67.2	62.9	.	.	.	.	.	.	.	83.1	76.3	72.8	.	.	.	.	.	.	.
1998	1683	80.0	68.8	.	.	.	.	.	.	.	.	84.1	76.1	.	.	.	.	.	.	.	.
1999	1650	79.8	.	.	.	.	.	.	.	.	.	84.1	.	.	.	.	.	.	.	.	.
Panel B - Graduation																					
1984	1093	0.0	0.0	0.1	19.5	38.1	42.7	45.0	46.0	46.8	47.1	0.1	0.1	0.3	21.4	43.5	50.2	53.2	54.8	56.1	56.6
1985	1212	0.0	0.0	0.2	22.9	40.9	44.6	46.5	47.4	47.6	47.8	0.0	0.0	0.2	25.1	47.4	53.1	55.8	57.7	58.5	59.2
1986	1270	0.0	0.0	0.5	22.0	40.8	46.4	49.1	50.0	50.9	51.4	0.0	0.0	0.5	23.5	46.3	53.7	57.2	58.5	59.7	60.4
1987	1610	0.0	0.0	0.2	21.2	42.4	47.3	49.2	50.2	50.6	51.0	0.1	0.1	0.4	23.1	48.1	54.7	57.5	59.3	60.1	60.7
1988	1252	0.0	0.0	0.3	25.6	50.2	55.4	56.9	57.5	58.0	58.3	0.0	0.0	0.3	27.2	54.6	61.7	64.1	65.5	66.5	67.1
1989	1503	0.0	0.0	0.5	24.7	47.1	51.5	53.2	54.0	54.4	54.7	0.0	0.0	0.5	26.7	54.0	60.3	62.8	64.1	64.8	65.4
1990	1115	0.0	0.0	0.4	29.3	51.5	57.0	58.7	59.4	59.8	60.1	0.1	0.1	0.6	31.6	57.4	64.8	67.5	68.9	69.8	70.2
1991	1549	0.0	0.0	0.5	25.0	49.6	53.9	55.7	56.6	57.4	.	0.0	0.0	0.5	26.4	54.7	61.0	63.3	64.6	65.8	.
1992	1225	0.0	0.0	0.4	26.2	49.2	52.4	54.4	55.4	.	.	0.0	0.0	0.5	29.7	57.1	61.7	64.4	66.0	.	.
1993	1442	0.0	0.0	0.3	28.9	50.8	55.8	57.6	.	.	.	0.0	0.0	0.3	31.0	56.2	63.1	65.5	.	.	.
1994	1294	0.0	0.0	0.6	34.3	56.6	59.8	.	.	.	.	0.0	0.0	0.7	36.6	61.9	66.2	.	.	.	.
1995	1371	0.0	0.1	0.7	33.8	54.6	.	.	.	.	.	0.0	0.1	0.9	36.8	61.1	.	.	.	.	.
1996	1620	0.0	0.0	0.8	37.1	.	.	.	.	.	.	0.0	0.0	0.8	39.6	.	.	.	.	.	.
1997	1352	0.0	0.0	0.7	.	.	.	.	.	.	.	0.0	0.0	0.7	.	.	.	.	.	.	.
1998	1683	0.0	0.0	.	.	.	.	.	.	.	.	0.1	0.1	.	.	.	.	.	.	.	.
1999	1650	0.0	.	.	.	.	.	.	.	.	.	0.1	.	.	.	.	.	.	.	.	.
Panel C - Persistence																					
1984	1093	70.7	56.5	50.1	47.3	46.2	46.7	47.4	47.6	47.8	48.1	74.8	64.6	59.9	57.7	56.6	56.8	58.0	57.6	58.3	58.3
1985	1212	70.5	56.8	50.9	49.3	48.3	47.5	48.3	48.3	48.3	48.1	75.2	66.7	62.9	60.6	59.7	59.5	60.6	60.6	61.1	61.0
1986	1270	73.2	59.1	52.9	50.8	50.7	51.6	51.7	52.3	51.8	52.2	77.2	67.1	62.1	60.5	59.8	61.4	61.3	62.3	61.7	61.8
1987	1610	73.0	58.9	53.5	50.1	50.3	51.6	51.7	51.5	51.4	51.6	77.0	68.1	63.9	60.0	60.4	61.7	62.1	62.0	61.8	62.0
1988	1252	78.2	66.4	61.1	59.1	58.5	58.0	58.5	58.5	58.7	58.9	81.3	72.8	68.9	68.0	67.1	66.9	67.9	67.5	68.1	68.2
1989	1503	75.5	62.5	56.7	54.8	55.2	54.1	54.8	54.8	55.2	55.2	80.3	72.7	68.3	65.9	66.1	65.5	66.2	66.1	66.3	66.1
1990	1115	77.3	67.7	63.5	60.4	59.8	60.0	60.6	60.6	60.5	60.6	81.8	76.4	73.6	70.7	70.1	70.6	71.2	71.3	70.9	71.0
1991	1549	77.7	65.7	60.6	57.3	57.9	57.6	57.7	58.1	58.2	.	81.7	73.0	69.3	66.0	66.2	66.5	66.6	67.0	67.1	.
1992	1225	77.0	63.0	58.6	55.3	55.2	55.9	56.2	56.3	.	.	82.4	73.8	70.2	66.2	66.0	67.2	67.5	67.5	.	.
1993	1442	78.4	66.4	62.5	58.7	59.1	59.1	59.5	.	.	.	83.1	74.4	71.8	67.5	68.6	69.1	69.1	.	.	.
1994	1294	79.5	67.3	63.7	62.1	62.1	62.8	.	.	.	.	84.2	75.6	71.6	70.6	70.6	71.2	.	.	.	.
1995	1371	77.8	66.4	65.6	61.9	60.9	.	.	.	.	.	83.3	75.7	75.0	71.7	70.7	.	.	.	.	.
1996	1620	79.6	68.4	65.1	62.0	.	.	.	.	.	.	83.6	76.4	74.4	71.9	.	.	.	.	.	.
1997	1352	78.3	67.2	63.6	.	.	.	.	.	.	.	83.1	76.3	73.5	.	.	.	.	.	.	.
1998	1683	80.0	68.8	.	.	.	.	.	.	.	.	84.1	76.2	.	.	.	.	.	.	.	.
1999	1650	79.8	.	.	.	.	.	.	.	.	.	84.2	.	.	.	.	.	.	.	.	.

Retention, Graduation and Persistence Rates of First-Time Full-Time Freshmen At Western Carolina University  
 Group= All Students

Yr of Entry	Number In Class	Original Institution										Any UNC Institution									
		After Year 1	After Year 2	After Year 3	After Year 4	After Year 5	After Year 6	After Year 7	After Year 8	After Year 9	After Year 10	After Year 1	After Year 2	After Year 3	After Year 4	After Year 5	After Year 6	After Year 7	After Year 8	After Year 9	After Year 10
Panel A - Retention																					
1984	1165	67.0	53.3	48.3	22.2	6.2	2.6	1.6	1.4	0.9	0.5	71.0	59.6	55.1	28.0	9.4	5.1	3.9	3.1	2.6	1.8
1985	1008	71.3	57.9	53.1	25.0	7.0	3.5	1.8	1.0	0.9	0.8	74.8	63.9	59.4	29.7	10.1	5.2	2.9	1.8	1.7	1.7
1986	1014	69.4	56.4	50.9	24.9	6.0	3.2	2.2	1.1	0.5	0.4	72.8	61.7	56.5	30.0	9.1	5.7	3.7	2.5	1.4	0.9
1987	1060	71.6	55.9	51.5	26.7	7.6	3.4	1.7	1.2	0.4	0.4	76.3	64.2	59.4	33.4	11.9	6.1	4.2	2.6	1.5	1.7
1988	1116	72.0	58.2	50.6	30.6	6.5	3.2	1.5	1.3	0.4	0.7	77.6	67.5	61.1	40.1	11.3	5.5	2.8	2.2	1.0	1.0
1989	1280	72.3	59.1	54.3	30.4	6.6	1.7	1.3	0.7	0.4	0.5	79.1	68.4	64.3	38.5	10.8	4.2	3.3	2.3	1.2	1.3
1990	993	72.2	59.3	54.6	34.0	9.1	3.6	2.3	1.1	0.4	0.5	77.8	69.3	64.0	42.3	13.9	6.0	3.5	2.2	1.3	1.7
1991	1013	71.4	58.8	52.1	29.2	6.4	1.7	1.1	0.7	0.4	.	75.9	66.9	61.2	35.9	10.8	4.3	2.6	1.6	0.7	.
1992	1064	72.1	60.3	54.6	33.1	7.0	2.6	1.3	0.6	.	.	76.5	69.0	63.1	40.1	11.2	5.2	2.6	2.0	.	.
1993	1052	73.8	60.0	52.6	29.4	7.4	2.4	1.6	.	.	.	78.6	69.0	62.5	38.4	12.3	5.4	3.4	.	.	.
1994	1242	70.4	54.5	48.8	24.6	7.2	3.2	.	.	.	.	74.5	62.6	57.0	32.4	12.3	5.8	.	.	.	.
1995	1156	69.0	57.4	51.6	27.1	5.7	.	.	.	.	.	73.4	65.6	60.2	34.3	9.3	.	.	.	.	.
1996	1177	67.0	53.4	50.1	27.0	.	.	.	.	.	.	72.9	63.3	61.0	36.1	.	.	.	.	.	.
1997	1225	67.5	57.0	51.4	.	.	.	.	.	.	.	72.5	65.5	60.2	.	.	.	.	.	.	.
1998	1098	69.5	55.5	.	.	.	.	.	.	.	.	72.7	62.9	.	.	.	.	.	.	.	.
1999	1151	71.1	.	.	.	.	.	.	.	.	.	75.2	.	.	.	.	.	.	.	.	.
Panel B - Graduation																					
1984	1165	0.0	0.1	0.2	23.5	38.7	42.7	43.7	44.3	44.8	45.2	0.0	0.1	0.2	24.5	42.1	47.3	48.7	49.5	50.7	51.4
1985	1008	0.0	0.0	0.5	25.0	42.5	46.4	48.3	48.9	49.5	49.7	0.0	0.0	0.5	26.2	45.7	50.7	53.3	54.1	54.8	55.0
1986	1014	0.0	0.0	0.3	23.8	42.2	46.3	47.5	48.8	49.4	49.6	0.0	0.0	0.3	24.8	45.0	50.2	52.0	53.5	54.4	54.9
1987	1060	0.0	0.0	0.8	23.5	42.8	47.5	49.2	49.9	50.4	50.6	0.0	0.0	0.8	24.4	46.9	52.9	55.5	56.9	57.7	58.1
1988	1116	0.0	0.0	0.9	19.2	42.8	47.0	48.4	49.0	49.6	49.8	0.0	0.0	0.9	20.1	48.7	55.4	57.8	59.1	59.9	60.3
1989	1280	0.0	0.0	0.2	22.5	45.6	50.3	51.1	51.4	52.0	52.2	0.0	0.0	0.2	24.4	51.1	57.7	59.3	60.2	61.6	62.0
1990	993	0.0	0.0	0.1	18.0	42.5	48.0	49.3	50.9	51.8	52.0	0.0	0.0	0.2	19.0	47.6	55.0	57.6	59.5	60.7	61.2
1991	1013	0.0	0.0	0.1	20.7	42.7	47.5	48.6	49.0	49.4	.	0.0	0.0	0.2	22.4	47.2	53.9	55.7	56.6	57.3	.
1992	1064	0.0	0.0	0.7	19.5	45.0	49.2	50.5	51.2	.	.	0.0	0.0	0.8	20.9	49.4	55.5	57.7	58.7	.	.
1993	1052	0.0	0.0	0.6	21.4	42.1	47.1	48.7	.	.	.	0.0	0.0	0.6	23.3	48.2	55.2	58.2	.	.	.
1994	1242	0.0	0.0	0.6	22.1	39.5	44.6	.	.	.	.	0.0	0.0	0.6	23.0	43.6	50.6	.	.	.	.
1995	1156	0.0	0.0	0.6	22.4	43.7	.	.	.	.	.	0.0	0.0	0.8	24.3	48.6	.	.	.	.	.
1996	1177	0.0	0.0	0.5	21.9	.	.	.	.	.	.	0.0	0.0	0.6	24.1	.	.	.	.	.	.
1997	1225	0.0	0.0	0.7	.	.	.	.	.	.	.	0.0	0.0	0.7	.	.	.	.	.	.	.
1998	1098	0.0	0.0	.	.	.	.	.	.	.	.	0.0	0.0	.	.	.	.	.	.	.	.
1999	1151	0.1	.	.	.	.	.	.	.	.	.	0.1	.	.	.	.	.	.	.	.	.
Panel C - Persistence																					
1984	1165	67.0	53.4	48.5	45.8	44.9	45.3	45.3	45.7	45.8	45.8	71.0	59.7	55.3	52.5	51.6	52.4	52.5	52.6	53.3	53.2
1985	1008	71.3	57.9	53.6	50.0	49.5	49.9	50.1	49.9	50.4	50.5	74.8	63.9	59.9	55.9	55.9	56.2	55.9	56.4	56.6	56.6
1986	1014	69.4	56.4	51.2	48.6	48.2	49.4	49.7	49.9	49.9	50.0	72.8	61.7	56.8	54.7	54.0	55.9	55.7	55.9	55.8	55.8
1987	1060	71.6	55.9	52.3	50.2	50.5	50.8	50.9	51.1	50.8	50.9	76.3	64.2	60.2	57.8	58.8	59.1	59.6	59.5	59.2	59.8
1988	1116	72.0	58.2	51.5	49.7	49.4	50.3	49.9	50.3	50.1	50.5	77.6	67.5	62.0	60.2	60.0	60.8	60.6	61.3	60.9	61.3
1989	1280	72.3	59.1	54.5	52.9	52.3	52.0	52.3	52.1	52.3	52.7	79.1	68.4	64.5	62.9	61.9	61.9	62.6	62.5	62.7	63.3
1990	993	72.2	59.3	54.7	52.1	51.6	51.7	51.7	52.0	52.2	52.5	77.8	69.3	64.2	61.3	61.5	61.0	61.1	61.7	62.0	62.9
1991	1013	71.4	58.8	52.2	50.0	49.2	49.2	49.7	49.7	49.8	.	75.9	66.9	61.4	58.3	57.9	58.2	58.2	58.1	57.9	.
1992	1064	72.1	60.3	55.3	52.5	52.1	51.8	51.8	51.8	.	.	76.5	69.0	63.8	61.0	60.6	60.6	60.3	60.7	.	.
1993	1052	73.8	60.0	53.1	50.8	49.5	49.4	50.3	.	.	.	78.6	69.0	63.0	61.7	60.5	60.6	61.6	.	.	.
1994	1242	70.4	54.5	49.4	46.7	46.8	47.8	.	.	.	.	74.5	62.6	57.6	55.4	55.9	56.4	.	.	.	.
1995	1156	69.0	57.4	52.2	49.5	49.4	.	.	.	.	.	73.4	65.6	61.0	58.6	57.9	.	.	.	.	.
1996	1177	67.0	53.4	50.6	48.9	.	.	.	.	.	.	72.9	63.3	61.6	60.2	.	.	.	.	.	.
1997	1225	67.5	57.0	52.1	.	.	.	.	.	.	.	72.5	65.5	60.9	.	.	.	.	.	.	.
1998	1098	69.5	55.5	.	.	.	.	.	.	.	.	72.7	62.9	.	.	.	.	.	.	.	.
1999	1151	71.2	.	.	.	.	.	.	.	.	.	75.2	.	.	.	.	.	.	.	.	.

Retention, Graduation and Persistence Rates of First-Time Full-Time Freshmen At Winston-Salem State University  
 Group= All Students

Yr of Entry	Number In Class	Original Institution										Any UNC Institution									
		After Year 1	After Year 2	After Year 3	After Year 4	After Year 5	After Year 6	After Year 7	After Year 8	After Year 9	After Year 10	After Year 1	After Year 2	After Year 3	After Year 4	After Year 5	After Year 6	After Year 7	After Year 8	After Year 9	After Year 10
Panel A - Retention																					
1984	530	66.2	50.6	44.7	32.3	12.1	5.8	2.5	1.3	1.1	0.9	68.9	54.2	47.4	34.5	13.0	6.8	3.4	2.8	2.3	1.5
1985	547	66.9	51.9	45.7	32.4	15.0	5.5	3.1	2.2	2.0	0.9	68.9	55.4	48.6	34.4	16.1	6.8	4.0	3.3	2.4	2.0
1986	530	65.5	55.3	47.9	31.3	15.8	7.2	4.0	2.6	1.9	1.1	69.1	59.8	51.5	34.5	18.3	8.7	4.7	3.2	2.5	1.7
1987	419	78.3	60.6	51.8	37.2	13.8	8.8	6.2	2.1	1.9	1.4	80.9	63.5	56.3	41.1	16.5	11.2	7.6	3.1	2.6	2.4
1988	442	69.7	57.9	49.5	34.4	12.0	5.2	3.2	1.6	1.6	1.4	72.6	62.7	54.8	39.1	15.2	7.7	5.2	2.7	2.7	2.3
1989	419	67.8	53.2	48.9	32.9	13.4	7.6	3.8	1.7	0.7	0.7	73.0	58.5	54.2	38.4	18.1	9.3	4.5	3.8	1.7	1.4
1990	375	70.7	59.2	50.1	28.3	10.4	4.3	1.1	1.1	1.6	0.8	74.9	65.1	55.2	33.3	14.1	8.0	4.0	2.7	2.9	2.1
1991	431	67.1	58.5	52.4	32.9	10.9	4.9	3.0	0.7	0.9	.	72.4	65.9	60.1	38.1	13.0	6.5	4.4	2.3	1.4	.
1992	391	75.7	64.7	58.8	33.2	14.1	4.6	2.8	1.5	.	.	78.3	68.5	62.9	36.6	17.4	8.4	5.4	4.6	.	.
1993	369	72.6	54.2	49.3	24.7	8.1	4.1	2.2	.	.	.	76.7	60.4	55.3	30.4	11.7	5.7	3.5	.	.	.
1994	328	71.6	57.6	53.0	24.7	7.3	2.4	.	.	.	.	74.4	63.4	58.5	30.5	11.3	4.6	.	.	.	.
1995	446	74.4	64.8	58.1	28.0	8.3	.	.	.	.	.	76.7	70.2	63.5	32.5	10.5	.	.	.	.	.
1996	480	74.8	55.8	51.0	30.4	.	.	.	.	.	.	79.0	63.3	58.1	36.9	.	.	.	.	.	.
1997	485	68.0	60.6	57.5	.	.	.	.	.	.	.	72.4	64.9	61.4	.	.	.	.	.	.	.
1998	524	72.9	63.0	.	.	.	.	.	.	.	.	76.0	67.2	.	.	.	.	.	.	.	.
1999	476	71.8	.	.	.	.	.	.	.	.	.	75.8	.	.	.	.	.	.	.	.	.
Panel B - Graduation																					
1984	530	0.0	0.0	0.0	7.2	22.8	28.7	30.4	31.1	31.3	31.5	0.0	0.2	0.2	7.5	24.2	30.2	32.1	33.0	33.2	33.6
1985	547	0.0	0.0	0.4	9.1	23.8	30.9	32.9	33.8	34.6	34.7	0.0	0.0	0.4	9.3	24.7	32.0	34.2	35.1	36.0	36.2
1986	530	0.0	0.0	0.0	8.5	23.6	30.8	33.8	35.5	36.4	36.8	0.0	0.0	0.0	8.9	24.9	32.8	36.2	38.1	39.2	39.6
1987	419	0.0	0.0	0.2	11.0	30.3	38.2	40.8	41.5	42.2	42.7	0.0	0.0	0.2	11.7	31.5	40.1	43.0	43.7	44.6	45.3
1988	442	0.0	0.0	0.5	9.7	30.1	36.4	38.7	40.0	40.5	40.7	0.0	0.0	0.5	10.0	31.2	38.2	41.2	43.2	44.1	44.6
1989	419	0.0	0.0	0.0	11.7	27.4	32.7	34.4	36.5	37.7	37.7	0.0	0.0	0.0	11.7	28.6	35.6	37.9	40.6	42.0	42.2
1990	375	0.0	0.0	0.0	17.6	33.1	38.4	41.1	41.1	41.3	41.6	0.0	0.0	0.3	18.4	34.4	41.1	44.3	44.8	45.1	45.3
1991	431	0.0	0.0	0.0	13.7	31.1	37.6	39.2	40.1	40.6	.	0.0	0.0	0.0	15.5	34.3	41.5	43.9	44.8	45.7	.
1992	391	0.0	0.0	0.3	21.0	39.6	47.8	48.8	49.9	.	.	0.0	0.0	0.3	21.5	41.2	49.4	50.4	51.7	.	.
1993	369	0.0	0.0	0.0	21.1	33.1	36.9	38.8	.	.	.	0.0	0.0	0.0	21.4	35.0	40.9	43.4	.	.	.
1994	328	0.0	0.0	0.3	24.7	40.2	44.5	.	.	.	.	0.0	0.0	0.3	24.7	41.8	47.6	.	.	.	.
1995	446	0.0	0.0	0.2	27.4	46.2	.	.	.	.	.	0.0	0.0	0.2	28.0	48.9	.	.	.	.	.
1996	480	0.0	0.0	0.4	19.8	.	.	.	.	.	.	0.0	0.0	0.4	20.6	.	.	.	.	.	.
1997	485	0.0	0.0	0.2	.	.	.	.	.	.	.	0.0	0.0	0.2	.	.	.	.	.	.	.
1998	524	0.0	0.0	.	.	.	.	.	.	.	.	0.0	0.0	.	.	.	.	.	.	.	.
1999	476	0.0	.	.	.	.	.	.	.	.	.	0.0	.	.	.	.	.	.	.	.	.
Panel C - Persistence																					
1984	530	66.2	50.6	44.7	39.4	34.9	34.5	32.8	32.5	32.5	32.5	68.9	54.3	47.5	42.1	37.2	37.0	35.5	35.8	35.5	35.1
1985	547	66.9	51.9	46.1	41.5	38.8	36.4	36.0	36.0	36.6	35.6	68.9	55.4	49.0	43.7	40.8	38.8	38.4	38.4	38.4	38.2
1986	530	65.5	55.3	47.9	39.8	39.4	37.9	37.7	38.1	38.3	37.9	69.1	59.8	51.5	43.4	43.2	41.5	40.9	41.3	41.7	41.3
1987	419	78.3	60.6	52.0	48.2	44.2	47.0	47.0	43.7	44.2	44.2	80.9	63.5	56.6	52.7	48.0	51.3	50.6	46.8	47.3	47.7
1988	442	69.7	57.9	50.0	44.1	42.1	41.6	41.9	41.6	42.1	42.1	72.6	62.7	55.2	49.1	46.4	45.9	46.4	45.9	46.8	46.8
1989	419	67.8	53.2	48.9	44.6	40.8	40.3	38.2	38.2	38.4	38.4	73.0	58.5	54.2	50.1	46.8	44.9	42.5	44.4	43.7	43.7
1990	375	70.7	59.2	50.1	45.9	43.5	42.7	42.1	42.1	42.9	42.4	74.9	65.1	55.5	51.7	48.5	49.1	48.3	47.5	48.0	47.5
1991	431	67.1	58.5	52.4	46.6	42.0	42.5	42.2	40.8	41.5	.	72.4	65.9	60.1	53.6	47.3	48.0	48.3	47.1	47.1	.
1992	391	75.7	64.7	59.1	54.2	53.7	52.4	51.7	51.4	.	.	78.3	68.5	63.2	58.1	58.6	57.8	55.8	56.3	.	.
1993	369	72.6	54.2	49.3	45.8	41.2	40.9	40.9	.	.	.	76.7	60.4	55.3	51.8	46.6	46.6	46.9	.	.	.
1994	328	71.6	57.6	53.4	49.4	47.6	47.0	.	.	.	.	74.4	63.4	58.8	55.2	53.0	52.1	.	.	.	.
1995	446	74.4	64.8	58.3	55.4	54.5	.	.	.	.	.	76.7	70.2	63.7	60.5	59.4	.	.	.	.	.
1996	480	74.8	55.8	51.5	50.2	.	.	.	.	.	.	79.0	63.3	58.5	57.5	.	.	.	.	.	.
1997	485	68.0	60.6	57.7	.	.	.	.	.	.	.	72.4	64.9	61.6	.	.	.	.	.	.	.
1998	524	72.9	63.0	.	.	.	.	.	.	.	.	76.0	67.2	.	.	.	.	.	.	.	.
1999	476	71.8	.	.	.	.	.	.	.	.	.	75.8	.	.	.	.	.	.	.	.	.